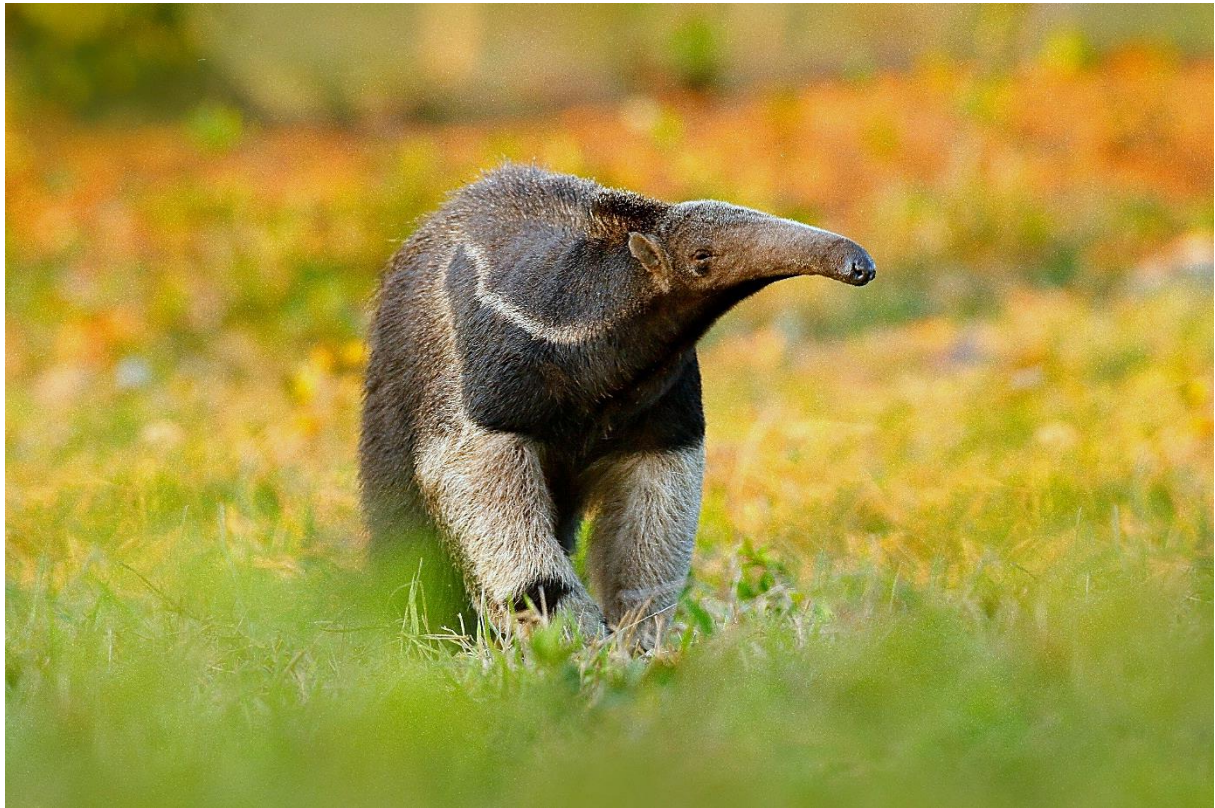


# Brazil - Giant Anteaters in the Pantanal

## Naturetrek Itinerary



Giant Anteater (*Myrmecophaga tridactyla*)

### Outline Itinerary

<b>Day 1</b>	Fly Cuiaba; transfer Piuval Lodge, Giant Anteater excursion.
<b>Day 2</b>	Morning and afternoon wildlife excursions focusing on Giant Anteater.
<b>Day 3</b>	Giant Anteater search, lunch; transfer Pouso Alegre with group

### Summary

The iconic Giant Anteater – the largest of the living anteater species measuring lengths of up to four feet and weighing up to 50kg with an amazing 60cm tongue. Scientists estimate that there are only around 5,000 individuals left in the wild and this short extension aims to give you an extra chance during your Pantanal visit to see this wonderful animal.

Before your main group tour you can focus your attention on finding Giant Anteater, staying at Piuval Lodge in the heart of an area which has had great recent success with sightings. Early morning and evening sessions will see you span out from here in search of Anteaters and with expert guidance we can give you the best chance of success as well as enjoying a whole host of other wildlife. Our base will have lovely grounds, a swimming pool, great food and Wi-Fi providing a perfect place to relax between morning and late afternoon searches. The Caipirinha will be very good here too!

## Itinerary

*Please note that the itinerary below offers our planned programme of excursions. However, adverse weather & other local considerations can necessitate some re-ordering of the programme during the course of the tour, though this will always be done to maximise best use of the time and weather conditions available. This itinerary document is intended to give some further background of what to expect and look out for and your guide will fill you in day to day on specific timings. This below outlines how this will work after your main tour as this is the most popular way of doing it and limits the cost with just one private transfer required. If you wished though to carry this out beforehand, you can do.*

**Please note**, we recommend doing this extension before your main tour in the Pantanal, giving you a chance to unwind from the international flight and to have a more relaxed day when met by the group. However, there is the option for a post-tour extension too.

### Day 1

### Arrive Cuiaba; Transfer to Lodge

Upon landing in Cuiaba late morning, you will be met by a Naturetrek representative and transferred to Piuval Lodge (via a stop for an early lunch) to relax.

The lodge lies off the Transpantaniera road and we will be passing the end of the driveway as we travel to the airport. After passing along the 3km driveway we will settle into the lodge. We will enjoy some birding around the lodge with a wealth of species to enjoy, making an effort to find the White-fronted Woodpecker (*Melanerpes cactorum*), a species not easily found at other locations along the Transpantaneira. In the late afternoon we will head out to try and find Giant Anteater.



Giant Anteater (*Myrmecophaga tridactyla*)

The general approach to finding the Giant Anteaters will be to drive down the Lodge's 3km driveways which often produces the best results. We will also cover about 1-5 km of the main Transpantaneira. This whole area is superb Giant Anteater habitat and we will stop and start and scan the area. If an animal is sighted, we may walk 400-500m to get a closer views. As darkness falls, we will return to the hotel to enjoy a tasty dinner and relax.

### Day 2

### Giant Anteater Excursions/Wildlife Activities

Today we will enjoy morning and afternoon excursions to find Giant Anteaters or a wildlife activity with your expert guide. Our guides know the very best areas to watch for them and will be reacting to recent sightings and news on their whereabouts. Time will be spent scanning the open areas and looking for movement in the long grasses and termite dotted cerrado that surround the lodge here.



We will head out very early, before breakfast to try to find Giant Anteater in the surrounding habitat before returning to the lodge for breakfast. After refueling at breakfast we will continue to enjoy the lodge grounds with some light birding and searching for wildlife. Beautiful Hyacinth Macaws are resident here and breed



Giant Anteater (*Myrmecophaga tridactyla*)

nearby and the water bodies nearby the grounds of course will be holding the by now familiar Yacare Caiman and Capybara with Wattled Jacanas, Cocoi, Rufescent Tiger and Capped Heron and Sunbittern just some of the species that may be around. Fruiting Mango trees may hold Yellow-chevrons and White-eyed Parakeets, Scaly-headed Parrot and Turquoise-fronted Amazon to name but a few with the beautiful Orange-backed Troupial and Toco Toucan other delights.

After lunch there is time to relax around the lodge before another search for Anteaters or undertaking an alternative wildlife activity in the afternoon and into the evening. We will head out in our vehicle and take walks into the surrounding habitat when needed, stopping and scanning the vast, termite laden grasslands for any movement. As well as Giant Anteater, other mammals we may encounter are Nine-banded Armadillo and possibly Southern Tamandua with Crab-eating Fox also possible. After an extensive search of the area we will return to our lodge to overnight.

## Day 3 Wildlife Activities, transfer to São Paulo/meet group tour

Today you will head out again in the early morning for a wildlife activity, this being dependant on the successes from the previous few days. After breakfast there is a chance to relax or bird the grounds before meeting the main group tour, where you will then transfer down to Pouso Alegre lodge.

## Un-guided Extension Option

You could of course stay at Piuval Lodge on an un-guided basis. There are extensive trails here to walk, a lot of wildlife to find and enjoy and it is an excellent place to just relax and unwind by the swimming pool surrounded by great habitat and abundant wildlife. If you did choose to stay on an unguided basis, all food and the transfers would be included, and it would also include one daily tour (max 2 hrs) with a Portuguese speaking guide or staff member. The visits or tours will be programmed according to availability and weather conditions. All tours are shared with other guests and bookable once at the lodge. Extra activities would be at extra cost. Activities include: Dawn safari, Night safari, Photo safari, Ecological trail walks, Horse riding.

## Cost

The cost will depend on the number of people in the group who book the extension and lodge availability. We will quote and run the extension on a private basis and if more people wish to do the same extension the cost is then lowered. Please enquire and we can provide a cost.

## Included in the Cost

- Private, English-speaking specialist anteater guide
- Private car throughout
- Accommodation
- All meals and excursions as noted (all meals until departure from the lodge on the final day)
- Unlimited mineral water from large coolers, but bring your own refillable water bottles. We suggest that each person bring a 1.5-litre bottle.

## Additional Expenditure

Please note that drinks, tips, souvenirs are not included in the cost of your extension. The Real is the preferred form of payment; with the hotels accepting credit/debit cards for payment, provided they are permitted to be used overseas.

## Time to Visit

From June through to early November sees the best chance of a Giant Anteater encounter in this area. This is the dry season, providing the best chance to find them in the day time, emerging to feed in the cool, dry evenings and mornings.

## Accommodation

During this extension you will be staying in the heart of Giant Anteater habitat, at the Pousada Piuval Lodge, depending on availability. This lodge has access to Wi-Fi, air conditioning, a swimming pool and are set in fantastic wildlife habitat.



Piuval Lodge