

# Go Slow in Mallorca

## Naturetrek Tour Itinerary

---

### Outline itinerary

- Day 1** Fly Palma; transfer Puerto Pollensa
- 
- Day 2/7** Excursions to the Boquer Valley, S'Albufera Marsh, Tramuntana Mountains, Formentor Peninsula and Cuber Reservoir, from our hotel base near Puerto Pollensa
- 
- Day 8** Fly UK
- 

### Departs

April & September

### Focus

Birds and other natural history

### Grading

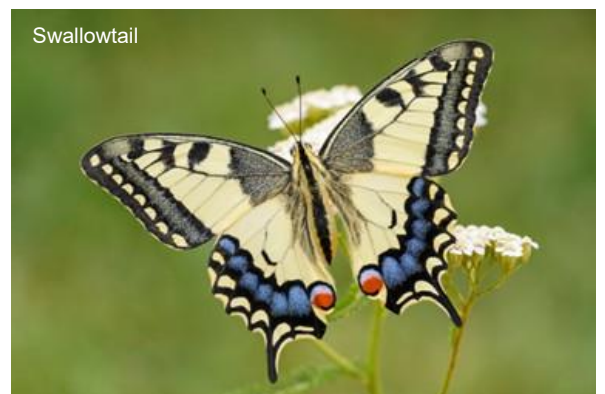
A slow-paced birding tour with easy walking.  
Grade A

### Dates & Prices

See website (tour code ESP49) or brochure

### Highlights

- Superb, relaxed Mediterranean birding
- Cinereous Vulture, Audouin's Gull, Balearic Warbler, herons and wildfowl
- Time to identify and enjoy butterflies & dragonflies
- A comfortable hotel – with superb swimming pools – close to all the main birding sites
- September trip with excellent opportunities for Eleanora's Falcon



Naturetrek Mingledown Barn Wolf's Lane Chawton Alton Hampshire GU34 3HJ UK

T: +44 (0)1962 733051

E: [info@naturetrek.co.uk](mailto:info@naturetrek.co.uk)

W: [www.naturetrek.co.uk](http://www.naturetrek.co.uk)



## Introduction

Our programme of 'Go Slow' Naturetrek holidays aims to allow you time to enjoy the natural world at a more leisurely pace, and with a great deal more leisure time, than on a conventional Naturetrek holiday. This 'Go Slow' tour offers a relaxing week of birding and, as is typical with Naturetrek tours, there will be an emphasis on enjoying our surroundings and other wildlife, as well as the birdlife.

Mallorca is an ideal destination for a first visit to the Mediterranean and will introduce you to a wide range of birds typical to the region, along with some of the island's specialties. The beauty of Mallorca lies in the fact that it contains a wide range of different habitats all in close proximity to one another; ranging from mountains that rise to over 1,000 metres, to the third largest freshwater marsh in the Mediterranean. This enables all the best birding spots to be covered from the one base without the need to change hotels or having to cover vast distances by transport, thus allowing more time in the field actually birdwatching. Indeed, it is even possible to cover both the mountains and marshlands in the same day! We will endeavor to return to the hotel in mid-afternoon to allow plenty of time for relaxation and to enjoy the hotel's facilities.

Due to its relative isolation from the Spanish mainland, Mallorca hosts over 30 species of endemic plants including a relic from the ice age, *Hypericum balearicum*. Orchids are also well represented on the island and although the prime time for these is a little earlier in the spring, we can expect to see a good variety of species in flower in April. Butterflies are also numerous with such species as Swallowtail, Cleopatra and a variety of 'blues' and 'whites' present.

In September we should have good opportunities to see the late-breeding Eleanora's Falcons, especially around Formentor. While some of the birds may be less vocal and sometimes more elusive than in spring, we will also be looking for autumn passage migrants, and the spring species such as Hoopoe and Balearic Woodchat Shrike should still be around. Late-summer butterflies include Two-tailed Pasha and, while the vegetation is generally rather dry, we will look for autumn-flowering plants such as Sea Squill (*Drimia maritima*), and Autumn Narcissus (*Narcissus serotinus*).

All of our daily outings on this tour are optional, and our hotel has excellent swimming pools and other activities should you want a day off from the natural history exploration.

*NB. Please note that the itinerary below offers our planned programme of excursions. However, adverse weather & other local considerations can necessitate some re-ordering of the programme during the course of the tour, though this will always be done to maximise best use of the time and weather conditions available.*

## Day 1

## UK – Puerto Pollensa

We leave Britain and fly direct to Palma, Mallorca from where we transfer to our hotel located on Pollensa Bay between the small resort of Puerto Pollensa and the historic old town of Alcudia. The picturesque Pollensa Bay is in the north-east of the island and well away from the typical brash resorts often associated with Mallorca. Our hotel backs onto S'Albufereta Marsh and has its own hide overlooking the marsh.



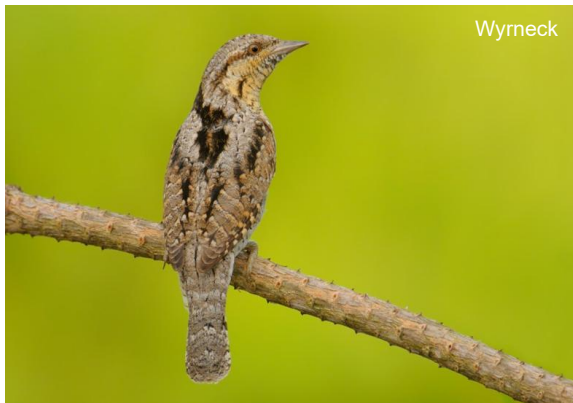
Black-winged Stilt

Should time allow after checking in, we will take an orientation walk around the hotel's extensive grounds and visit the private hide to acclimatise ourselves and get to know some of the typical birds of the Mediterranean region. Species may include Cetti's and Sardinian Warblers, Zitting Cisticola and Serin as well as Marsh Harrier, Little Egret and a selection of waders.

## Day 2

## Puerto Pollensa – Bocquer Valley

The hotel hide offers a superb opportunity for those who want to watch the marsh and its birds before breakfast or after dinner, if light allows. As we are in the spring/autumn migration window, sightings often differ every morning and evening.



Wryneck

After breakfast we take a walk in the Bocquer Valley, a spectacular rocky valley leading to Mallorca's north coast and one of the best-known birding spots on the island. Here we will hopefully get to know Hoopoe, 'Balearic' Woodchat Shrike, Booted Eagle, Blue Rock Thrush, Wryneck, Cirl Bunting and any migrants that are passing through this spectacular valley. If we are really lucky we might find a Balearic Warbler.

The vegetation of the Bocquer Valley is typical Mediterranean dry garrigue with pin-cushion plants such as the endemic Hedgehog Lettuce (*Launea cervicornis*) as well as Dwarf Fan Palm (*Chamaerops humilis*), the only native palm in Europe.

Should we have time after our visit to the valley, we will visit the southern end of S'Albufereta Marsh. The parking area contains the remains of an old Roman quarry which has created a habitat not unlike a limestone pavement, and holds a wide variety of plants which, in spring, will hopefully include a few late orchids. We will visit a hide giving a view into the marsh waterways and there should be plenty of herons and egrets to see, together with a selection of waders including Kentish and Little Ringed Plovers and Black-winged Stilt.

## Day 3

## Puerto Pollensa – Formentor

Today we visit the Formentor Peninsula, the north-eastern extension of the Tramuntana range. Here there are yet more spectacular views, this time coastal, and there will be plenty of time to admire them as we look for Scopoli's and Balearic Shearwaters, and more migrants. We may also catch sight of a dolphin in the seas around the lighthouse.

We will stop at Casas Vellas on our way back from the Formentor lighthouse. This is a small agricultural area of fig and olive trees and vines set in the pine woods and often attracts migrants on their way north, as well as being

home to the Balearic sub-species of Crossbill and Firecrest. At this time of year Bee-eaters are passing through the island and Casas Vellas gives us an excellent chance of seeing these colourful birds on migration.



Scopoli's Shearwater

Parking permitting, we may visit the Albercutx viewpoint where stunning views of both Puerto Pollensa and the Formentor Peninsula are found. Here Blue Rock Thrush, Crag Martin and Black Redstart may be seen, together with the occasional passage of migrating raptors over the nearby ridge.

Our plan would then be to have our lunch at a recently renovated area at the northern end of S'Albufereta Marsh. A short walk through an area rich in wild flowers should provide an opportunity to see numerous butterflies and dragonflies, and we will check the two pools for herons, egrets and waders, and the surrounding tamarisk for passerines.

## Day 4

## Puerto Pollensa – Cuber Reservoir



Booted Eagle

The Tramuntana Mountains and Cuber Reservoir are on every birdwatcher's itinerary when visiting Mallorca and today we will travel up into these spectacular mountains (if the weather allows). They are composed mainly of limestone and reach heights of nearly 1,500 metres with a total of 37 peaks over 1,000 metres, two of which are higher than Ben Nevis. This area is the home to the rare Cinereous Vulture and we hope to catch

views of these spectacular birds with a wingspan of about three metres.

We will take the road out of Puerto Pollensa which, after Pollensa town itself, winds slowly up into the mountains giving splendid views round every corner. We shall drive straight to Cuber Reservoir where we stand our best chance of seeing Cinereous Vulture. We also hope to see such species as Tawny Pipit and Spectacled Warbler, although both are difficult if it is at all windy. However, the views are always spectacular

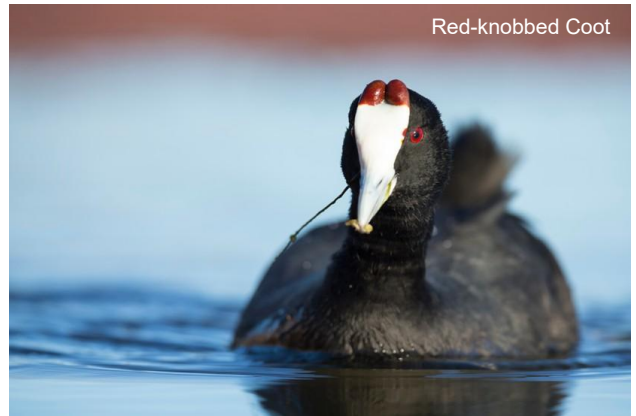
and we also have the chance of seeing additional raptors such as Griffon Vulture, Booted Eagle, Osprey, Peregrine Falcon and Red Kite.

After our picnic lunch in the high mountains, we will descend to a slightly lower level and visit Lluç Monastery. We will walk around the Jardín Botánico (Botanical Garden) which provides an interesting habitat for numerous bird species, and there will be an opportunity to visit the monastery itself.

## Day 5

## Puerto Pollensa – S'Albufera Reserve

Today we visit S'Albufera, the third largest marsh in the Mediterranean and a newly designated 'Parc Natural'. A British company attempted to drain the marsh in the 1860's; luckily for wildlife this attempt failed and it left behind a legacy of 400 kilometres of channels and canals, plus 50 kilometres of tracks, making this one of the easiest marshes to birdwatch. We will spend our day here, visiting the hides and walking some of the tracks in this impressive wetland which covers over 2,000 hectares. We will look for typical marsh species such as Purple Heron, Little Egret, Cattle Egret and Marsh Harrier together with waders and passerines such as Great Reed Warbler. Nightingales can be heard around the Information Centre area and they are often seen in the open. The Parc is home to the Moustached Warbler of which there are some 1,000 to 4,000 pairs, the greatest density anywhere in its range. There are also populations of Western Swamphen and Red-knobbed Coot, and we will be hoping to see these impressive birds.



Red-knobbed Coot

The marsh itself has extensive areas of *Cladium* and *Phragmites* reeds. However, it does have a good selection of flowers on some of the drier areas, as well as colonies of the very rare, near-endemic Loose-flowered Orchid (*Anacamptis palustris* subsp. *robusta*), found only in Mallorca and Algeria.

## Day 6

## Puerto Pollensa – Son Real

Another local day today where we plan to have around a half day out to Son Real.

The Son Real estate is a "posseió" (old manor house and estate) located just south of Can Picafort, in the municipality of Santa Margalida; its 395 hectares, which includes a working, organic farm and is home to native breeds of domesticated animals, was purchased by the Regional Government of the Balearic Islands back in 2014. It consists of mixed landscapes, including heathland, Pine and Holm Oak woodland and a section of coast, as well as arable farmland.

There is a visitors' centre and a well-preserved traditional Mallorcan farmhouse which has some exhibitions, especially highlighting its rich archaeological and historical heritage.

Resident species include Stone-curlew, Hoopoe, Thekla Lark, Stonechat, Firecrest and the Balearic race of Crossbill which can all be seen within the woods and arable farmland. This site also contains warblers and on the coastal section has produced Dartford Warbler, Balearic Warbler and the ubiquitous Sardinian Warbler.

In the spring the Balearic race of Woodchat Shrike and Mediterranean Flycatcher (a recent split from Spotted Flycatcher) arrive and also Audouin's Gull can be seen by the coast as well as a few breeding Kentish Plovers. We'll have our picnic lunch here before returning back to our hotel for the rest of the afternoon, or you may wish to visit the historic town of Alcudia, with its 14th-century town walls.

## Day 7

## Puerto Pollensa – southern S'Albufera

On our final full day we visit the southern end of S'Albufera Reserve. This area provides an alternative habitat to that visited earlier in the week and we hope to see new species. It also gives us the possibility of catching up with any target species previously missed.



Moustached Warbler

Our first stop will be at the old disused salt pans where we hope to get close views of a number of wader species, and the rare Marbled Duck may also be present. We will walk along a track through the reeds and have another opportunity to see Moustached Warbler in the surrounding reedbeds. At the end of the track is an old sand quarry area where Bee-eaters can be present.

Afterwards, we will drive round to the Depuradora (waterworks) where the elevated lookout platform provides excellent views over the man-made water areas. Here wildfowl, waders and terns will be our target, together with the numerous flowers and butterflies that flourish here.

We will take advantage of the lookout stairway to provide seating for our picnic lunch before heading back gradually to our hotel perhaps stopping off at the southern part of the S'Albufereta to see what new species of waders, terns or other migrants may have dropped in.

After a very enthralling day, we return to the hotel to allow everyone plenty of time to relax and carry out their packing in preparation for tomorrow's flight home.

## Day 8

## Puerto Pollensa – UK

Today is departure day. If time allows before we have to leave for the airport we will have one last look over S'Albufereta Marsh to look at the birds typical of this beautiful Mediterranean island.

## Tour Grading

This tour is graded A and will consist of day walks only and as such is suitable for any age and level of fitness. It is based at one hotel near Puerto Pollensa in the north-east of the island, close to the best birdwatching sites. From here we will be taking day trips by minibus, visiting the various sites looking for birds and other wildlife, and taking a picnic lunch with us. We will usually return to the hotel in good time in the afternoon, sometimes offering another chance to go out later. While this is quite a leisurely tour, on some days, we may need to leave quite early in the morning (8.30am or before) in order to maximise our opportunities.

## Weather

Late April is generally warm and sunny but the weather can still be changeable. It is therefore wise to be prepared for all conditions from shorts and 'T' shirts to pullover and waterproofs. The daily itinerary may be changed round not only to allow for weather but also to take advantage of any unusual bird sightings that often happen at this time of year.

In September, the weather is likely to be warm to hot and may be quite humid; thunderstorms are not infrequent, and we recommend you come prepared for mosquitoes, which can be a nuisance in some areas if it is still.

## Food & accommodation

All food and accommodation is included in the price of this holiday starting with dinner on Day 1 and ending with breakfast on Day 8.

Our hotel is located a couple of kilometres outside Puerto Pollensa on Pollensa Bay. A regular bus service runs from Alcudia to Puerto Pollensa with a stop outside the hotel. There is a bird hide overlooking S'Albufereta Marsh accessible to hotel guests from the grounds. There are three swimming pools and a number of tennis courts available to hotel residents. Breakfast and evening meals are buffet service with an excellent wide range of Spanish and international fayre including vegetarian options. On most evenings there is entertainment in the lounge adjacent to the hotel reception.

## Regional Departures

Palma is a popular holiday destination and subject to confirmation we hope to be able to offer direct flights from a wide selection of regional airports including Gatwick, Heathrow, Stansted, Manchester, Birmingham, Leeds/Bradford and Newcastle. Contact us for details, or make your preference known upon booking. Depending on flight times from regional airports you may have some spare time in Palma at either end of the tour, or you may prefer to take a taxi to/from the hotel. This costs about 70 – 90 euros each way although there is a bus for around 15 euros also.

## How to book your place

In order to book your place on this holiday, please give us a call on 01962 733051 with a credit or debit card, book online at [www.naturetrek.co.uk](http://www.naturetrek.co.uk), or alternatively complete and post the booking form at the back of our main Naturetrek brochure, together with a deposit of 20% of the holiday cost plus any room supplements if required. If you do not have a copy of the brochure, please call us on 01962 733051 or request one via our website. Please stipulate any special requirements, for example extension requests or connecting/regional flights, at the time of booking.



Mallorca