

France - The Vercors

Naturetrek Tour Report

10 - 17 May 2015



The Grand Veymont from the Haut Plateaux



Common Heath - *Ematurga atomaria*



Ophrys sphegodes x *Ophrys insectifera*



Scorpion Fly - *Panorpa meridionalis*

Report and Images by Paul Harnes & Andy Bunten



Naturetrek

Mingledown Barn

Wolf's Lane

Chawton

Alton

Hampshire

GU34 3HJ

UK

T: +44 (0)1962 733051

E: info@naturetrek.co.uk

W: www.naturetrek.co.uk

Tour Leaders: Paul Harmes Naturetrek Naturalist / Botanist
Andy Bunten Ornithologist
with 16 Naturetrek clients

Day 1

Sunday 10th May

London St. Pancras – Lille Europe – Lyon-Part-Dieu – La Chapelle en Vercors:

Fourteen tour participants met Paul and Andy at St. Pancras International Station for the 8.58am Eurostar service to Lille Europe, arriving at 11.30am local time. Following lunch, taken in Pub O'Conway's, we then transferred to the 12.52pm Lille Europe to Toulouse TGV service, arriving at Lyon-Part-Dieu at 4pm. Despite the train being a high-speed service, it was still possible to observe wildlife as we travelled south, although it was not always possible to get the whole group onto sightings. However, birds seen included Common Buzzard, Mute Swan, Wood Pigeon and Kestrel.

Once we arrived at Lyon-Part-Dieu, we met with Robin and Roger, who were already in France, having arrived from Australia. We now made our way to where Paul and Andy completed the vehicle hire formalities, and we collected our minibuses for the final leg of the journey to the Vercors region, travelling towards Grenoble and then Valence. We made a comfort stop at the Aire Burcin, where Kate found the spring form of Map Butterfly, a species new to this tour. Moving on, we turned onto the Valence Motorway which we left at St. Romans. Along the way we saw several Black Kites and a fleeting glimpse of a Harrier. We approached the Vercors plateau via Pont en Royans, and continued to La Chapelle via the attractive Petit Goulets, arriving at the Bellier Hotel, our base for the week, at 7.40pm. We were met by Celine, who quickly allocated our rooms, before we assembled for dinner. We all then retired after a rather long day.

Day 2

Monday 11th May

Fonte d'Urle – Forêt de Lente - Route Combe Laval & Col de la Machine

We began today with an excursion to Vassieux en Vercors. We made a short stop at the cemetery where the victims of the Nazi massacre at that village during the Second World War are buried. While we were there, sightings included Kestrel and White Wagtail and we heard a distant Skylark. In the area behind the cemetery which, until 2012, had been a small quarry, *Viola tricolor* subsp. *subalpina* (Alpine Heartsease) was also recorded, together with two day-flying moths, Burnet Companion and Latticed Heath. A short stop was made on the way up to the Col de la Chau to look down into the valley and across towards the Hauts Plateaux, and the Grand Veymont which, at 2341m, is the highest point in the region. Here we found Large Wall Brown, Small Tortoiseshell, Brimstone and Scarce Swallowtail butterflies, and a Speckled Yellow moth. Plants included *Erinus alpinus* (Fairy Foxglove) and *Saponaria ocymoides* (Rock Soapwort). However, the highlights of this stop were two Eagles, one Short-toed and one Golden. We now moved up to the Font d'Urle, an area of open limestone crags and meadows used for skiing in winter.

As we arrived, a roadside bank was examined, and a good colony of *Soldanella alpina* (Alpine Snowbell) was found, together with *Daphne mezereum* (Mezereon). Parking the vehicles at the refuge, we set off to explore. A snow-patch margin was carpeted with *Crocus vernus* subsp. *albiflorus* (Spring Crocus), in both purple and white colour forms, *Ranunculus pyrenaicus* (Pyrenean Buttercup), a few emerging spikes of *Dactylorhiza sambucina* (Elder-

flowered Orchid), and masses of *Erythronium dens-canis* (Dog-tooth Violet). A flock of Alpine Chough was now circling above us, and several Red-billed Chough were also recorded. Northern Wheatear, Black Redstart and Water Pipit were also present, with occasional views of Griffon Vulture and Black Kite. As we moved towards the viewpoint we added *Narcissus pseudonarcissus* (Wild Daffodil) and *Gentiana verna* (Spring Gentian) and we had an encounter with Alpine Marmots. As we neared the viewpoint, *Scilla bifolia* (Alpine Squill) was added, together with *Draba aizoides* (Yellow Whitlow-grass), *Saxifraga oppositifolia* (Purple Saxifrage) and *Saxifraga moschata* subsp. *delphinoides* (a Musky Saxifrage). Butterflies included Small Tortoiseshell, Heath Fritillary and Grizzled Skipper. It was now time to return to the vehicles, and move to our lunch spot.

Lunch was taken in the Forêt Communale de Bouvante, a little way west of the Font d'Urle. During the meal we recorded *Primula elatior* (Oxlip), *Euphorbia amygdaloides* (Wood Spurge) and the leaves of *Veratrum album* (White False Helleborine). We also saw several Orange Tip butterflies. We now continued on through Lente and the spectacular Route de Combe Laval, on our way to St-Jean-en-Royans to shop for the rest of the week's lunches, before returning to La Chapelle.

The last stop of the day was at the spectacular Col de la Machine, where we enjoyed the views looking down the Combe Laval. Finds included *Lamium garganicum* (Large Red Dead-nettle), *Botrychium lunaria* (Moonwort), and *Valeriana tripteris* (Three-leaved Valerian). Birdlife was a little slow here, with a flock of distant Martins and a solitary Bullfinch only.

Day 3

Tuesday 12th May

Les Merciers – Les Bruyieres & Valchevriere

A pre-breakfast walk around the village produced good views of Honey Buzzard, Serin and Common and Black Redstart, together with a brief glimpse of Cirl Bunting and a distant call of Wryneck. In addition, a rather unexpected Grasshopper Warbler lurked in the hedge near the hotel.

Today we travelled up to the northern end of the Vercors Plateau. Our main objective was to try to find a Wallcreeper, but we found interesting things en route, too. Leaving La Chapelle, we drove north to the village of St Martin en Vercors, before turning right, up towards Herbouilly. We made a short stop at a road verge which had emerging *Orchis pallens* (Pale Orchid), *Lathyrus vernus* (Spring Vetch), *Ribes alpinum* (Mountain Currant) and *Lonicera alpigena* (Alpine Honeysuckle). Song Thrush was singing and we saw Peregrine Falcon and Firecrest.

We continued driving on the back road to Villard-de-Lans, where we passed a large stand of *Petasites albus* (White Butterbur), and on through Lans en Vercors to Les Merciers, where we parked. Setting off for a tall crag, Andy took the birders to a viewpoint from where Wallcreepers had been seen in past years. Settling down on the top of a viewing point to wait and watch for signs of movement, they made themselves comfortable.

Meanwhile, Paul took the botanists off to explore the limestone grassland, finding *Anthyllis montana* (Mountain Kidney Vetch), *Orchis mascula* (Early Purple Orchid), *Globularia punctata* (Common Globularia) and masses of *Dactylorhiza sambucina* (Elder-flowered Orchid). Insects were just becoming active, and we saw Berger's Clouded Yellow, Large Wall Brown, Small Heath and Duke of Burgundy Fritillary. When we all reconvened, Andy's

group had had very clear views of a Common Buzzard, Crag Martin and a Wallcreeper. They also saw a Chamois with a juvenile.

We now moved down to the southern end of the Gorges du Furon, where we took our picnic by the river. Whilst we were there, we added *Adoxa moschatellina* (Moschatel), *Ranunculus aconitifolius* (Aconite-leaved Buttercup) and *Oxalis acetosella* (Wood-sorrel). We also saw and heard Dippers, and added Large and Small White and Little Blue to the butterfly list.

After lunch, we left for some wet meadows at Les Bruyeres, where we found a Goldfinch and Carrion Crow. Plants included *Valeriana dioica* (Marsh Valerian) and *Dactylorhiza majalis* (Broad-leaved Marsh Orchid). A small pond produced a number of Hybrid Edible Frogs, Alpine Newt, Horse Leech and a solitary male Broad-bodied Chaser.

We now retraced our steps from the morning, stopping briefly at the abandoned village of Valchevriere, the scene of a decisive battle between the Germans and the Resistance in 1944, before returning to La Chapelle for dinner.

Day 4

Wednesday 13th May

Reserve Naturelle des Hauts Plateaux du Vercors

After checking the weather forecast, it was apparent that today was probably going to be one of the better days of the week, so Paul and Andy decided to make this the day for visiting the Hauts Plateaux.

Andy and the birders set off from the hotel at 4.15am, following an early breakfast. Driving down through St. Agnan en Vercors, a Roe Deer wandered across the road, before they arrived at La Coche car park. The night was clear and starry with a wonderful bright moon, though torches were still useful to avoid uneven surfaces.

The temperature was around 3-4 degrees as we ascended the plateau. The walk started in darkness and, as we progressed, the dawn chorus commenced with the first birds heard being Song Thrushes with their distinctive repeated phrases. Robins followed closely with Mistle Thrushes striking up later still - giving a good opportunity to compare their song with that of the Song Thrush.

As we climbed, Tree Pipits became more evident with their distinctive song and parachuting display. A Ring Ouzel was 'chack-chacking' from a nearby tree and flew to the top of a further tree where we were able to get the telescope on it and see its distinctive silvery wings.

As we moved along the plateau, we could hear the bubbling calls of Black Grouse, so we approached with care and anticipation. The trees loomed to our right and the calls of the grouse were frustratingly close but nothing was to be seen. However we were very amply rewarded with good views of a number of Citril Finches moving around the small trees in front of us.

We searched the woodlands in vain for a while for our grouse before returning to the path for coffee – whereupon a Black Grouse was seen silhouetted on a distant tree. A few people got a glimpse before the bird vanished. However, Colin and Pam then found a superb displaying bird on top of a conifer tree in the woodland straight ahead – magnificently positioned with the majestic mountains behind. We were able to get the telescopes onto this wonderful bird so excellent views were had, while enjoying coffee, chocolate and biscuits. What could be better?

It was daylight by now, and the vistas and atmosphere of this marvellous site were becoming very apparent. In this area we also found four Crossbills flying around us and perching briefly on the top of pine trees. A wonderful Whinchat sat in a low tree giving us excellent views through the telescope. In addition, a Cuckoo was calling in the distance, Coal and Crested Tits called near us, as did Wrens and a Treecreeper, and a Great Spotted Woodpecker was drumming. Very strident and loud Willow Tits called from the woods and, eventually, most of us got excellent views of this lovely pale bird.

We spent some time searching the distant mountain slopes and, eventually, were rewarded with four or five Chamois making their way along the ridge, wonderfully silhouetted against the blue sky. Then we had to beat a hasty retreat as large Wood Ants were swarming up anyone who stood still for more than a minute or two. No other mammals were seen but there was evidence of very recent 'rootling' by Wild Boars.

We met Paul and his team on their ascent and, after exchanging stories, we continued down to the La Coche picnic area for a well-deserved lunch, we made our way off the Plateaux via another forestry road along the eastern side, returning to La Chapelle.

Paul's group followed the normal daily pattern, leaving the hotel after our 8am breakfast. Just outside La Chapelle, we made our first stop on a steep grassy hillside. Here we found seven Orchid species, including *Anacamptis morio* (Green-winged Orchid), *Ophrys sphegodes* subsp. *sphgodes* (Early Spider Orchid), *Neotinea ustulata* (Burnt Orchid) and *Neottia ovata* (Twayblade). Moving on southwards, we made a second stop just south of St Agnan en Vercors to explore the verges and adjacent meadows. In a wet flush we found *Dactylorhiza alpestris* (Alpine Broad-leaved Marsh Orchid), *Cruciata laevipes* (Crosswort) and a clump of *Narcissus poeticus* (Pheasant's-eye Daffodil). Great Tit and Northern Raven were also recorded. Moving on, we made our way up on to the Reserve Naturelle des Hauts Plateaux, stopping briefly at a viewpoint, where Paul pointed out the differences between *Cardamine heptaphylla* (Seven-leaflet Bitter-cress) and *Cardamine pentaphyllos* (Five-leaflet Bitter-cress). We also found *Paris quadrifolia* (Herb Paris), *Asplenium viride* (Green Spleenwort), *Asplenium trichomanes* subsp. *trichomanes* (Maidenhair Spleenwort), *Sambucus racemosus* (Red-berried Elder) and *Sorbus aria* (Whitebeam). After parking at La Coche car park, we made our way along the roads and tracks through the forest towards the open area higher up, finding *Daphne mezereum* (Mezereon), *Ranunculus pyrenaicus* (Pyrenean Buttercup), *Pinus uncinata* (Mountain Pine) and fine stands of *Narcissus pseudonarcissus* (Wild Daffodil). Tree Pipit, Mistle Thrush and Ring Ouzel were recorded, as well as Tau Emperor, a day-flying moth, and the unusual female form of Clouded Yellow butterfly, (*forma helice*). Coal Tit, Spotted Flycatcher and Firecrest we also seen. On the descent, we explored the mixed coniferous and deciduous woodland and found that *Abies alba* (Silver Fir), *Fagus sylvestris* (Beech) and *Picea abies* (Norway Spruce) were the predominant trees. Addition butterfly species included Green Hairstreak, and Small Tortoiseshell. From here we made our way back down to La Coche for lunch.

After lunch, we followed the birders and travelled along the east side of the Plateau. We made a stop for stunning views of the Grand Veymont, adding *Pulsatilla alpina* (Alpine Pasque Flower), *Daphne cneorum* (Garland Flower) and *Orchis mascula* subsp. *speciosa* (an Early Purple Orchid). At a lower level below the plateau, we stopped to examine a long grassy verge bank near Les Meunieres. Here we found a substantial stand of *Ophrys insectifera* (Fly Orchid) with a good number of *Orchis anthropophora* (Man Orchid). There was also *Orchis pallens* (Pale Orchid), and *Orchis mascula* (Early Purple Orchid). Green Woodpecker was heard calling in the distance, and Brimstone butterflies were rather active. We now returned to La Chapelle to freshen up before dinner.

Day 5

Thursday 14th May

Col de la Bataille – Col de Bacchus - Gigors

Today we travelled down towards the Col de la Machine then on over the Col de la Bataille. Here we stopped briefly to enjoy the spectacular views, before we continued down towards the village of Leoncal, where we turned left and headed south through La Vacharie to the Col de Bacchus. Here we stopped to explore a broad road verge and adjacent wood, finding *Orchis mascula* (Early Purple Orchid), *Neotinea ustulata* (Burnt Orchid), *Neottia nidus-avis* (Bird's-nest Orchid), *Dactylorhiza sambucina* (Elder-flowered Orchid) in both colour forms, *Saponaria ocymoides* (Rock Soapwort), *Orchis simia* (Monkey Orchid), *Silene italica* (Italian Catchfly) and many other species. Down a small lane, the birders saw a pair of hunting Hobbies and Barn Swallow, whilst by a small muddy pool they recorded a number of butterfly species, including Wood White, Pearl-bordered Fritillary, Little Blue and Small Tortoiseshell. One of the interesting points of this morning was a number of Blackcaps singing a rather strange song, which took a little time for Andy to decipher.

From here, we moved to a second site on the Col. Here we added the endemic *Ophrys x flavicans* (Drome Bee Orchid), *Astragalus monspessulanus* (Montpellier Milk-vetch), *Orchis militaris* (Military Orchid), *Orchis simia* (Monkey Orchid), and a stunning patch of c.100 or so spikes of *Orchis provincialis* (Provence Orchid). We now continued on south through Plan-de-Baix and Beaufort sur Gervanne, where we turned west to an area of open scrubby land with marginal woodland, near Gigors, for our lunch stop. Whilst Paul and Andy prepared our picnic, the group began exploring, finding *Limodorum abortivum* (Violet Bird's-nest Orchid), *Helianthemum oelandicum* subsp. *incanum* (Hoary Rockrose), *Quercus pubescens* (Downy Oak) and several spikes of *Ophrys insectifera* (Fly Orchid).

After eating, we set off to explore further, exploring woodland and the scrubby fields, finding *Thymus vulgaris* (Wild Thyme) *Ophrys fuciflora* subsp. *fuciflora* (was *O. linearis*, a Late Spider Orchid), *Cephalanthera longifolia* (Sword-leaved Helleborine), *Cephalanthera damasonium* (White Helleborine), *Orobanche alba* (Thyme Broomrape), *Ophrys x flavicans* (Drome Bee Orchid) and several hybrid Orchids.

Meanwhile, Andy and the birders found the nest of a Great Spotted Woodpecker, which they watched for some time. Also a pair of Peregrine Falcons was seen and Corn Bunting, Greenfinch and Cuckoo were heard. For the butterflies, there was Green-underside Blue, Little Blue, Berger's Clouded Yellow, Heath and Spotted Fritillaries.

It was now time to head north. Along the way, we saw Red-backed Shrike and Black Kite, and we also stopped to look at a *Platanthera bifolia* (Lesser Butterfly Orchid), our twenty-third Orchid species of the day. We then made our way to the hotel.

Day 6

Friday 15th May

Chamaloc – Les Nonnieres – Vallée de Combeau - Archiane

We awoke, today, to our first rain of the week, and it was particularly persistent. Our first planned stop was at the head of the spectacular Col de Rousset. As we approached, and climbed higher, the rain turned to sleet. Low cloud obscured the magnificent views from the top of the Col, so our leaders elected to aim for our furthest destination, in order to try to maximise our chances of dodging the rain. Moving on down the valley through Chamaloc and on down to Die, we turned east through Pont-de-Quart and Châtillon-en-Diois, through Menee

and up to Les Nonnières, where we parked by some meadows. It was still raining, although it was now much lighter. Here, in the woods, we found a good stand of *Cypripedium calceolus* (Lady's Slipper Orchid), but the plants were very late and only one was in flower. *Gentiana angustifolia* (Narrow-leaved Gentian) was just starting to emerge. On an adjacent verge bank we found some fine specimens of *Orchis purpurea* (Lady Orchid) together with *Salvia pratensis* (Meadow Clary) and *Cephalanthera damasonium* (White Helleborine). The inclement weather was having an effect on the insect activity, and very few were being found. Meanwhile, the birders reported Coal Tit and Serin.

We now moved down to the Vallée de Combeau. As the cloud was fast-moving, it often gave tantalizing glimpses of the spectacular scenery. This was the case with the magnificent Rocher de Combeau, and many of the group took the opportunity to take pictures. We stopped on the way up the valley to seek out *Orchis spitzellii* (Spitzel's Orchid), finding about a dozen plants in perfect flower. Further up the valley, we added *Pinus uncinata* (Mountain Pine), *Juniperus communis* (Juniper) and fine show of *Pinguicula grandiflora* (Large-flowered Butterwort) in a ditch.

We now moved back to Les Nonnières, where we took warming refreshments, before visiting the Cirque d'Archiane, a splendid amphitheatre of towering rock faces and cliffs, so group members could take some pictures. By now the rain had returned, so we retraced our steps back to La Chapelle. However, as we were leaving the Cirque, a small number of Griffon Vultures were seen.

On the return journey, as we neared the Vulture roost below Chamaloc, Andy checked the site, but there was no activity due to the bad weather, so we continued back to the hotel, over the Col de Rousset, which was still shrouded in mist and sleet, on our way back to La Chapelle en Vercors for dinner.

Day 7

Saturday 16th May

Presles – Forêt Domaniale des Coulmes & Pont en Royans

We began today, in heavy mist, by driving north through the Grand Goulets tunnel and down, via the Petit Goulets, to St. Eulalie en Vercors, where we turned right and continued on through Pont en Royans and up toward the Rocher de Presles, stopping on the Route de Presles. Here, we found *Orchis militaris* (Military Orchid), a good number of *Orchis anthropophora* (Man Orchid), *Orchis mascula* (Early Purple Orchid), *Neottia nidus-avis* (Bird's-nest Orchid), *Dactylorhiza fuchsii* (Common Spotted Orchid) and *Melittis mellissophyllum* (Bastard Balm). For the birders, there was Chiffchaff, Western Bonelli's Warbler and Blackcap calling, and Common and Alpine Swift seen.

Moving on, we planned to make our next stop at the magnificent Rocher de Presles, a limestone cliff-face overlooking the valley of the River Bourne. However, the thick mist made the site potentially dangerous, so our leaders decided to continue on into the Forêt Domaniale des Coulmes, parking at the Fontaine de Pétouze. Here we explored a forest path and adjacent meadow. Northern Raven, Crested Tit, Coal Tit and Western Bonelli's Warbler were reported, along with *Paris quadrifolia* (Herb Paris), *Polygonatum odoratum* (Angular Solomon's-seal) and a good number of *Cephalanthera longifolia* (Sword-leaved Helleborine) and *Orchis mascula* (Early Purple Orchid).

As we were preparing our picnic, Paul pointed out the emerging buds of *Lilium martagon* (Martagon Lily). After eating, we set off back down the Route de Presles, towards Pont en Royans, where we parked on the outskirts and walked down to Le Picard Restaurant, famous for its ice creams, where some of us indulged and others enjoyed hot chocolate. Opposite the café, we watched an adult Dipper feeding a chick, Grey Wagtails, also feeding by the river, and Crag Martin.

Leaving Pont en Royans, we made our way back to La Chapelle en Vercors, with time to pack for tomorrow's homeward journey, and a last dinner of the trip.

Day 8

Sunday 17th May

La Chapelle en Vercors – Lyon-Part-Dieu – Lille Europe - London St. Pancras

We left La Chapelle en Vercors at 7am, bidding farewell to Mme. Bellier and her staff, and made our way via Pont en Royans and Romans, where we joined the motorway to Grenoble. We then headed north to Lyon-Part-Dieu. En route, we had plenty of time to admire the scenery and spot some birds from the vehicles, including Common Buzzard, Black Kite, Kestrel, Little Egret, Northern Raven, Grey Heron and Carrion Crow.

At Lyon-Part-Dieu Station, the group said farewell to Paul, who was staying on to collect another Naturetrek group visiting the Vercors, and Robin and Roger, who were moving on to join the Cevenne tour. The remainder of the group, with Andy, then caught the TGV back to Lille, and then the Eurostar to St. Pancras.

Receive our e-newsletter

Join the Naturetrek e-mailing list and be the first to hear about new tours, additional departures and new dates, tour reports and special offers. Visit www.naturetrek.co.uk to sign up.

Naturetrek Facebook

We are delighted to launch the Naturetrek Facebook page so that participants of Naturetrek tours can remain in touch after the holiday and share photos, comments and future travel plans.

Setting up a personal profile at www.facebook.com is quick, free and easy. The [Naturetrek Facebook page](#) is now live; do please pay us a visit!

Species Lists

Plants

Nomenclature contained within this list follows the taxonomic amendments, based on DNA analysis, made by the Royal Botanic Gardens, Kew and the Missouri Botanic Garden, and following The Plant List, an internationally accepted list of vascular plant families, published and maintained by these two Institutions.

Scientific name	Common name	Location
PTERIDOPHYTES	FERNS & ALLIES	
Calamophytes	Horsetails	
Equisetaceae	Horsetail Family	
<i>Equisetum telmateia</i>	Great Horsetail	Roadsides
Eusporangiate Ferns	Adder's-tongues & Moonworts	
Ophioglossaceae	Adder's-tongue family	
<i>Botrychium lunaria</i>	Moonwort	Col de la Machine
Leptosporangiate Ferns	True Ferns	
Aspleniaceae	Spleenwort Family	
<i>Asplenium fontanum</i>	Smooth Rock Spleenwort	Col de la Machine
<i>Asplenium ruta-muraria</i>	Wall Rue	Les Merciers
<i>Asplenium trichomanes</i> subsp. <i>quadrivalens</i>	Maidenhair Spleenwort	Font d'Urle
<i>Asplenium viride</i>	Green Spleenwort	Herbouilly
Athyriaceae	Lady-fern Family	
<i>Athyrium filix-femina</i>	Lady-fern	Gorges du Furon
Cystopteraceae	Bladder-fern Family	
<i>Cystopteris fragilis</i>	Brittle Bladder-fern	Herbouilly
<i>Gymnocarpium robertianum</i>	Limestone Fern	Hauts Plateaux
Dennstaedtiaceae	Bracken Family	
<i>Pteridium aquilinum</i>	Bracken	Foret des Coulmes
Dryopteridaceae	Buckler-fern Family	
<i>Dryopteris carthusiana</i>	Narrow Buckler-fern	
<i>Dryopteris dilatata</i>	Broad Buckler-fern	
<i>Dryopteris filix-mas</i>	Male-fern	Gorges du Furon
<i>Polystichum aculeatum</i>	Hard Shield-fern	
<i>Polystichum lonchitis</i>	Holly Fern	Font d'Urle
<i>Polystichum setiferum</i>	Soft Shield-fern	
GYMNOSPERMS	CONIFERS	
Cupressaceae	Juniper Family	
<i>Juniperus communis</i>	Juniper	Font d'Urle

Scientific name	Common name	Location
Pinaceae	Pine Family	
<i>Abies alba</i>	European Silver Fir	Gorges du Furon
<i>Larix decidua</i>	European Larch	
<i>Larix kaempferi</i> (Planted)	Japanese Larch	
<i>Picea abies</i> subsp. <i>abies</i>	Spruce	Gorges du Furon
<i>Pinus mugo</i> (Introduced)	Dwarf Mountain Pine	
<i>Pinus nigra</i> subsp. <i>nigra</i>	Austrian or Black Pine	Gigors
<i>Pinus sylvestris</i>	Scots Pine	Menée
<i>Pinus uncinata</i>	Mountain Pine	Hauts Plateaux
Taxaceae	Yew Family	
<i>Taxus baccata</i>	Yew	
ANGIOSPERMS	FLOWERING PLANTS	
Eu-Dicots	True Dicotyledons	
Adoxaceae	Moschatel Family	
<i>Adoxa moschatellina</i>	Moschatel	Gorges du Furon
<i>Sambucus ebulus</i>	Dwarf Elder	
<i>Sambucus nigra</i>	Elder	
<i>Sambucus racemosus</i>	Red-berried Elder	Hauts Plateaux
<i>Viburnum lantana</i>	Wayfaring Tree	Les Merciers
<i>Viburnum opulus</i>	Guelder Rose	
Amaranthaceae	Pigweed Family	
<i>Chenopodium bonus-henricus</i>	Good King Henry	Font d'Urle
Anacardiaceae	Sumach Family	
<i>Cotinus coggygria</i>	Smoke Bush	Presles
Apiaceae	Carrot Family	
<i>Anthriscus sylvestris</i>	Cow Parsley	Presles
<i>Chaerophyllum temulum</i>	Rough Chervil	Col de Bacchus
<i>Laserpitium prutenicum</i>	a Sermountain	Presles
<i>Meum athamanticum</i>	Spignel	Font d'Urle
<i>Pimpinella major</i>	Greater Burnet Saxifrage	Gorges du Furon
Apocynaceae	Periwinkle Family	
<i>Vincetoxicum hirundinaria</i>	Swallow-wort	Les Merciers
Aquifoliaceae	Holly Family	
<i>Ilex aquifolium</i>	Holly	Les Merciers
Araliaceae	Ivy Family	
<i>Hedera helix</i> agg	Ivy	La Chapelle en Vercors
Betulaceae	Birch Family	
<i>Corylus avellana</i>	Hazel	Les Merciers
Boraginaceae	Forget-me-not Family	
<i>Myosotis discolor</i>	Changing Forget-me-not	Gigors

Scientific name	Common name	Location
<i>Myosotis sylvatica</i>	Wood Forget-me-not	Herbouilly
<i>Pulmonaria montana</i>	Mountain Lungwort	Font d'Urle
Brassicaceae	Cabbage Family	
<i>Alliaria petiolata</i>	Garlic Mustard	Gorges du Furon
<i>Alyssum montanum</i>	Mountain Alyssum	Font d'Urle
<i>Arabis alpina</i>	Alpine Rock-cress	Font d'Urle
<i>Arabis hirsuta</i>	Hairy Rock-cress	Les Merciers
<i>Arabis turrita</i>	Tower-cress	Vassieux cemetery
<i>Bunias orientalis</i>	Warty Cabbage	La Chapelle en Vercors
<i>Capsella bursa-pastoris</i>	Shepherd's-purse	Les Merciers
<i>Cardamine heptaphylla</i>	Seven-leaflet Bitter-cress	Hauts Plateaux
<i>Cardamine pentaphyllos</i>	Five-leaflet Bitter-cress	Valchevriere
<i>Cardamine pratensis</i>	Lady's Smock	Gorges du Furon
<i>Draba aizoides</i>	Yellow Whitlow-grass	Font d'Urle
<i>Kernera saxatilis</i>	Kernera	Col de la Machine
<i>Lunaria annua</i>	Honesty	La Chapelle en Vercors
<i>Thlaspi montanum</i>	Mountain Penny-cress	Font d'Urle
Buxaceae	Box Family	
<i>Buxus sempervirens</i>	Box	Menee
Caprifoliaceae	Honeysuckle Family	
<i>Centranthus ruber</i>	Red Valerian	Plan de Baix
<i>Knautia dipsacifolia</i>	Wood Scabious	Col de Bacchus
<i>Lonicera alpigena</i>	Alpine Honeysuckle	Herbouilly
<i>Lonicera xylosteum</i>	Fly Honeysuckle	Col de Bacchus
<i>Valeriana dioica</i>	Marsh Valerian	Les Bruyeres
<i>Valeriana montana</i>	Mountain Valerian	Above Les Nonnieres
<i>Valeriana tripteris</i>	Three-leaved Valerian	Col de la Machine
<i>Valeranella dentata</i>	Narrow-fruted Cornsalad	Gigors
Caryophyllaceae	Pink Family	
<i>Saponaria ocymoides</i>	Rock Soapwort	Col de la Chau
<i>Silene dioica</i>	Red Campion	Les Merciers
<i>Silene (Lychnis) flos-cuculi</i>	Ragged Robin	Les Bruyeres (leaves)
<i>Silene latifolia</i>	White Campion	Above Les Nonnieres
<i>Stellaria media</i>	Chickweed	Les Merciers
Cistaceae	Rock-rose Family	
<i>Helianthemum apenninum</i>	White Rock-rose	Gigors
<i>Helianthemum nummularium</i>	Common Rock-rose	Hauts Plateaux
<i>H.oelandicum</i> subsp. <i>incanum</i>	Hoary Rock-rose	Gigors
Compositae (Asteraceae)	Daisy Family	
<i>Bellidastrium michelii</i> (<i>Aster bellidiastrum</i>)	False Aster	Foret des Coulmes
<i>Bellis perennis</i>	Daisy	Common
<i>Mycelis muralis</i>	Wall Lettuce	Pont en Royans
<i>Petasites albus</i>	White Butterbur	Villard de Lans
<i>Senecio vulgaris</i>	Groundsel	La Chapelle en Vercors
<i>Sonchus asper</i>	Prickly Sow-thistle	La Chapelle en Vercors
<i>Taraxacum agg.</i>	Dandelion	Herbouilly

Scientific name	Common name	Location
<i>Tragopogon dubius</i>	a Goat's-beard	Col de Bacchus
<i>Tragopogon pratensis</i>	Goat's-beard	Foret des Coulmes
<i>Tripleurospermum inodorum</i>	Scentless Mayweed	Hauts Plateaux
Convolvulaceae	Bindweed Family	
<i>Cuscuta europaeum</i>	Greater Dodder	Les Merciers
Cornaceae	Dogwood Family	
<i>Cornus sanguinea</i>	Dogwood	Col de Bacchus
Crassulaceae	Stonecrop Family	
<i>Sedum dasyphyllum</i>	Fat Stonecrop	Les Merciers (leaves)
Ericaceae	Heath family	
<i>Arctostaphylos uva-ursi</i>	Bearberry	Hauts Plateaux
<i>Vaccinium myrtillus</i>	Bilberry	Hauts Plateaux
Euphorbiaceae	Spurge Family	
<i>Euphorbia amygdaloides</i>	Wood Spurge	Herbouilly
<i>Euphorbia cyparissias</i>	Cypress Spurge	Les Merciers
<i>Euphorbia dulcis</i>	Sweet Spurge	Herbouilly
<i>Euphorbia helioscopia</i>	Sun Spurge	Les Gallands
<i>Euphorbia verrucosa</i>	-	Hauts Plateaux
Fagaceae	Oak & Beech Family	
<i>Fagus sylvatica</i>	Beech	Foret de Bouvante
<i>Quercus pubescens</i>	Downy Oak	Col de Bacchus
Gentianaceae	Gentian Family	
<i>Gentiana angustifolia</i>	Narrow-leaved Gentian	Above Les Nonnieres
<i>Gentiana clusii</i>	Clusius' Gentian	Font d'Urle
<i>Gentiana cruciata</i>	Cross Gentian	Les Merciers (leaves)
<i>Gentiana verna</i>	Spring Gentian	Font d'Urle
Geraniaceae	Geranium Family	
<i>Geranium robertianum</i>	Herb Robert	Above Les Nonnieres
Grossulariaceae	Gooseberry Family	
<i>Ribes alpinum</i>	Mountain Currant	Herbouilly
Juglandaceae	Walnut Family	
<i>Juglans regia</i>	Walnut	Planted
Lamiaceae	Dead-nettle Family	
<i>Ajuga genevensis</i>	Blue Bugle	Vassieux Cemetery
<i>Ajuga pyramidalis</i>	Pyramidal Bugle	Hauts Plateaux
<i>Lamium gargaricum</i>	Large Red Dead-nettle	Col de la Machine
<i>Lamium purpureum</i>	Red Dead-nettle	Les Merciers
<i>Mentha aquatica</i>	Water Mint	Les Bruyeres
<i>Salvia pratensis</i>	Meadow Clary	Gigors
<i>Teucrium chamaedrys</i>	Wall Germander	Les Merciers (leaves)
<i>Thymus polytrichus</i>	Wild Thyme	Les Merciers

Scientific name	Common name	Location
<i>Thymus vulgaris</i>	A Thyme	Gigors
Leguminoceae (Fabaceae)	Pea Family	
<i>Anthyllis montana</i>	Mountain Kidney-vetch	Les Merciers
<i>Anthyllis vulneraria</i> agg	Kidney-vetch	Hauts Plateaux
<i>Astragalus monspessulanus</i>	Montpelier Milk-vetch	Col de Bacchus
<i>Cytisophyllum sessilifolium</i>	Sessile Broom	Col de Bacchus
<i>Dorycnium pentaphyllum</i>	-	Gigors
<i>Hippocrepis comosa</i>	Horseshoe Vetch	Col de la Chau
<i>Laburnum anagyroides</i>	Laburnum	Below Col de Rousset
<i>Lathyrus setifolius</i>	-	Gigors
<i>Lathyrus vernus</i>	Spring Vetchling	Herbouilly
<i>Lotus alpinus</i>	Alpine Bird's-foot Trefoil	Les Merciers
<i>Lotus maritimus</i>	Dragon's-teeth	Les Gallands
<i>Onobrychis arenaria</i>	a Sainfoin	Above Les Nonnieres
<i>Ononis fruticosa</i>	Shrubby Restharrow	Les Gallands
<i>Robinia pseudoacacia</i>	False Acacia	Roadsides
<i>Trifolium montanum</i>	Mountain Clover	Col de Bacchus
<i>Trifolium pratense</i>	Red Clover	Les Merciers
<i>Vicia orobus</i>	Upright Vetch	Les Gallands
<i>Vicia sativa</i> subsp. <i>segetalis</i>	Common Vetch	Col de la Chau
Lentibulariaceae	Bladderwort Family	
<i>Pinguicula grandiflora</i>	Large-flowered Butterwort	Vallee du Combeau
Linaceae	Flax Family	
<i>Linum perenne</i> agg	Perennial Flax	N of Beaufort sur Gervanne
<i>Linum suffruticosum</i> subsp. <i>salsoloides</i>	Pyrenean Flax	Gigors
Oleaceae	Olive Family	
<i>Fraxinus excelsior</i>	Ash	La Chapelle en Vercors
Onagraceae	Willowherb Family	
<i>Chamerion angustifolium</i>	Rosebay Willowherb	Gorges du Furon
Orobanchaceae	Broomrape Family	
<i>Orobanche alba</i>	Thyme Broomrape	Gigors
<i>Orobanche gracilis</i>	Slender Broomrape	N of Beaufort sur Gervanne
<i>Rhinanthus angustifolius</i> agg	Greater Hay-rattle	Les Gallands
Oxalidaceae	Wood-sorrel Family	
<i>Oxalis acetosella</i>	Wood-sorrel	Gorges du Furon
Papaveraceae	Poppy Family	
<i>Chelidonium majus</i>	Greater Celandine	La Chapelle en Vercors
<i>Papaver rhoeas</i>	Corn Poppy	Gigors
Plantaginaceae	Plantain Family	
<i>Antirrhinum latifolium</i>	Broad-leaved Snapdragon	Menée
<i>Cymbalaria muralis</i>	Ivy-leaved Toadflax	La Chapelle en Vercors
<i>Erinus alpinus</i>	Fairy Foxglove	Col de la Chau
<i>Globularia cordifolia</i>	Matted Globularia	Font d'Urle

Scientific name	Common name	Location
<i>Globularia nudicaulis</i>	Leafless-stemmed Globularia	Hauts Plateaux
<i>Globularia punctata</i>	Common Globularia	Les Merciers
<i>Plantago lanceolata</i>	Ribwort Plantain	Col de la Chau
<i>Plantago major</i>	Greater Plantain	Les Merciers
<i>Plantago media</i>	Hoary or Lamb's-tail Plantain	Les Meunieres
<i>Plantago sempervirens</i>	-	Font d'Urle
<i>Veronica arvensis</i>	Wall Speedwell	Gigors
<i>Veronica chamaedrys</i>	Germander Speedwell	Les Merciers
<i>Veronica persica</i>	Common Field Speedwell	Les Merciers
<i>Veronica serpyllifolia</i>	Thyme-leaved Speedwell	Les Merciers
Plumbaginaceae	Thrift Family	
<i>Armeria alpina</i>	Mountain Thrift	Font d'Urle
Polygalaceae	Milkwort Family	
<i>Polygala alpestris</i>	Mountain Milkwort	Font d'Urle
<i>Polygala nicaeensis</i>	Nice Milkwort	Gigors
Polygonaceae	Knotweed Family	
<i>Persicaria bistorta</i>	Bistort	Font d'Urle
<i>Rumex scutatus</i>	French Sorrel	Les Merciers
Primulaceae	Primrose Family	
<i>Primula elatior</i>	Oxlip	Foret de Bouvante
<i>Primula veris</i>	Cowslip	Font d'Urle
<i>Soldanella alpina</i>	Alpine Snowbell	Font d'Urle
Ranunculaceae	Buttercup Family	
<i>Anemone ranunculoides</i>	Yellow Anemone	Font d'Urle
<i>Aquilegia vulgaris</i>	Columbine	Cirque d'Archiane
<i>Caltha palustris</i>	Kingcups	Gorges du Furon
<i>Ficaria verna</i> agg.	Lesser Celandine	Gorges du Furon
<i>Helleborus foetidus</i>	Stinking Hellebore	Vassieux Cemetery
<i>Pulsatilla alpina</i>	Alpine Pasqueflower	Hauts Plateaux
<i>Ranunculus aconitifolius</i>	Aconite-leaved Buttercup	Foret de Bouvante
<i>Ranunculus acris</i>	Meadow Buttercup	Les Merciers
<i>Ranunculus arvensis</i>	Corn Buttercup	Gigors
<i>Ranunculus bulbosus</i>	Bulbous Buttercup	Les Merciers
<i>Ranunculus montanus</i>	Mountain Buttercup	Les Merciers
<i>Ranunculus muricatus</i>	-	Font d'Urle
<i>Ranunculus pyrenaicus</i>	Pyrenean Buttercup	Font d'Urle
<i>Ranunculus trichophyllus</i>	Thread-leaved Water-crowfoot	Les Bruyeres
<i>Trollius europaeus</i>	Globeflower	Font d'Urle
Rosaceae	Rose Family	
<i>Alchemilla alpina</i>	Alpine Lady's Mantle	Font d'Urle
<i>Alchemilla glabra</i>	Smooth Lady's-mantle	Font d'Urle
<i>Amelanchier ovalis</i>	Juneberry	Col de la Chau
<i>Crataegus monogyna</i>	Hawthorn	Col de Bacchus
<i>Filipendula ulmaria</i>	Meadowsweet	Les Bruyeres
<i>Fragaria moschata</i>	Hautbois Strawberry	Les Gallands
<i>Fragaria vesca</i>	Wild Strawberry	Foret de Bouvante

Scientific name	Common name	Location
<i>Geum rivale</i>	Water Avens	Gorges du Furon
<i>Potentilla crantzii</i>	Alpine Cinquefoil	Font d'Urle
<i>Prunus avium</i>	Wild Cherry	Foret de Bouvante
<i>Prunus mahaleb</i>	St. Lucie's Cherry	Les Merciers
<i>Prunus spinosa</i>	Blackthorn	Vassieux Cemetery
<i>Rosa canina</i> agg	Dog Rose	Herbouilly
<i>Rosa pendulina</i>	Alpine Rose	Hauts Plateaux
<i>Rubus fruticosus</i> agg	Bramble	Col de Bacchus
<i>Sorbus aria</i> agg	Whitebeam	Hauts Plateaux
<i>Sorbus aucuparia</i>	Rowan	Herbouilly
Rubiaceae	Bedstraw Family	
<i>Cruciata laevipes</i>	Crosswort	Les Merciers
<i>Galium aparine</i>	Cleavers	La Chapelle en Vercors
<i>Galium mollugo</i>	Hedge Bedstraw	Herbouilly
<i>Galium odoratum</i>	Sweet Woodruff	Gorges du Furon
<i>Rubia peregrina</i>	Wild Madder	Gigors
<i>Sherardia arvensis</i>	Field Madder	
Salicaceae	Willow & Poplar Family	
<i>Populus tremula</i>	Aspen	Les Merciers
Sapindaceae	Maple Family	
<i>Acer campestre</i>	Field Maple	Col de Bacchus
<i>Acer pseudoplatanus</i>	Sycamore	Col de Bacchus
Saxifragaceae	Saxifrage Family	
<i>Chrysosplenium alternifolium</i>	Alternate-leaved Golden Saxifrage	Gorges du Furon
<i>S. exarata</i> subsp. <i>delphinensis</i>	Musky Saxifrage	Font d'Urle
<i>Saxifraga granulata</i>	Meadow Saxifrage	Font d'Urle
<i>Saxifraga oppositifolia</i>	Purple Saxifrage	Font d'Urle
<i>Saxifraga rotundifolia</i>	Round-leaved saxifrage	Gorges du Furon
Scrophulariaceae	Figwort Family	
<i>Scrophularia canina</i> subsp. <i>hoppii</i>	Alpine Figwort	Les Merciers
Thymelaeaceae	Mezereon Family	
<i>Daphne cneorum</i>	Garland Flower	Hauts Plateaux
<i>Daphne laureola</i>	Spurge Laurel	Col de Bacchus
<i>Daphne mezereum</i>	Mezereon	Font d'Urle
Urticaceae	Nettle Family	
<i>Parietaria judaica</i>	Pellitory-of-the-Wall	La Chapelle en Vercors
<i>Urtica dioica</i>	Common Nettle	Les Merciers
Violaceae	Violet Family	
<i>Viola calcarata</i>	Long-spurred Pansy	Font d'Urle
<i>Viola canina</i>	True Dog Violet	Hauts Plateaux
<i>Viola riviniana</i>	Common Dog Violet	Herbouilly
<i>Viola tricolor</i> subsp. <i>subalpina</i>	Alpine Heartsease	Vassieux Cemetery

Scientific name	Common name	Location
Monocots	Monocotyledons	
Amaryllidaceae	Daffodil Family	
<i>Narcissus poeticus</i>	Pheasant's-eye Daffodil	Font d'Urle
<i>Narcissus pseudonarcissus</i>	Wild Daffodil	Font d'Urle
Araceae	Arum Family	
<i>Arum maculatum</i>	Lords-and-Ladies	Les Merciers
Asparagaceae	Asparagus Family	
<i>Aphyllanthes monspeliensis</i>	Blue Aphyllanthes	Gigors
<i>Convallaria majalis</i>	Lily-of-the -Valley	Hauts Plateaux
<i>Leopoldia (Muscari) comosa</i>	Tassel Hyacinth	Gigors
<i>Muscari neglectum</i>	Grape Hyacinth	Col de Bacchus
<i>Polygonatum odoratum</i>	Angular Solomon's-seal	Col de Bacchus
<i>Ruscus aculeatus</i>	Butcher's-broom	Gigors
<i>Scilla bifolia</i>	Alpine Squill	Font d'Urle
Colchicaceae	Meadow Saffron Family	
<i>Colchicum autumnale</i>	Autumn Crocus	Herbouilly (leaves)
Cyperaceae	Sedge Family	
<i>Carex caryophyllea</i>	Spring Sedge	Font d'Urle
<i>Carex disticha</i>	Brown Sedge	Les Bruyeres
<i>Carex flacca</i>	Glaucous Sedge	Les Mericers
<i>Carex ornithopoda</i>	Bird's-foot Sedge	Hauts Plateaux
Iridaceae	Iris Family	
<i>Crocus vernus</i> subsp. <i>albiflorus</i>	White Crocus	Font d'Urle
Juncaceae	Rush Family	
<i>Luzula luzuloides</i>	White Woodrush	Hauts Plateaux
Liliaceae	Lily Family	
<i>Erythronium dens-canis</i>	Dog's-tooth Violet	Font d'Urle
<i>Gagea liotardii</i> (<i>G. fragifera</i> , <i>G. fistulosa</i>)	a Yellow Star of Bethlehem	Font d'Urle
<i>Tulipa sylvestris</i> subsp. <i>sylvestris</i>	Wild Tulip	Hauts Plateaux
Melanthiaceae	Herb Paris Family	
<i>Paris quadrifolia</i>	Herb Paris	Hauts Plateaux
<i>Veratrum album</i>	White False Helleborine	Foret de Bouvante
Orchidaceae	Orchid Family	
<i>Anacamptis morio</i>	Green-winged Orchid	Near La Chapelle en Vercors
<i>Anacamptis pyramidalis</i>	Pyramidal Orchid	Route Presles
<i>Cephalanthera damasonium</i>	White Helleborine	Col de Bacchus
<i>Cephalanthera longifolia</i>	Narrow-leaved Helleborine	Les Meunieres
<i>Coeloglossum viride</i>	Frog Orchid	Hauts Plateaux (in bud)
<i>Cypripedium calceolus</i>	Lady's Slipper Orchid	Above Les Nonnieres
<i>Dactylorhiza alpestris</i>	Alpine Broad-leaved Marsh Orchid	St Agnan en vercors
<i>Dactylorhiza fuchsii</i>	Common Spotted Orchid	Route Presles
<i>Dactylorhiza majalis</i>	Broad-leaved Marsh Orchid	Les Bruyeres

Scientific name	Common name	Location
<i>Dactylorhiza sambucina</i> (Pink)	Elder-flowered Orchid	Font d'Urle
<i>Dactylorhiza sambucina</i> (Yellow)	Elder-flowered Orchid	Font d'Urle
<i>Gymnadenia conopsea</i> agg.	Fragrant Orchid	Route Presles
<i>Himantoglossum hircinum</i>	Lizard Orchid	Gigors (leaves)
<i>Limodorum abortivum</i>	Violet Bird's-nest Orchid	Gigors (leaves)
<i>Neottia nidus-avis</i>	Bird's-nest Orchid	Col de Bacchus
<i>Neottia ovata</i>	Twayblade	St Agnan en Vercors
<i>Neotinea tridentata</i>	Toothed Orchid	Col de Bacchus
<i>Neotinea tridentata</i> x <i>N. ustulata</i>	Hybrid Orchis	Col de Bacchus
<i>Neotinea ustulata</i>	Burnt Orchid	Near La Chapelle en Vercors
<i>Ophrys x flavicans</i> * (<i>O. drumana</i>)	Drome Bee Orchid	Col de Bacchus
<i>Ophrys x flavicans</i> x <i>O. insectifera</i> *	Hybrid Ophrys	Gigors
<i>Ophrys x flavicans</i> x <i>O. fuciflora</i> *	Hybrid Ophrys	Col de Bacchus
<i>Ophrys fuciflora</i> subsp. <i>fuciflora</i> (<i>O. linearis</i>)	Late Spider Orchid	Near La Chapelle en Vercors
<i>Ophrys insectifera</i>	Fly Orchid	Near La Chapelle en Vercors
<i>Ophrys sphegodes</i> subsp. <i>sphogodes</i>	Early Spider Orchid	Near La Chapelle en Vercors
<i>Ophrys sphegodes</i> x <i>O. insectifera</i>	Hybrid Ophrys	Near La Chapelle en Vercors
<i>Orchis anthropophora</i>	Man Orchid	Near La Chapelle en Vercors
<i>Orchis anthropophora</i> x <i>O. simia</i>	a Hybrid Orchis	Gigors
<i>Orchis mascula</i>	Early Purple Orchid	Les Merciers
<i>Orchis mascula</i> subsp. <i>speciosa</i> (<i>O. ovalis</i>)	an Early Purple Orchid	Hauts Plateaux
<i>Orchis militaris</i>	Military Orchid	Les Meunieres
<i>Orchis pallens</i>	Pale-flowered Orchid	Herbouilly
<i>Orchis provincialis</i>	Provence Orchid	Col de Bacchus
<i>Orchis purpurea</i>	Lady Orchid	Near La Chapelle en Vercors
<i>Orchis simia</i>	Monkey Orchid	Col de Bacchus
<i>Orchis spitzelii</i>	Spitzel's Orchid	Vallee du Combeau
<i>Platanthera bifolia</i>	Lesser Butterfly Orchid	N of Beufort sur Gervanne
Poaceae	Grass Family	
<i>Alopecurus aequalis</i>	Orange Foxtail	Les Bruyeres
<i>Anthoxanthum odoratum</i>	Sweet Vernal Grass	Les Merciers
<i>Dactylis glomerata</i>	Cock's-foot	Les Merciers
<i>Festuca glauca</i>	Blue Fescue	Les Merciers
<i>Festuca ovina</i> agg.	Sheep's Fescue	Les Merciers
<i>Festuca rubra</i> agg.	Red Fescue	Hauts Plateaux
<i>Lolium perenne</i>	Perennial Rye-grass	Col de Bacchus
<i>Poa annua</i>	Annual Meadow-grass	La Chapelle en Vercors
<i>Poa chaixii</i>	Broad-leaved Meadow-grass	Font d'Urle
<i>Poa pratensis</i>	Smooth Meadow-grass	Les Gallands
<i>Poa trivialis</i>	Rough Meadow-grass	Les Gallands
<i>Sesleria caerulea</i>	Blue Moor-grass	Font d'Urle
Potamogetonaceae	Pondweed Family	
<i>Groenlandia densa</i>	Opposite-leaved Pondweed	Les Bruyeres
FUNGI:		
<i>Trametes versicolor</i>	Turkeytail Fungus	Hauts Plateaux

Species Lists

Birds (✓ = recorded but not counted; H = heard only; T = from the train)

	Common name	Scientific name	May							
			10	11	12	13	14	15	16	17
1	Black Grouse	<i>Lyrurus tetrix</i>				✓				
2	Mute Swan	<i>Cygnus olor</i>	T							
3	Grey Heron	<i>Ardea cinerea</i>			✓					✓
4	Little Egret	<i>Egretta garzetta</i>								✓
5	European Honey Buzzard	<i>Pernis apivorus</i>			✓					
6	Black Kite	<i>Milvus migrans</i>	✓	✓			✓			✓
7	Griffon Vulture	<i>Gyps fulvus</i>		✓				✓		
8	Short-toed Snake Eagle	<i>Circaetus gallicus</i>		✓						
9	Common Buzzard	<i>Buteo buteo</i>	✓		✓	H			✓	
10	Golden Eagle	<i>Aquila chrysaetos</i>		✓						
11	Common Kestrel	<i>Falco tinnunculus</i>	T	✓	✓					✓
12	Eurasian Hobby	<i>Falco subbuteo</i>					✓			
13	Peregrine Falcon	<i>F. peregrinus subsp. brooker</i>			✓		✓			
14	Eurasian Coot	<i>Fulica atra</i>	T							
15	European Herring Gull	<i>Larus argentatus</i>	✓							
16	Rock Dove	<i>Columba livia (feral)</i>	T	✓	✓					
17	Common Wood Pigeon	<i>Columba palumbus</i>	T		✓	✓	✓	✓	✓	
18	Eurasian Collared Dove	<i>Streptopelia decaocto</i>	✓		✓	✓	✓	✓	✓	
19	Common Cuckoo	<i>Cuculus canorus</i>			H	H	H			
20	Alpine Swift	<i>Tachymarptis melba</i>		✓					✓	
21	Common Swift	<i>Apus apus</i>	✓	✓	✓	✓	✓		✓	
22	Eurasian Hoopoe	<i>Upupa epops</i>					✓			
23	Eurasian Wryneck	<i>Jynx torquilla</i>		✓	H		H			
24	Great-spotted Woodpecker	<i>Dendrocopos major</i>	✓		H	✓	✓			✓
25	Black Woodpecker	<i>Dryocopus martius</i>							H	
26	European Green Woodpecker	<i>Picus viridis</i>				H	H		H	
27	Red-backed Shrike	<i>Lanius collurio</i>					✓			
28	Eurasian Jay	<i>Garrulus glandarius</i>	✓			✓	✓		✓	
29	Eurasian Magpie	<i>Pica pica</i>	✓	✓	✓	✓	✓		✓	
30	Red-billed Chough	<i>Pyrrhocorax pyrrhocorax</i>		✓	✓					
31	Alpine Chough	<i>Pyrrhocorax graculus</i>		✓	✓				✓	
32	Western Jackdaw	<i>Corvus monedula</i>			✓				✓	
33	Rook	<i>Corvus frugilegus</i>	✓							
34	Carrion Crow	<i>Corvus corone</i>	✓	✓	✓	✓	✓	✓		✓
35	Northern Raven	<i>Corvus corax</i>		✓		✓	✓			
36	Marsh Tit	<i>Poecile palustris</i>	H						✓	
37	Willow Tit	<i>Poecile montanus</i>				✓				
38	Coal Tit	<i>Periparus ater</i>		✓	✓	✓	✓	✓	✓	
39	European Crested Tit	<i>Lophophanes cristatus</i>		✓	✓	✓			✓	
40	Great Tit	<i>Parus major</i>		✓	✓	✓	✓	✓	✓	
41	Eurasian Blue Tit	<i>Cyanistes caeruleus</i>		✓	✓	✓	✓	✓	✓	
42	Eurasian Skylark	<i>Alauda arvensis</i>		✓			H			
43	Barn Swallow	<i>Hirundo rustica</i>		✓	✓		✓			
44	Eurasian Crag Martin	<i>Ptyonoprogne rupestris</i>			✓				✓	
45	Common House Martin	<i>Delichon urbicum</i>		✓	✓		✓		✓	
46	Common Chiffchaff	<i>Phylloscopus collybita</i>		H	H	H	H	H	H	
47	Western Bonelli's Warbler	<i>Phylloscopus bonelli</i>		H			✓			

	Common name	Scientific name	May							
			10	11	12	13	14	15	16	17
48	Common Grasshopper Warbler	<i>Locustella naevia</i>			✓					
49	Eurasian Blackcap	<i>Sylvia atricapilla</i>		✓	H	✓	✓	H	H	
50	Garden Warbler	<i>Sylvia borin</i>					H			
51	Lesser Whitethroat	<i>Sylvia curruca</i>				H				
52	Common Whitethroat	<i>Sylvia communis</i>		✓	✓	✓	✓	H	✓	
53	Common Firecrest	<i>Regulus ignicapilla</i>		✓	✓	✓			✓	
54	Eurasian Wren	<i>Troglodytes troglodytes</i>			✓	H	H		✓	
55	Eurasian Nuthatch	<i>Sitta europaea</i>	✓	✓						
56	Wallcreeper	<i>Tichodroma muraria</i>			✓					
57	Eurasian Treecreeper	<i>Certhia familiaris</i>			✓	H			✓	
58	Common Starling	<i>Sturnus vulgaris</i>	✓						✓	
59	Ring Ouzel	<i>Turdus torquatus alpestris</i>				✓				
60	Common Blackbird	<i>Turdus merula</i>	✓	✓	✓	✓	✓		✓	✓
61	Song Thrush	<i>Turdus philomelos</i>			H	✓	✓	H	H	
62	Mistle Thrush	<i>Turdus viscivorus</i>			✓	✓	✓	✓	H	
63	European Robin	<i>Erithacus rubecula</i>		H	✓	H	H		✓	
64	Common Nightingale	<i>Luscinia megarhynchos</i>					H			
65	Black Redstart	<i>Phoenicurus ochruros</i>		✓	✓	✓	✓	✓	✓	
66	Common Redstart	<i>Phoenicurus phoenicurus</i>		✓	✓	✓	✓	✓	✓	
67	Whinchat	<i>Saxicola rubetra</i>				✓	✓			
68	Northern Wheatear	<i>Oenanthe oenanthe</i>		✓			✓			
69	Spotted Flycatcher	<i>Muscicapa striata</i>				✓				
70	White-throated Dipper	<i>Cinclus cinclus</i>			✓					
71	House Sparrow	<i>Passer domesticus</i>	✓	✓	✓	✓	✓	✓	✓	
72	Dunnock	<i>Prunella modularis</i>				✓				
73	Grey Wagtail	<i>Motacilla cinerea</i>			✓			✓	✓	
74	White Wagtail	<i>Motacilla alba</i>	✓	✓	✓	✓	✓	✓	✓	
75	Tree Pipit	<i>Anthus trivialis</i>				✓	✓			
76	Water Pipit	<i>Anthus spinoletta</i>		✓						
77	Common Chaffinch	<i>Fringilla coelebs</i>	H	✓	✓	✓	✓	✓	✓	✓
78	European Serin	<i>Serinus serinus</i>		✓	✓	✓	✓	✓	✓	
79	European Greenfinch	<i>Chloris chloris</i>		H	H	H	✓	H	H	
80	European Goldfinch	<i>Carduelis carduelis</i>		✓	✓	✓	✓	✓	✓	
81	Citril Finch	<i>Carduelis citrinella</i>				✓		✓		
82	Red Crossbill	<i>Loxia curvirostra</i>				✓				
83	Eurasian Bullfinch	<i>Pyrrhula pyrrhula</i>		✓	H	✓			H	
84	Corn Bunting	<i>Emberiza calandra</i>					H			
85	Yellowhammer	<i>Emberiza citrinella</i>					H			
86	Cirl Bunting	<i>Emberiza cirlus</i>			✓		✓			

Mammals (D = dead; Tu = tunnels)

1	Western Hedgehog	<i>Erinaceus europaeus</i>	D							
2	Weasel	<i>Mustela nivalis</i>				✓				
3	Pine Marten	<i>Martes martes</i>		✓						
4	Eurasian Badger	<i>Meles meles</i>						D		
5	European Roe Deer	<i>Capreolus capreolus</i>				✓				
6	Alpine Chamois	<i>Rupicapra rupicapra</i>			✓	✓				
7	Red Squirrel	<i>Sciurus vulgaris</i>							✓	
8	Alpine Marmot	<i>Marmota marmota</i>		✓						
9	Snow Vole	<i>Microtus nivalis</i>		Tu		Tu				

	Common name	Scientific name	May						
			10	11	12	13	14	15	16

Amphibians & Reptiles (LO = Leader Only)

1	Alpine Newt	<i>Ichthyosaura alpestris</i>			✓					
2	Edible-Pool Frog hybrid	<i>Pelophylax kl. esculentus</i>			✓					
3	Western Green Lizard	<i>Lacerta bilineata</i>				✓				
4	Common Lizard	<i>Zootoca vivipara</i>		✓	✓	✓				
5	Aesculapian Snake	<i>Zamenis longissimus</i>				LO				

Butterflies

1	Swallowtail	<i>Papilio machaon</i>			✓		✓			
2	Scarce Swallowtail	<i>Iphiclides podalirius</i>		✓		✓	✓			
3	Large White	<i>Pieris brassicae</i>			✓					
4	Small White	<i>Artogeia rapae</i>			✓	✓	✓			
5	Orange Tip	<i>Anthocharis cardamines</i>		✓	✓	✓	✓			
6	Clouded Yellow	<i>Colias crocea</i>		✓		✓	✓			
7	Clouded Yellow	<i>Colias crocea f. helice</i>				✓				
8	Berger's Clouded Yellow	<i>Colias alfacariensis</i>			✓		✓			
9	Brimstone	<i>Gonepteryx rhamni</i>		✓	✓	✓	✓			
10	Cleopatra	<i>Gonepteryx cleopatra</i>					✓			
11	Wood White	<i>Leptidea sinapis</i>			✓	✓	✓			
12	Green Hairstreak	<i>Callophrys rubi</i>		✓	✓	✓				
13	Little Blue	<i>Cupido minimus</i>			✓		✓			
14	Green-underside Blue	<i>Glaucopsyche alexis</i>					✓			
15	Duke of Burgundy Fritillary	<i>Hamearis lucina</i>			✓		✓			
16	Red Admiral	<i>Vanessa atalanta</i>				✓	✓			
17	Painted Lady	<i>Vanessa cardui</i>		✓	✓	✓	✓			
18	Small Tortoiseshell	<i>Aglaia urticae</i>		✓	✓	✓	✓			
19	Comma Butterfly	<i>Polygonia c-album</i>			✓		✓			
20	Map Butterfly	<i>Araschnia levana</i>	✓							
21	Pearl-bordered Fritillary	<i>Clossiana euphrosyne</i>					✓			
22	Spotted Fritillary	<i>Melitaea didyma</i>					✓			
23	Heath Fritillary	<i>Melicta athalia</i>		✓		✓	✓			
24	Small Heath	<i>Coenonympha pamphilus</i>		✓	✓	✓	✓			
25	Speckled Wood	<i>Pararge aegeria tircis</i>					✓			
26	Large Wall Brown	<i>Lasiommata maera</i>		✓	✓					
27	Grizzled Skipper	<i>Pyrgus malvae</i>		✓		✓	✓			

Moths (B = bivouac)

Micro:

1	Moth (Long Antennae)	<i>Adela reaumurella</i>							✓	
2	Meal Moth	<i>Pyralis farinalis</i>						✓		

Macro:

1	Fox Moth	<i>Macrothylacia rubi</i>					✓			
2	Tau Emperor	<i>Aglaia tau</i>		✓	✓	✓	✓			
3	Small Argent & Sable	<i>Epirrhoe tristata</i>			✓	✓	✓		✓	
4	Laiticed Heath	<i>Semiothisa clathrata</i>		✓	✓	✓	✓		✓	
5	Speckled Yellow	<i>Pseudopanthera macularia</i>		✓	✓	✓	✓			
6	Common Heath	<i>Ematurga atomaria</i>				✓	✓			
7	Hummingbird Hawk-moth	<i>Macroglossum stellatarum</i>				✓	✓			

	Common name	Scientific name	May							
			10	11	12	13	14	15	16	17
8	Pine Processionary	<i>Thaumetopoea pityocampa</i>		B	B	B		B	B	
9	Bordered Straw	<i>Heliothis peltigera</i>		✓						
10	Silver Y	<i>Autographa gamma</i>		✓	✓					
11	Plain Golden Y	<i>Autographa jota</i>		✓						
12	Mother Shipton	<i>Callistege mi</i>					✓			
13	Burnet Companion	<i>Euclidia glyphica</i>		✓			✓			

Other Invertebrates

1	Broad-bodied Chaser	<i>Libellula depressa</i>			✓					
2	Four-spotted Chaser	<i>Libellula quadrimaculata</i>			✓					
3	Stonefly	<i>Dinocras cephalotes</i>			✓	✓				
4	Field Cricket	<i>Gryllus campestris</i>	H	H	H	H	H			
5	Ear-wig	<i>Anechura bipunctata</i>				✓				
6	Common Pond Skater	<i>Gerris lacustris</i>		✓	✓	✓				
7	Common Back-swimmer	<i>Notonecta glauca</i>		✓	✓	✓				
8	Tree Hopper	<i>Gargara genistae</i>							✓	
9	Froghopper (Red & Black)	<i>Ceropsis vulnerata</i>					✓			
10	Ascalaphid	<i>Libelloides coccajus</i>					✓			
11	Green Lacewing	<i>Chrysopidae sp.</i>							✓	
12	Scorpion Fly	<i>Panorpa meridionalis</i>				✓	✓			
13	Crane-fly sp.	<i>Tipula sp.</i>				✓	✓			
14	Cleg-fly	<i>Haematopota pluvialis</i>			✓					
15	Bee-fly	<i>Bombylius major</i>		✓		✓	✓			
16	Dagger-fly	<i>Empididae sp.</i>				✓				
17	Wood Ant	<i>Formica rufa</i>			✓	✓	✓			
18	Hornet	<i>Vespa crabro</i>					✓			
19	European Paper Wasp	<i>Polistes gallicus</i>					✓			
20	Carpenter Bee	<i>Xylocopa sp.</i>			✓	✓	✓			
21	Honey Bee	<i>Apis mellifera</i>								
22	Buff-tailed Bumblebee	<i>Bombus terrestris</i>		✓	✓	✓	✓			
23	Common Carder Bee	<i>Bombus pascuorum</i>		✓		✓	✓			
24	Red-tailed Bumble Bee	<i>Bombus lapidarius</i>		✓	✓	✓	✓			
25	Common Ground Beetle	<i>Pterostichus sp.</i>					✓			
26	Green Ground Beetle	<i>Carabus auratus</i>		✓						
27	Burying Beetle	<i>Oiceoptoma thoracicum</i>				✓				
28	Cock Chafer	<i>Melolontha melolontha</i>		✓	✓					
29	Rose Chafer	<i>Cetonia aurata</i>	✓		✓					
30	Soldier Beetle	<i>Cantharis rustica</i>		✓	✓	✓				
31	Glow Worm	<i>Lampyrus noctiluca</i>				✓				
32	Wasp Beetle	<i>Clytra arietis</i>		✓						
33	Lily Beetle	<i>Lilioceris lillii</i>			✓					
34	Bloody-nosed Beetle	<i>Timarcha tenebricosa</i>				✓				
35	Pill Woodlouse	<i>Armadillidium vulgare</i>				✓				
36	Green Spider	<i>Micrommata virescens</i>				✓				
37	Nursery-web Spider	<i>Lycosidae sp</i>				✓				

Gastropods & Molluscs

1	Large Black/Orange Slug	<i>Arion ater</i>			✓			✓	✓	
2	Roman Snail	<i>Helix pomatia</i>			✓	✓			✓	

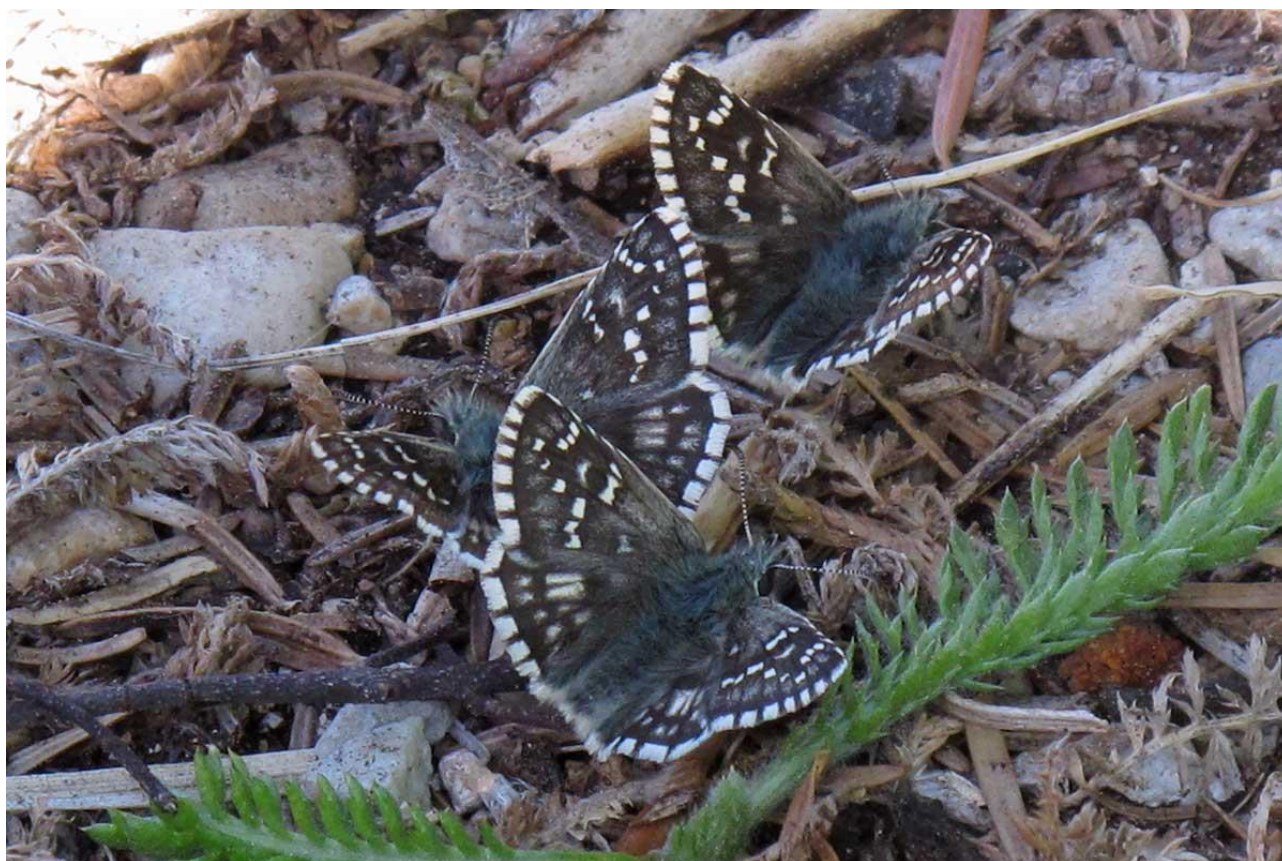
	Common name	Scientific name	May							
			10	11	12	13	14	15	16	17
3	Brown-lipped Banded Snail	<i>Cepaea nemoralis</i>		✓				✓		

Worms

1	Lob Worm	<i>Lumbricus terrestris</i>			✓					
---	----------	-----------------------------	--	--	---	--	--	--	--	--

Segmented Worms

1	Horse Leach	<i>Haemopsis sanguisuga</i>			✓					
---	-------------	-----------------------------	--	--	---	--	--	--	--	--



Grizzled Skippers