

The Wild Flowers of Upper Teesdale

Naturetrek Tour Report

22 - 25 June 2018



Alpine Bartsia (*Bartsia alpina*)



Hybrid Monkeyflower (*Mimulus x robertsii*)



Moonwort (*Botrychium lunaria*)



Group at High Force

Report and images compiled by Dawn Nelson



Naturetrek

Mingledown Barn

Wolf's Lane

Chawton

Alton

Hampshire

GU34 3HJ

UK

T: +44 (0)1962 733051

E: info@naturetrek.co.uk

W: www.naturetrek.co.uk

Tour participants: Dawn Nelson (Leader) with five Naturetrek clients

Summary

Our tour this year was enjoyed by five clients in glorious weather. Highlights, as ever, included the navy-blue flowering heads of Alpine Bartsia (*Bartsia alpina*) at Widdybank Farm as well as the endemic Hoary Rockrose (*Helianthemum oelandicum* subsp. *levigatum*) on Cronkley Fell, where we also found Alpine Bistort (*Persicaria vivipara*), Mountain Avens (*Dryas octopetala*) and Hoary Whitlowgrass (*Draba incana*) in flower, and several fertile fronds of Moonwort (*Botrychium lunaria*) in two locations.

A variety of Orchids were seen, including the locally common Hybrid Orchid (*Dactylorhiza* × *venusta*) which is the cross between Northern Marsh-orchid (*Dactylorhiza purpurella*) and Common Spotted-orchid (*Dactylorhiza fuchsii*), all of which we saw in abundance. We saw two species of Fragrant Orchids (*Gymnadenia borealis* and *G. conopsea*) and both species of Butterfly Orchids (Lesser, *Platanthera bifolia* and Greater, *P. chlorantha*).

We also enjoyed watching gambolling Hares as well Back Grouse and Red Grouse.

Even the short drives to the various locations provided verges awash with Meadow Cranesbill (*Geranium pratense*), stunning shows of Melancholy Thistle (*Cirsium heterophyllum*) and Globeflowers (*Trollius europaeus*).

On our riverside walks we not only saw native Shrubby Cinquefoil (*Potentilla fruticosa*), but also Salmon leaping up Low Force and numerous good sightings of Dippers which added to our enjoyment of this short break.

Day 1

Friday 22nd June

Bowlees, banks of the River Tees near Wynch Bridge

We had a warm sunny afternoon for our first walk; as we crossed the hay meadow we noted many Eyebrights, one of which turned out to be *Euphrasia confusa*. We crossed the pedestrian suspension Bridge into Yorkshire and set off upstream, noting the statuesque Melancholy Thistle (*Cirsium heterophyllum*) and Wood Cranesbill (*Geranium sylvaticum*).

Down on the rocky edge of the river we found Mountain Everlasting (*Antennaria dioica*) and Dwarf Goldenrod (*Solidago vigaurea* subsp. *minuta*) and then continued onwards, seeing Salmon jumping up the waterfall at Low Force and, a little further on, a Dipper.

Common-spotted Orchids (*Dactylorhiza fuchsii*) and the deep purple Northern Marsh-orchids (*Dactylorhiza purpurella*) were seen, as well as several of the hybrids between them (*Dactylorhiza* × *venusta*), which are very robust and showy.

We continued on to where there are several islands in mid-stream and found our first Shrubby Cinquefoil (*Potentilla fruticosa*) and noted Alpine Bistort (*Persicaria vivipara*) with its delicate white flowers above its shiny purple bulbils.

Back on the Durham side at Low Force, we admired the native subspecies of Scots Pine (*Pinus sylvestris* subsp. *scotica*) and found a few sedges including Star Sedge (*Carex echinata*) and Common Yellow-sedge (*Carex demissa*).

Day 2

Saturday 23rd June

Widdybank Farm, Cetry Bank, verges, Herdship, Bowlees Quarry, Summer Force

Today we explored a variety of sites and habitats. On the drive to Widdybank Farm we noted the pale creamy-pink Early Marsh-orchid (*Dactylorhiza incarnata* subsp. *incarnata*). We had permission to enter a species-rich hay meadow, where we found Arctic Eyebright (*Euphrasia arctica*), Alpine Bartsia (*Bartsia alpina*) and False Sedge (*Kobresia simpliciuscula*). From here we walked on to Cetry Bank, getting good sightings of five Hares gambolling, and Skylarks along the way. Clambering down the bank enabled us to find Yellow Saxifrage (*Saxifraga aizoides*) and Lesser Clubmoss (*Selaginella selaginoides*) as well as the rare and delicate Variegated Horsetail (*Equisetum variegatum*).

After lunch we moved on, seeing Masterwort (*Imperatoria ostruthium*) and Globeflowers (*Trollius europaeus*) before we arrived at an orchid bank which provided us with many interesting orchids including Lesser Butterfly-orchid (*Platanthera bifolia*) and both Chalk Fragrant-orchid (*Gymnadenia conopsea*), with a slightly sickly-sweet smell, and Heath Fragrant-orchid (*Gymnadenia borealis*), with a sweet, spicy carnation fragrance. We also found a few Bird's-eye Primroses (*Primula farinosa*) still in flower and Marsh Ragwort (*Senecio aquatilis*) in the ditch.

Our last botanical locations for the day were Bowlees Quarry and Bowlees Beck up to Summer Force. Here we added several more species including Glaucous Dog Rose (*Rosa caesia* subsp. *vosagiaca*) in the quarry, Greater Butterfly-orchid (*Platanthera chlorantha*) on the path upstream, and Brittle Bladder-fern (*Cystopteris fragilis*) in the cave wall at Summer Force Waterfall.

Day 3

Sunday 24th June

Black Grouse lekking site, Cronkley Fell

An early start today found us on the road by 5.30am in the hope of seeing Black Grouse at their traditional lekking site, just up the road. We were in luck, spotting a group of five straight away and 17 in all. Also seen were Red Grouse, Curlew and particularly good views of Skylark and Snipe posing for their photos on fence posts.

After breakfast we enjoyed brilliant sunshine for our day up on Cronkley Fell. As we walked down to Cronkley Bridge we noted several common species such as Cuckooflower (*Cardamine pratensis*); in a small stream we saw the locally common Hybrid Monkeyflower (*Mimulus* × *robertsii* = *M. guttatus* × *luteus*). Crossing Cronkley bridge we walked through hay meadows full of plants such as Ragged-Robin (*Silene flos-cuculi*) and Eyebrights (*Euphrasia* spp.), as well as a good range of grasses.

We climbed up through the Juniper wood on the Pennine Way, noting Beech Fern (*Phegopteris connectilis*) and Parsley Fern (*Cryptogramma crista*), then on up Birk Rigg. Arriving at the first enclosure on Cronkley Fell, we found Spring Sandwort (*Minuartia verna*) and the very rare Hoary Rockrose (*Helianthemum oelandicum* subsp. *levigatum*), which only grows here; both were in abundance. We also found a couple of good-sized populations of Scottish Asphodel (*Tofieldia pusilla*).

We passed the second enclosure, noting numerous seed heads of Spring Gentian (*Gentiana verna*) but, sadly, due the hot dry season, we failed to find any in flower. Then we continued on into a White Well enclosure, where we found Mountain Avens (*Dryas octopetala*), Crowberry (*Empetrum nigrum* subsp. *nigrum*) and five plants of Moonwort (*Botrychium lunaria*), as well as several Broad-leaved helleborines (*Epipactis helleborine*) and also Dark-red Helleborines (*Epipactis atrorubens*) in bud. Returning to enclosure 2, we found Hoary Whitlow-grass (*Draba incana*), more Moonwort, Hair Sedge (*Carex capillaris*) and a patch of Mossy Saxifrage (*Saxifraga hypnoides*).

In a wet flush we found a Frog, Toad tadpoles and shrimps. Plants included more Variegated Horsetail (*Equisetum variegatum*), and Alpine Meadow-rue (*Thalictrum alpinum*) in flower. In all, the day's finds had included 12 members of the Teesdale assemblage of rare plants.

On the track back down we were lucky enough to get good sightings of a pair of Ring Ouzels.

Down at the river we cooled our feet in the water, before heading back to the hotel for our last evening meal together.

Day 4

Monday 25th June

High Force on both sides of the River Tees

Another day of brilliant sunshine welcomed us as we strolled through the riverside pasture downstream from the High Force carpark. Across the river we had a good view of a male Red Deer coming down to drink, near to a Common Sandpiper and more extended views of Dippers. The Bird Cherries (*Prunus padus*) that line the riverside here were looking good, showing developing fruit, with only a few Ermine Moth caterpillar webs.

Across on the Yorkshire side of the river, we headed downstream to see the Lesser Pond-sedge (*Carex acutiformis*). We noted several of the more attractive Horsetails including the delicately much-branched Wood Horsetail (*Equisetum sylvaticum*), and Shady Horsetail (*Equisetum pratense*) with its three-ridged branch segments.

Heading back up stream we found Bog Asphodel (*Narthecium ossifragum*) in flower, as well as a clump of Lemon-scented Fern (*Oreopteris limbosperma*). Aspen (*Populus tremula*) and Elder (*Sambucus nigra*) were seen here, as well as a Dark-green Fritillary.

Back over the river again via Holwick Head Bridge, we retraced our steps and then walked down to see High Force from its traditional viewpoint. We were not disappointed by the view nor by the plants found along the way, which included Sweet Woodruff (*Galium odoratum*) and Marsh Hawk's-beard (*Crepis paludosa*) in quantity; we also had even better views of another Dipper.

Several of the group were going off to explore some more, so we said our goodbyes and headed off in our different ways. I think we all felt it would have been nice to stay a few more days in this good company and in such an amazingly diverse location with the added bonus of such good weather.

Species Lists

Plants

This species list follows the nomenclature in New Flora of the British Isles 3rd Edition by Clive Stace.

Scientific Name	Common Name	
PTERIDOPHYTES		
Lycophytes		
Selaginellaceae		
<i>Selaginella selaginoides</i>	Lesser Clubmoss	Cetry Bank and Cronkley Fell
Eusporangiate Ferns		
Ophioglossaceae		
<i>Botrychium lunaria</i>	Moonwort	Cronkley Fell
Calamophytes		
Equisetaceae		
<i>Equisetum arvense</i>	Field Horsetail	Wat Garth
<i>Equisetum pratense</i>	Shady Horsetail	Downstream from Holwick Head Bridge
<i>Equisetum sylvaticum</i>	Wood Horsetail	Downstream from Holwick Head Bridge
<i>Equisetum variegatum</i>	Variiegated Horsetail	Cetry Bank and Cronkley Fell
Leptosporangiate Ferns		
Aspleniaceae		
<i>Asplenium scolopendrium</i>	Hart's-tongue	High Force
<i>Asplenium trichomanes</i> subsp. <i>quadrialeans</i>	Maidenhair Spleenwort	Holwick Head Bridge
Blechnaceae		
<i>Blechnum spicant</i>	Hard-fern	Pennine Way and Cronkley Fell
Dennstaedtiaceae		
<i>Pteridium aquilinum</i>	Bracken	Common
Dryopteridaceae		
<i>Dryopteris affinis</i>	Scaly Male-fern	River Tees, Bowlees Quarry, Pennine Way
<i>Dryoptereis dilatata</i>	Broad Buckler-fern	Widdybank Farm and Cronkley Fell
<i>Dryopteris filix-mas</i>	Male-fern	Occasional
<i>Polystichum aculeatum</i>	Hard Shield-fern	Summer Force
Polypodiaceae		
<i>Polypodium vulgare</i>	Common Polypody	Cetry Bank, Pennine Way, Holwick Head Bridge
Pteridaceae		
<i>Cryptogramma crispa</i>	Parsley Fern	Pennine Way and Cronkley Fell
Thelypteridaceae		
<i>Oreopteris limbosperma</i>	Lemon-scented Fern	nr High Force

Scientific Name**Common Name***Phegopteris connectilis*

Beech Fern

Pennine Way

Woodsiaceae**Lady-fern Family***Anhyrium felix-femina*

Lady-fern

Frequent

Cystopteris fragilis

Brittle Bladder-fern

Summer Hill Force and High Force

PINACEAE**CONIFERS****Cupressaceae****Juniper Family***Juniperus communis*

Common Juniper

Occasional

Pinaceae**Pine Family***Pinus sylvestris*

Scot's Pine

Occasional

Pinus sylvestris subsp. *scotica*

native Scot's Pine

Low Force

Taxaceae**Yew Family***Taxus baccata*

Yew

High Force

ANGIOSPERMS**FLOWERING PLANTS****Eu-dicots****True Dicotyledons****Amaranthaceae****Goosefoot Family***Chenopodium bonus-henricus*

Good King Henry

Bowlees

Apiaceae**Carrot Family***Aegopodium podagraria*

Ground Elder

High Force

Angelica sylvestris

Angelica

High Force

Anthriscus sylvestris

Cow Parsley

Occasional

Conopodium majus

Pignut

Frequent

Heracleum sphondylium

Hogweed

Occasional

Imperatoria ostruthium

Masterwort

Peghorn Lodge

Myrrhis odorata

Sweet Cicely

Verges when driving

Sanicula europaea

Sanicle

Low Force and Summer Force

Araliaceae**Ivy Family***Hedera helix*

Ivy

High Force

Asteraceae**Daisy Family***Achillea millefolium*

Yarrow

Occasional

Achillea ptarmica

Sneezewort

Herdship

Antennaria dioica

Mountain Everlasting

Low Force, Herdship, Cronkley Fell

Arctium minus

Lesser Burdock

nr High Force

Bellis perennis

Daisy

Common

Cirsium heterophyllum

Melancholy Thistle

Occasional

Cirsium arvense

Creeping Thistle

Occasional

Cirsium palustre

Marsh Thistle

Frequent

Cirsium vulgare

Spear Thistle

Occasional

Crepis paludosa

Marsh Hawk's-beard

Occasional

Hieracium agg.

Hawkweed

Occasional

Hypochaeris radicata

Cat's-ear

Occasional

Lapsana communis

Nipplewort

Bowlees Quarry

Leontodon hispidus

Rough Hawkbit

Frequent

Scientific Name**Common Name**

<i>Leucanthemum vulgare</i>	Oxeye Daisy	Frequent
<i>Matricaria discoides</i>	Pineappleweed	nr Bowlees and Wat Garth
<i>Mycelis muralis</i>	Wall Lettuce	High Force
<i>Petasites hybridus</i>	Butterbur	Driving
<i>Pilosella officinarum</i>	Mouse-ear Hawkweed	Occasional
<i>Senecio aquatilis</i>	Marsh Ragwort	Herdship
<i>Senecio jacobaea</i>	Ragwort	Occasional
<i>Serrulata tinctoria</i>	Sawwort	Low Force
<i>Solidago virgaurea</i>	Goldenrod	Low Force and Cronkley Fell
<i>Solidago virgaurea</i> subsp. <i>minuta</i>	Dwarf Goldenrod	Low Force
<i>Sonchus asper</i>	Prickly Sow-thistle	High Force
<i>Taraxacum agg.</i>	Dandelion group	Frequent
<i>Tussilago farfara</i>	Coltsfoot	Low force, Widdybank Farm, Hanging Shaw

Betulaceae**Birch Family**

<i>Alnus glutinosa</i>	Alder	Frequent
<i>Betula pubescens</i>	Downy Birch	Frequent
<i>Betula pubescens</i> subsp. <i>tortuosa</i>	Downy Birch, upland subsp.	Low Force
<i>Corylus avellana</i>	Hazel	Frequent

Boraginaceae**Borage Family**

<i>Myosotis arvensis</i>	Field Forget-me-not	Frequent
<i>Myosotis secunda</i>	Creeping Forget-me-not	Widdybank Farm, Herdship, Cronkley Farm

Brassicaceae**Cabbage Family**

<i>Alliaria petiolata</i>	Garlic Mustard	Bowlees
<i>Cardamine flexuosa</i>	Wavy Bitter-cress	Summer Froce and High Force
<i>Cardamine pratensis</i>	Cuckooflower	Occasional
<i>Capsella bursa-pastoris</i>	Shepherd's Purse	Wat Garth
<i>Draba incana</i>	Hoary Whitlowgrass	Cronkley Fell
<i>Hesperis matronalis</i>	Dame's-violet	Bowlees

Campanulaceae**Bellflower Family**

<i>Campanula rotundifolia</i>	Harebell	Low Force, Cronkley Fell, High Force
-------------------------------	----------	--------------------------------------

Caprifoliaceae**Honeysuckle Family**

<i>Lonicera periclymenum</i>	Honeysuckle	High Force
<i>Sambucus nigra</i>	Elderberry	Low Force and High Force

Caryophyllaceae**Pink Family**

<i>Cerastium fontanum</i>	Common Mouse-ear	Frequent
<i>Cerastium glomertum</i>	Sticky Mouse-ear	Wat Garth
<i>Sagina procumbens</i>	Procumbent Pearlwort	Low Force, Cowgreen Corner, High Force
<i>Silene dioica</i>	Red Campion	Frequent
<i>Silene flos-cuculi</i>	Ragged Robin	Frequent
<i>Stellaria graminea</i>	Lesser Stichwort	Occasional
<i>Stellaria media</i>	Common Chickweed	Cronkley Farm

Cistaceae**Rockrose Family**

<i>Helianthemum numularium</i>	Common Rock-rose	Low Force, Cetry Bank, Cronkley Fell
<i>Helianthemum oelandicum</i> subsp. <i>levigatum</i>	Hoary Rock-rose	Cronkley Fell

Scientific Name	Common Name	
Crassulaceae	Stonecrop Family	
<i>Sedum acre</i>	Biting stonecrop	Middleton-in-Teesdale, Bowlees
<i>Sedum album</i>	White Stonecrop	Bowlees
<i>Senecio tectorum</i>	House-leek	Bowlees and Widdlybank Farm
Dipsacaceae	Teasel Family	
<i>Succisa pratensis</i>	Devil's-bit Scabious	Frequent (Leaves only)
Droseraceae	Sundew Family	
<i>Drosera rotundifolia</i>	Round-leaved Sundew	Pennine Way and Cronkley Fell
Ericaceae	Heather Family	
<i>Calluna vulgaris</i>	Heather	Common
<i>Empetrum nigrum subsp. nigrum</i>	Crowberry	Cronkley Fell
<i>Erica tetralix</i>	Cross-leaved Heath	Pennine Way, Cronkley Fell, High Force
<i>Vaccinium myrtillus</i>	Bilberry	Low Force and Cronkley Fell
<i>Vaccinium vitis-idaea</i>	Cowberry	Cronkley Fell
Euphorbiaceae	Spurge Family	
<i>Mercurialis perennis</i>	Dog's Mercury	Low Force and High Force
Fabaceae	Pea Family	
<i>Anthyllis vulneraria</i>	Kidney Vetch	Cronkley Fell
<i>Trifolium dubium</i>	Lesser Trefoil	Wat Garth
<i>Trifolium pratense</i>	Red Clover	Frequent
<i>Trifolium repens</i>	White Clover	Frequent
<i>Lathyrus linifolius</i>	Bitter Vetch	Occasional
<i>Lathyrus pratensis</i>	Meadow Vetchling	Occasional
<i>Lotus corniculatus</i>	Brid's-foot-trefoil	Frequent
<i>Vicia sepium</i>	Bush Vetch	Occasional
Fagaceae	Beech Family	
<i>Fagus sylvatica</i>	Beech	Bowlees, Low Force and High Force
Gentianaceae	Gentian Family	
<i>Gentiana verna</i>	Spring Gentian	Cronkley Fell
<i>Gentianella amarella</i>	Felwort	Cronkley Fell (Leaves only)
Geraniaceae	Crane's-bill Family	
<i>Geranium pratense</i>	Meadow Crane's-bill	Verges driving
<i>Geranium robertianum</i>	Herb Robert	Frequent
<i>Geranium sylvaticum</i>	Wood Crane's-bill	Frequent
Hypericaceae	St John's-wort Family	
<i>Hypericum hirsutum</i>	Hairy St John's-wort	Bowlees Quarry
<i>Hypericum pulchrum</i>	Slender St John's-wort	Low Force and High force
Lamiaceae	Dead-nettle Family	
<i>Ajuga reptans</i>	Common Bugle	Occasional
<i>Lamium album</i>	White Dead-nettle	Cronkley Bridge
<i>Prunella vulgaris</i>	Selfheal	Occasional
<i>Stachys sylvatica</i>	Hedge Woundwort	Bowlees Quarry and High Force

Scientific Name	Common Name	
<i>Teucrium scorodonia</i>	Wood Sage	Occasional
<i>Thymus polytrichus</i>	Wild Thyme	Frequent
Linaceae	Flax Family	
<i>Linum catharticum</i>	Purging or Fairy Flax	Frequent
Lentibulariaceae	Butterwort Family	
<i>Pinguicula vulgaris</i>	Common Butterwort	Occasional
Malvaceae	Mallow Family	
<i>Tilia platyphyllos</i>	Large-leaved Lime	Bowlees
Oleaceae	Olive Family	
<i>Fraxinus excelsior</i>	Ash	Common
Onagraceae	Willowherb Family	
<i>Chamerion angustifolium</i>	Rosebay Willowherb	Bowlees, Cronkley Fell, High Force
<i>Epilobium brunnescens</i>	New Zealand Willowherb	Pennine Way
<i>Epilobium montanum</i>	Broad-leaved Willowherb	Occasional
Orobanchaceae	Broomrape Family	
<i>Bartsia alpina</i>	Alpine Bartsia	Widdybank Farm and Cetry Bank
<i>Euphrasia artica</i> subsp. <i>borealis</i>	Arctic Eyebright	Widdybank Farm
<i>Euphrasia</i> sp.	Eyebright	Frequent
<i>Pedicularis palustris</i>	Marsh Lousewort	Widdybank Farm, Cetry Bank, Pennine Way
<i>Pedicularis sylvatica</i>	Lousewort	Low force, Herdship
<i>Rhinanthus minor</i>	Yellow-rattle	Frequent
Oxalidaceae	Wood Sorrel Family	
<i>Oxalis acetosella</i>	Wood-sorrel	Summer Force and High Force
Papaveraceae	Poppy Family	
<i>Mecanopsis cambrica</i>	Welsh Poppy	Occasional
Parnassiaceae	Grass-of-Parnassus Family	
<i>Parnassia palustris</i>	Grass-of-Parnassus	Widdybank Farm (leaves only)
Phrymaceae	Monkeyflower Family	
<i>Mimulus x robertsii</i>	Hybrid Monkeyflower	Occasional
Plantaginaceae	Plantain Family	
<i>Plantago lanecolata</i>	Ribwort Plantain	Frequent
<i>Plantago major</i>	Greater Plantain	Frequent
<i>Plantago maritima</i>	Sea Plantain	Occasional
Polygalaceae	Milkwort Family	
<i>Polygalla serpyllifolia</i>	Heath Milkwort	Widdybank Farm and Cronkley Fell
<i>Polygalla vulgaris</i>	Common Milkwort	Occasional
Polygonaceae	Knotweed Family	
<i>Persicaria bistorta</i>	Common Bistort	Driving at Marshes Gill
<i>Persicaria vivipara</i>	Alpine Bistort	Low Force, Widdybank Farm, Cronkley Fell

Scientific Name	Common Name	
<i>Rumex acetosa</i>	Sorrel	Common
<i>Rumex longifolius</i>	Northern Dock	Frequent
<i>Rumex obtusifolius</i>	Broad-leaved Dock	Occasional
Potamogetonaceae	Pondweed Family	
<i>Potamogeton polygonifolius</i>	Bog Pondweed	Pennine Way, Cronkley Fell
Primulaceae	Primrose Family	
<i>Primula farinosa</i>	Bird's-eye Primrose	Occasional (in flower at Herdship)
<i>Primula vulgaris</i>	Primrose	Bowlees quarry
<i>Lysimachia nemorum</i>	Yellow Pimpernel	High Force
<i>Lysimachia punctata</i>	Dotted Loosestrife	Driving nr Newbiggin
Ranunculaceae	Buttercup Family	
<i>Aquilegia vulgaris</i>	Columbine	Bowlees
<i>Anemone nemorosa</i>	Wood Anemone	Occasional
<i>Caltha palustris</i>	Marsh Marigold	Frequent
<i>Ficaria verna</i>	Lesser Celandine	Summer Force
<i>Ranunculus acris</i>	Meadow Buttercup	Frequent
<i>Ranunculus flammula</i>	Lesser Spearwort	Frequent
<i>Ranunculus repens</i>	Creeping Buttercup	Frequent
<i>Thalictrum alpinum</i>	Alpine Meadow-rue	Cronkley Fell
<i>Trollius europaeus</i>	Globeflower	Widdybank Farm and verge at Unthank
Rosaceae	Rose Family	
<i>Alchemilla filicaulis</i> subsp. <i>vestita</i>	Hairy Lady's-mantle	Low Force and Cronkley Fell
<i>Alchemilla glabra</i>	Smooth Lady's-mantle	Cetry Bank
<i>Alchemilla xanthochlora</i>	Pale Lady's-mantle	Herdship
<i>Crataegus monogyna</i>	Hawthorn	Occasional
<i>Dryas octopetala</i>	Mountain Avens	Cronkley Fell
<i>Filipendula ulmaria</i>	Meadow Sweet	Frequent
<i>Fragaria vesca</i>	Wild Strawberry	Occasional
<i>Geum rivale</i>	Water Avens	Frequent
<i>Geum urbanum</i>	Wood Avens	Frequent
<i>Geum x intermedium</i>	Water Avens x Wood Avens	Low Force
<i>Potentilla anserina</i>	Silverweed	Occasional
<i>Potentilla erecta</i>	Tormentil	Frequent
<i>Potentilla fruticosa</i>	Shrubby Cinquefoil	Low Force and upstream
<i>Potentilla sterilis</i>	Barren Strawberry	Occasional
<i>Prunus padus</i>	Bird Cherry	Riverside nr Holwick Head
<i>Rosa caesia</i> subsp. <i>vosagiaca</i>	Glaucous Dog-rose	Bowlees Quarry
<i>Rubus fruticosus</i>	Bramble	Pennine Way
<i>Rubus ideaus</i>	Raspberry	Occasional
<i>Rubus saxatilis</i>	Stone Bramble	Bowlees
<i>Sanguisorba officinalis</i>	Great Burnet	Occasional
<i>Sorbus aria</i>	Whitebeam	High Force
<i>Sorbus aucuparia</i>	Rowan	Occasional
<i>Sorbus rupicola</i>	Rock Whitebeam	Low Force
Rubiaceae	Bedstraw Family	
<i>Cruciata laevipes</i>	Crosswort	Frequent
<i>Galium aparine</i>	Cleavers	Occasional
<i>Galium boreale</i>	Northern Bedstraw	Low force, Cery Bank Cronkley Bridge

Scientific Name	Common Name	
<i>Galium odoratum</i>	Sweet Woodruff	High Force
<i>Galium saxatile</i>	Heath Bedstraw	Pennine Way
<i>Galium sternerii</i>	Limestone Bedstraw	Cronkley Fell
<i>Galium verum</i>	Lady's Bedstraw	Occasional
Saliciaceae	Willow Family	
<i>Populus tremula</i>	Aspen	High Force
<i>Salix caprea</i> subsp. <i>sphacelata</i>	a Goat willow	Low Force
<i>Salix cinerea</i>	Grey Willow	Occasional
<i>Salix phylicifolia</i>	Tea-leaved Willow	Low Force, Cetry Bank, Cronkley Bridge
<i>Salix repens</i>	Creeping Willow	Low Force and Cetry Bank
Sapindaceae	Maple Family	
<i>Acer campestre</i>	Field Maple	Occasional
<i>Acer pseudoplatanus</i>	Sycamore	Frequent
Saxifragaceae	Saxifrage Family	
<i>Chrysosplenium oppositifolium</i>	Opposit-leaved Golden-saxifrage	Summer Force
<i>Saxifraga aizoides</i>	Yellow Saxifrage	Cetry Bank
<i>Saxifraga hypnoides</i>	Mossy Saxifrage	Cronkley Fell
Scrophulariaceae	Figwort Family	
<i>Scrophularia nodosa</i>	Figwort	High Force
Ulmaceae	Elm Family	
<i>Ulmus glabra</i>	Wych Elm	Occasional
Urticaceae	Nettle Family	
<i>Urtica dioica</i>	Common Nettle	Frequent
Valerianaceae	Valerian Family	
<i>Valeriana dioica</i>	Marsh Valerian	Widdybank Farm and Herdship
<i>Valeriana officinalis</i>	Valerian	High force
Veronicaceae	Speedwell Family	
<i>Digitalis purpurea</i>	Foxglove	Occasional
<i>Veronica beccabunga</i>	Brooklime	Low Force and Pennine Way
<i>Veronica chamaedrys</i>	Germander Speedwell	Frequent
<i>Veronica officinalis</i>	Heath Speedwell	Cetry Bank and Cronkley Fell
<i>Veronica serpyllifolia</i> subsp. <i>humifusa</i>	Thyme-leaved Speedwell	Cetry Bank and Cronkley Farm
Violaceae	Violet Family	
<i>Viola lutea</i>	Mountain Pansy	Occasional
<i>Viola riviniana</i>	Common Dog-violet	Low Force, Cronkley Fell, High Force
Monocots	Monocotyledons	
Amaryllidaceae	Daffodil Family	
<i>Allium ursinum</i>	Wild Garlic	Low Force, Summer Froce, High Force
Asparagaceae	Asparagus Family	
<i>Hyacinthoides non-scripta</i>	Bluebell	Frequent

Scientific Name**Common Name****Cyperaceae**

Blasmus compressus
Carex acutiformis
Carex capillaris
Carex demissa
Cares dioica
Carex echinata
Carex flacca
Carex hirta
Carex leporina
Carex panicea
Carex pulicaris
Carex sylvatica
Eriophorum angustifolium
Kobresia simpliciuscula
Trichophorum germanicum

Sedge Family

Flat Sedge Low Force and Cow Green Corner
 Lesser Pond Sedge Downstram from Holwick Head Bridge
 Hair Sedge Cronkley Fell
 Long-bracted Yellow-sedge Occasional
 Dioecious Sedge Widdybank Farm
 Star Sedge Occasional
 Glaucous Sedge Frequent
 Hairy Sedge Occasional
 Oval Sedge Pennine Way
 Carnation Sedge Frequent
 Flea Sedge Widdybank Farm, Cetry Bank, Cronkley Fell
 Wood Sedge Occasional
 Common Cottongrass Occasional
 False Sedge Widdybank Farm
 Deer Grass Widdybank Farm

Iridaceae

Iris pseudacorus

Iris Family

Yellow Iris Driving

Juncaceae

Juncus acutiformis
Juncus articulatus
Juncus bufonis
Juncus effusus
Juncus inflexus
Juncus squarrosus
Juncus triglumis
Luzula campestris
Luzula sylvatica

Rush Family

Sharp-flowered Rush Downstream from Holwich Head Bridge
 Jointed Rush Occasional
 Toad Rush Pennine Way
 Soft Rush Occasional
 Hard Rush
 Heath Rush Pennine Way and Cronkley Fell
 Three-flowered Rush
 Field Wood-rush Occasional
 Greater Wood-rush Occasional

Juncaginaceae

Triglochin palustris

Arrowgrass Family

Marsh Arrowgrass Cronkley Fell

Liliaceae

Lillium pyrenaicum
Narthecium ossifragum
Polygonatum x hybridum
Tofieldia pusilla

Lily Family

Pyrenean Lily Upstream from Low Force
 Bog Asphodel Widdybank Fell, Pennine Way, High Force
 Garden Solomon's -seal
 Scottish Asphodel Widdybank Farm and Cronkley Fell

Orchidaceae

Dactylorhiza fuchsii
Dactylorhiza incarnata ssp incarnata
Dactylorhiza maculata ssp ericetorum
Dactylorhiza purpurella
Dactylorhiza x venusta
Dactylorhiza x formosa
Gymnadenia borealis
Gymnadenia conopsea
Epipctis atrorubens
Epipctis heleborine
Listera ovata

Orchid Family

Common Spotted-orchid Frequent
 Early Marsh-orchid Widdybank Farm
 Heath Spotted-orchid Meadow near Low Force
 Northern Marsh-orchid Frequent
 Hybrid Orchid (D. fuschii x purpurella) Frequent
 Hybrid Orchid (D. maculata x purpurpella) Herdship
 Heath Fragrant-orchid Low Force, Widdybank Farm, Herdship, Bowlees
 Chalk Fragrant-orchid Widdybank Farm, Herdship, Bowlees
 Broad-leaved Heleborine Cronkey Fell
 Broad-leaved Heleborine Cronkey Fell
 Common Twayblade Occasional

Scientific Name**Common Name**

Platanthera bifolia
Platanthera chlorantha

Lesser Butterfly-orchid
 Greater Butterfly-orchid

Herdship
 Bowlees

Poaceae**Grass Family**

Alopecurus pratensis
Anthoxanthum odoratum
Briza media
Bromus hordeaceus
Bromopsis ramosa
Cynosorus cristatus
Dactylis glomerata
Deschampsia cespitosa
Glyceria fluitans
Holcus lanata
Holcus mollis
Lolium perenne
Melica uniflora
Nardus stricta
Poa annua
Sesleria caerulea
Trisetum flavescens

Meadow foxtail
 Sweet Vernal Grass
 Quaking Grass
 Soft-brome
 Hairy-brome
 Crested Dog's-tail
 Cock's-foot
 Tufted Hair-grass
 Floating Sweet-grass
 Yorkshire Fog
 Creeping Soft-grass
 Perennial Rye-grass
 Wood Melick
 Mat-grass
 Annual Meadow-grass
 Blue Moor-grass
 Yellow Oat-grass

Bowlees Quarry
 Frequent
 Frequent
 Cronkly Bridge
 Bowlees Quarry and High force
 Frequent
 Frequent
 Occasionl
 Low Force and Wat Garth
 Frequent
 Pennine Way
 Frequent
 High Force
 Frequent
 Occasionl
 Occasional
 Cetry Bank

Lichens

Rhizocarpon concentium
Rhizocarpon geographicum

Map Lichen

Cronkley Fell
 Cetry Bank

Birds (✓=recorded but not counted; H = heard only)

	Common name	Scientific name	June			
			22	23	24	25
1	Black Grouse	<i>Lyrurus tetrix</i>			17	
2	Red Grouse	<i>Lagopus lagopus</i>		✓	✓	
3	Common Pheasant	<i>Phasianus colchicus</i>	✓		✓	
4	Mallard	<i>Anas platyrhynchos</i>	✓		✓	✓
5	Eurasian Oystercatcher	<i>Haematopus ostralegus</i>	✓	✓	✓	
6	Northern Lapwing	<i>Vanellus vanellus</i>	✓	✓	✓	✓
7	European Golden Plover	<i>Pluvialis apricaria</i>			✓	
8	Whimbrel	<i>Numenius phaeopus</i>			✓	
9	Common Snipe	<i>Gallinago gallinago</i>	✓	✓	5+	
10	Eurasian Curlew	<i>Numenius arquata</i>	✓	✓	5+	
11	Common Redshank	<i>Tringa totanus</i>	✓			
12	Common Sandpiper	<i>Actitis hypoleucos</i>	✓	✓		✓
13	Dunlin	<i>Calidris alpina</i>				
14	Black-headed Gull	<i>Chroicocephalus ridibundus</i>	✓	✓	✓	✓
15	Lesser Black-backed Gull	<i>Larus fuscus</i>			✓	✓
16	Common Wood Pigeon	<i>Columba palumbus</i>	✓	✓	✓	✓
17	Eurasian Collared Dove	<i>Streptopelia decaocto</i>			2	
18	Common Swift	<i>Apus apus</i>	✓	✓	✓	✓
19	Eurasian Magpie	<i>Pica pica</i>			✓	
20	Western Jackdaw	<i>Coloeus monedula</i>	✓	✓	✓	✓
21	Hooded Crow	<i>Corvus cornix</i>	✓			
22	Carrion Crow	<i>Corvus corone</i>	✓	✓	✓	✓
23	Eurasian Blue Tit	<i>Cyanistes caeruleus</i>	✓			

	Common name	Scientific name	June			
			22	23	24	25
24	Eurasian Skylark	<i>Alauda arvensis</i>		✓	✓	✓
25	Barn Swallow	<i>Hirundo rustica</i>	✓	✓	✓	✓
26	Common House Martin	<i>Delichon urbicum</i>			✓	
27	Willow Warbler	<i>Phylloscopus trochilus</i>	H		✓	
28	Wood Warbler	<i>Phylloscopus sibilatrix</i>				✓
29	Eurasian Blackcap	<i>Sylvia atricapilla</i>				✓
30	Goldcrest	<i>Regulus regulus</i>	✓			
31	Ring Ouzel	<i>Turdus torquatus</i>			2	
32	Common Blackbird	<i>Turdus merula</i>	✓	✓	✓	✓
33	Mistle Thrush	<i>Turdus viscivorus</i>				✓
34	European Robin	<i>Erithacus rubecula</i>	✓	✓		✓
35	Spotted Flycatcher	<i>Muscicapa striata</i>	✓	✓	✓	✓
36	White-throated Dipper	<i>Cinclus cinclus</i>	2	✓		2
37	House Sparrow	<i>Passer domesticus</i>	✓	✓	✓	✓
38	Grey Wagtail	<i>Motacilla cinerea</i>	✓			
39	Pied Wagtail	<i>Motacilla alba yarrellii</i>		✓	✓	✓
40	Common Chaffinch	<i>Fringilla coelebs</i>	✓	✓		✓
41	European Goldfinch	<i>Carduelis carduelis</i>				2
42	Twite	<i>Linaria flavirostris</i>		✓		

Mammals

1	Rabbit	<i>Oryctolagus cuniculus</i>	✓	✓	✓	✓
2	European Hare	<i>Lepus europaeus</i>		5	✓	
3	Red Deer	<i>Cervus elaphus</i>				✓

Reptiles & Amphibians (T = Tadpoles)

1	Common Frog	<i>Rana temporaria</i>			✓	
2	Common Toad	<i>Bufo bufo</i>			T	

Butterflies

1	Large White	<i>Pieris brassicae</i>	✓			
2	Small White	<i>Pieris rapae</i>			✓	
3	Ringlet	<i>Aphantopus hyperantus</i>				✓
4	Dark Green Fritillary	<i>Argynnis aglaja</i>				✓
5	Small Heath	<i>Coenonympha pamphilus</i>			✓	

Moths (W = webs)

1	Bird Cherry Ermine Moth	<i>Yponomeuta evonymella</i>				W
2	Chimney Sweeper Moth	<i>Odezia atrata</i>	✓	✓	✓	

Other Invertebrates:

1	Shrimp				✓	
2	Water Beetle				✓	
3	Water Skater				✓	
4	Violet Ground Beetle	<i>Carabus violaceus</i>			✓	

Receive our e-newsletter

Join the Naturetrek e-mailing list and be the first to hear about new tours, additional departures and new dates, tour reports and special offers. Visit www.naturetrek.co.uk to sign up.

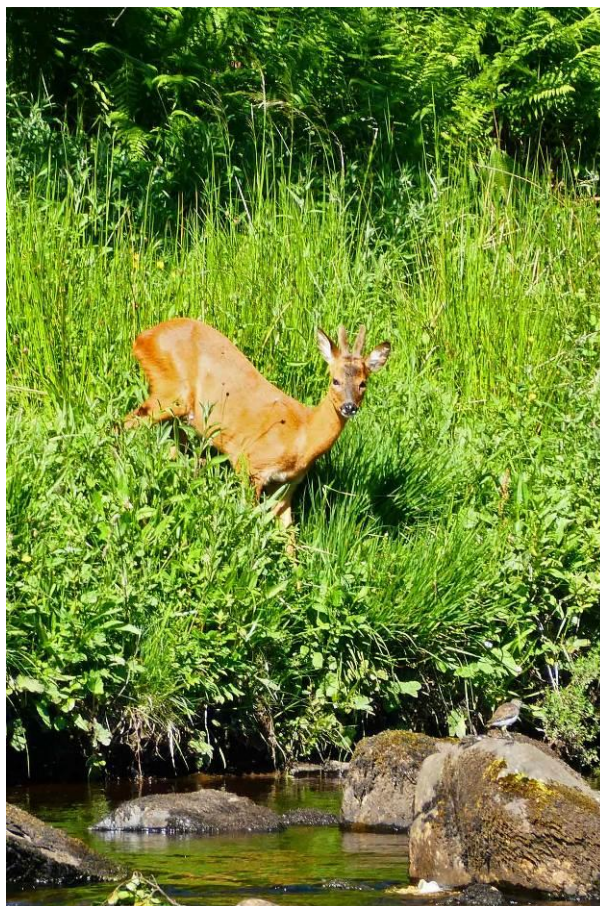
Naturetrek Facebook

We are delighted to launch the Naturetrek Facebook page so that participants of Naturetrek tours can remain in touch after the holiday and share photos, comments and future travel plans.

Setting up a personal profile at www.facebook.com is quick, free and easy. The [Naturetrek Facebook page](#) is now live; do please pay us a visit!



Chalk Fragrant Orchid (*Gymnadenia conopsea*)



Roe Deer and Common Sandpiper