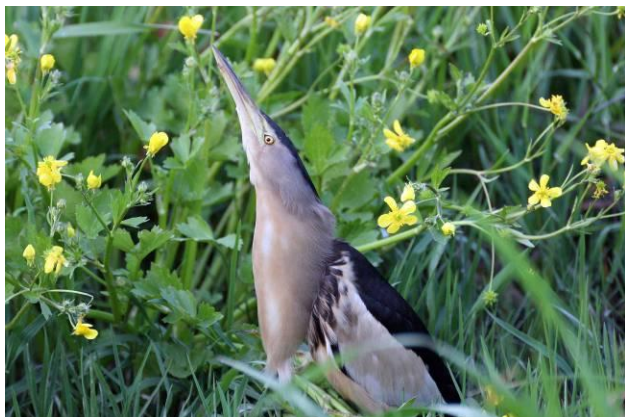


The Island of Samos

Naturetrek Tour Report

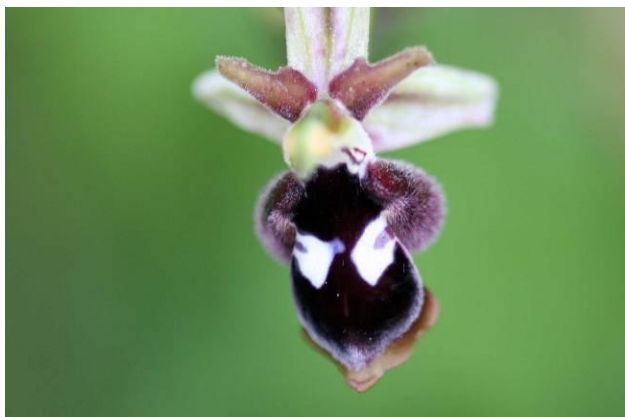
22 - 30 April 2011



Little Bittern (*Ixobrychus minutus*) - Sheila Palmer



Ophrys minutula (a Woodcock Orchid) - Sheila Palmer



Ophrys Reinholdii (Reinhold's Bee orchid) - Sheila Palmer



Samos Grayling (*Hipparchia mersina*) - Michael Skelton

Report compiled by Paul Harmes & Terry Goble



Naturetrek Cheriton Mill Cheriton Alresford Hampshire SO24 0NG England

T: +44 (0)1962 733051

F: +44 (0)1962 736426

E: info@naturetrek.co.uk

W: www.naturetrek.co.uk

Tour Leaders: Paul Harmes (Naturetrek Leader & Botanist)
Terry Goble (Naturetrek Leader & Ornithologist)

Participants: Jenny Griffiths
Hugh Griffiths
Sheila Palmer
Richard Reid
Michael Skelton
Naomi Ward
David Mason
Anita Wickens
Fred Wickens

Days 1 & 2

Friday 22nd – Saturday 23rd April

Fine, warm and sunny, with a breeze

Nine group members met Paul at Heathrow for the 22-15hrs Olympic Airlines flight to Athens. Having lost two hours with the change in time zones, it was not too long before we were able to join our Aegean Airlines flight to Samos, having previously joined up with Terry at international arrivals. We landed at the island's airport at 06-35hrs local time, and were met with the explosive welcome from a Cetti's Warbler. Having retrieved our luggage, we made our way to the car park to find our vehicles. Loading the bags into them, we set off for the hotel Astir in Karlovassi, which was to be our base for the next eight days. The journey took us about 45 minutes and we were greeted by Theo and his mother, our hosts. Rooms were quickly allocated and the travellers retired to their beds for a well earned siesta.

Suitably refreshed, the group boarded the minibus at 13-00hrs and we headed down to the west, past the harbour to the beach at Potami. The sky was clear with a fairly strong wind. Setting up our picnic by the beach, we soon noticed a few Yelkouan and Scopoli's Shearwaters a good distance out to sea. Common Swifts and Yellow-legged Gulls were also recorded. An Audouin's Gull was also picked out from a group of Yellow-legged Gulls loafing on the beach.

After lunch, we set off on our first walk to the Potami waterfall. However, it was not long before the first meadow attracted our attention, with butterflies including Eastern Dappled White, Eastern Festoon, Scarce Swallowtail and Orange Tip. There were also a number of plants new to the group. Amongst the grass we found *Ophrys episcopalis* (Large-flowered Bee Orchid) and *Ptilostemon chamaepeuce* (Shrubby Ptilostemon), *Scrophularia heterophylla* (a Figwort), *Ophrys oestifera* (a Woodcock Orchid) and *Papaver apulum* (a Poppy). A little further on, we spotted *Allium subhirsutum* (Hairy Garlic), together with *Pistacia lentiscus* (Mastic Tree). The path up to the waterfall gave us our first glimpse of the Starred Agama Lizard rapidly disappearing into gaps in the walls. *Orobancha hederea* (Ivy Broomrape) was found and Sardinian Warbler and Wren were heard.

After returning to the hotel we made the short excursion into the series of vineyards and vegetable fields which lay just behind the hotel. Woodchat Shrike, Yellow Wagtail, a pair of Whinchat and Squacco Heron, were among the birds seen. By 18-00hrs the effects of the overnight flight had begun to tell, so we headed back to the hotel to prepare for dinner.

Day 3

Sunday 24th April

Windy, but fine and sunny

A small group gathered at 06-50hrs to check the vineyards and vegetable fields at the side of the hotel for morning migrants. Woodchat Shrike, Nightingale, Whinchat and Wood Sandpiper were all recorded.

Following our continental breakfast we loaded the minibus and headed south towards Pyrgos, where we climbed into the Ambelos Mountains. We made a stop on the main road, just west of Pyrgos, finding *Anchusa azurea* (Large Blue Alkanet) and two species of *Cistus*: *Cistus salvifolius* (Sage-leaved Cistus) and *Cistus parviflorus* (Small-Flowered Cistus), *Ophrys oestriifera* (a Woodcock Orchid) and *Lithodora zabini* (Greek Gromwell). Birds seen were Sardinian Warbler and Eleanor's Falcon.

Moving on, we made a second stop overlooking an olive grove. Masked Shrike, European Bee Eater and Cretzschmar's Bunting were all seen well, and *Silene dichotoma* (Branched Catchfly) and *Muscari comosum* (Tassel Hyacinth) also recorded. Leaving Pyrgos we travelled up towards Pandroso, making a third stop in an area of *Cistus* scrub. *Vicia lutea* (Yellow vetch), *Orchis morio* (Green-winged Orchid) and *Orchis anatolica* (Anatolian Orchid) and *Serapias vomeracea* (Plough-share Tongue Orchid) were added to our growing list of plant species. As we were leaving, we were treated to the unusual sight of a Quail running along the margin of the road, completely out in the open, which was enjoyed by all of us.

We then we started to climb the dirt track towards Profitis Ilias, the second highest point on the island at 1,154m. Most of the area was now regenerating scrub, following a disastrous fire in the autumn of 2001. Prior to this, the hillside had been mature *Pinus brutia* (Greek pine) forest. Short stops produced Black-eared Wheatear, Cretzschmar's Bunting and singing Nightingales as well as the large spreading clumps of *Trifolium uniflorum* (One-flowered Clover), *Iberis spurneri* (a Candytuft) and *Lathyrus gorgonei* (an Orange Pea).

We reached the small area of trees below the summit where we found excellent picnic tables for our lunch stop. We took time to enjoy this before starting to explore the area further. Chaffinch and Common Crossbill were added to the bird list. Exploring the area produced Ruppells and Subalpine warblers. Plants included emerging *Orchis anatolica* (Anatolian Orchid). Venturing above the tree line, we found *Aethionema saxatile* (Burnt Candytuft), *Iris attica*, *Fritillaria conica* and *Acantholimon androsaceum*. On the insect front we saw Eastern Festoon, Common Blue and Painted Lady Butterflies and Egyptian Grasshopper. Black-eared Wheatear and Common Kestrel also put in an appearance. Suitably satisfied, we returned to the vehicles about 4pm and started the descent. Just as we were leaving a Wryneck flew over the picnic area into a patch of woodland. We arrived back at the hotel at 1700hrs where a cool beer or tea was the order of the day for some, and a quick visit to the fields to check for migrants for others – the latter finding Spur-winged Plover and Ruff.

Day 4

Monday 25th April

Fine, sunny and warm

The 7am bird walk to check the fields near the hotel found Eastern Olivaceous Warbler, Wood Sandpiper, Squacco Heron and Woodchat Shrike. Also a solitary Barred Warbler was identified. Plants included *Equisetum ramosissimum* (Boston Branched? Horsetail), and *Clematis cirrhosa* (Maiden's Bower).

After breakfast, we headed east along the north coast and then south, past Samos Town to the Alyki Wetlands at Psili Ammos. We parked near the old salt works, and were immediately confronted by a Ruddy Shelduck, perched on an old piece of machinery. These birds breed by the lake, and was not too long before several took flight and flew around calling. Also on the lake margins there were a Little Egret, Black-winged Stilt, Wood Sandpiper and a fine pair of White-winged Terns. Overhead we identified Swallow, Sand Martin, Red-rumped Swallow, Swift and Pallid Swift and spotted a Little Owl on the ruined buildings around the lake, one of several we saw around the Island. Meanwhile the botanists and entomologists were hard at work and among the rich array of flora they had found *Limonium sinuatum* (Winged Sea Lavender), the leaves of *Arum dioscoridis*, *Parentucellia viscosa* (Yellow Bartsia) and *Serapias orientalis* (a Tongue Orchid). Moving onto the sandy foreshore, we added *Silene colorata*, *Thymus capitata* (Capitate Thyme), *Juniperus phoeniceus* (Phoenician Juniper). Also, on the beach, we watched a Tawny Pipit, Greater Short-toed Lark, Crested Lark and, the ever present Yellow-legged Gull. Aegean Meadow Brown, Clouded Yellow, Eastern Bath White, Lulworth Skipper and Brown Argus were also added to the butterfly list.

We took our picnic by the old Salt works, before moving off in a westward direction, parking on the beach at Mykali. At Mykali, we explored an area of semi-saline fields, some of which showed signs of having been cultivated in the past. *Ophrys bombyliflora* (Bumblebee Orchid), *Ophrys apifera* (Bee Orchid) and *Orobancha crenata* were among the flowers found. The invertebrates included Swallowtail and Clouded Yellow butterflies and Carpenter Bee. For the birds, we saw Blackcap, three Red-footed Falcons, Greater Short-toed Lark and Purple Heron, and heard Reed Warbler.

We now made our way back to Karlovassi, where, after some refreshments, we again went out to explore the area behind the hotel. Mixed Yellow Wagtails, Common Sandpiper, Barred Warbler and Whinchat were all seen.

Day 5

Tuesday 26th April

Fine and sunny with light showers later

The early morning bird walk added nothing new to the list, but good views of Whitethroat and Eastern Olivaceous Warbler were had. After breakfast, we headed for the village of Ydroussa, a few kilometres inland, to the east of Karlovassi. Parking the minibuses in the town car park, we shared the picnic out and started along the track toward the village of Kondieka. The path took us past olive groves, some which had, unfortunately, been sprayed with herbicides, but others were rich in flowers. Early finds were *Ophrys mammosa* (an Early Spider Orchid) and *Gladiolus italicus* (Field Gladiolus). Sardinian Warblers and Chaffinch made their presence known as we progressed. Butterflies began to appear: mainly Large Whites to begin with, but we soon added Eastern Festoon, Orange Tip and Aegean Meadow Brown. In a stand of pines, we found *Limadonum abortivum* (Violet Bird's-nest Orchid) and had good views of Pied Flycatcher. Paul also found a Snake-eyed Skink.

Our picnic lunch was taken in an olive grove, during which Eastern Festoon Butterfly, Short-toed Eagle and a Long-legged Buzzard were seen. As we moved into the afternoon, we added Turtle Dove, Collard and Spotted Flycatcher. Additional plants included *Dracunculus vulgaris* (Dragon Arum) and *Origanum heracleoticum*. We now made our way back to Ydrousa, where we stopped for refreshments before returning to our hotel.

The afternoon walk through the market gardens and down to the stream produced the now familiar Eastern Olivaceous Warbler, Wood Sandpiper, Squacco Heron and Woodchat Shrike. It also revealed that our solitary Spur-winged Lapwing now had a mate.

Day 6

Wednesday 27th April

Cloudy with prolonged heavy showers

After breakfast we set off on the road towards Pythagorio. At Hora we turned north up toward Mytilinii, stopping once again to explore a small valley which, as it lies on a north to south line, channels migrating birds to the north side of the island. We saw Eleanora's Falcon and Cretzschmar's Bunting and also found *Orchis italica* (Naked Man Orchid) and *Satureja thymbra* (a Savoury). Continuing on towards Mytilinii, we took a right hand turn-off towards Agias Triadas. This area is a small valley above Pythagorio and had many cultivated and meadow fields, some of which were ablaze with *Gladiolus italicus* (Field Gladiolus), *Allium nigrum* and *Ranunculus arvensis* (Corn Buttercup). In an adjacent field to where we had stopped, there was a large bush with a co-operative Corn Bunting was singing from the top of it and Crested Lark was also noted. This valley has come to be known as the 'Roller Valley', but this year we were a little too early to see these spectacular birds.

By now the weather had taken a turn for the worse, and we had very heavy rain, so Paul and Terry took the group into Pythagoria for lunch at an excellent Pizzeria. After lunch we had a short time to look around the town. By early/mid afternoon, the rain stopped, so we made our way back to the monastery in order to explore the area, finding *Ophrys oestrifera* (Horned Ophrys), *Myrtis communis* (Myrtle) and *Bellevalia trifoliata*. Turtle Dove Pied Flycatcher, Spanish Sparrow and Short-toed Eagle were also seen.

From here, we made our way back to Karlovassi for dinner. On the way, we stopped to watch a Long-legged Buzzard perch on a tree, until mobbed by a Hooded Crow.

Day 7

Thursday 28th April

Dull and wet with the odd dry spell

Today's early bird walk added Willow Warbler and Wood Warbler to the list.

After a good breakfast, we each packed a lunch and we headed north-west past the harbour to Potami where we left our vehicles and started our walk towards the Seitani bays. As we were leaving the area, we spotted a Giant Peacock Moth at rest in an uncovered manhole. After everyone had taken pictures of Europe's largest moth, we set off to explore the coastal paths, tracks and olive groves. We began by finding several naturalised specimens of *Cupressus macrocarpa* (Monterey Cypress), *Lotus ornithopodioides* (a Bird's-foot Trefoil) and the emerging spikes of *Silene gigantea* (Giant Catchfly).

Blackbird and Sardinian Warbler, Yellow-legged Gull and a solitary Raven were also noted. By now the rain had become quite persistent, so we turned around and made our way back to Potami. During our walk back to Potami, Chaffinch, Great Tit and Willow Warbler were regularly heard, but little else was recorded. Plants, however, were interesting with a number of orchid species seen, including *Ophrys sicula* (a Yellow Bee Orchid). We also saw *Gladiolus italicus* (Field Gladiolus), *Euphorbia dendroides* (Tree Spurge), *Anogramma leptophylla* (Jersey Fern) and *Calycotome villosa*. We made our way slowly back to Potami and rejoined the vehicles for the return journey to the hotel, where we ate our picnic lunches.

In the afternoon, it was still raining heavily, so a small group set out to investigate some potential new areas, while others chose to stay behind. Leaving Karlovassi, we made our way up towards Leka and Kastania, eventually finding an interesting verge on a small quiet road. Tawny Owl and Chukar Partridge were seen, with Subalpine Warbler and Nightingale adding the background chorus. The plant highlight was *Ophrys reinholdii* (Reinhold's Bee Orchid).

Day 8

Friday 29th April

Misty at first, becoming fine, sunny and hot

Our last full day on the island started again with a 7am walk. Great Reed Warbler, Sedge Warbler and Barred Warbler were all recorded as well as five Squacco Herons.

After breakfast, we headed south west towards Marathokambos. Our first stop was on the top of a hill where we searched for plants. We not disappointed, finding *Ophrys sicula* (Yellow Bee Orchid), *Neotostema apulum* (Yellow Gromwell), *Cytinus hypocistus* (Cytinus) and *Muscari neglectum* (Grape Hyacinth), and our first Robin of the trip was recorded.

We continued down to the south coast then turned west towards Kambos and Votsalakia, and it was just west of this last village we made our second stop in an area of coastal olive groves. Spotted Flycatcher, Olive Tree Warbler, Bee Eater and Alpine swift were all seen, and Samos Grayling, Clouded Yellow and Small White Butterfly also. Continuing on past Limnionas to a higher level, we stopped in another area of olive groves, on the lower slopes of Mount Kerketeas in the hope of finding some more newly arrived migrants. Eleanora's Falcon and Bonelli's Eagle were early sightings for the birders, and for the botanists there was *Linum strictum*, *Anacamptis pyramidalis* (Pyramidal Orchid), *Onosma graeca* (Golden Drops), *Orchis sancta* (Holy Orchid), *Orchis fragrans* (Fragrant Bug Orchid) and *Ophrys minutula* (a Woodcock Orchid). Just before we took lunch, Naomi and David reported a fleeting glimpse of a secretive Golden Jackal crossing a deserted part of a track.

After our meal we drove back down to Limnionas and retraced our steps to Marathokambos, where we took the road towards Kastania. We stopped on a quiet roadside just south of the town, where we found *Ophrys reinholdii* (Reinhold's Bee Orchid) and *Saxifraga hederacea*, as well as hearing Nightingale and Tawny Owl.

From here we descend to Karlovassi and back to our hotel, for refreshments, before heading out on our evening local walk. Tonight we found Little Bittern, Black-crowned Night Heron and Little Ringed Plover.

Day 9

Saturday 30th April

Fine, sunny and warm

After breakfast, we took a leisurely walk down behind the hotel. Birds included a mixed flock of Yellow Wagtails, Sardinian Warbler, Eastern Olivaceous Warbler, five Squacco Herons and wonderful flock of Black-headed Buntings, which posed long enough for all to get a good view. Eastern Festoon and Swallowtail butterflies were also seen.

After packing and an early lunch, we bid farewell to Theo and his mother, thanking them for their hospitality during our stay, before making our way to the airport for our flight to Athens and onward to Heathrow.

Receive our e-newsletter

Join the Naturetrek e-mailing list and be the first to hear about new tours, additional departures and new dates, tour reports and special offers. Visit www.naturetrek.co.uk to sign up.

Naturetrek Facebook

We are delighted to launch the Naturetrek Facebook page so that participants of Naturetrek tours can remain in touch after the holiday and share photos, comments and future travel plans.

Setting up a personal profile at www.facebook.com is quick, free and easy. The [Naturetrek Facebook page](#) is now live; do please pay us a visit!

Species Lists

Plants

Scientific name	Common name	Location
PTERIDOPHYTES	FERNS & ALLIES	
Selaginellaceae <i>Selaginella denticulata</i>	Lesser Clubmoss Family Mediterranean Clubmoss	Potami
Equisetaceae <i>Equisetum ramosissimum</i> <i>Equisetum telmateia</i>	Horsetail Family Branched Horsetail Giant Horsetail	Karlovassi Potami
Adiantaceae <i>Anogramma leptophylla</i>	Maidenhair Fern Family Jersey Fern	West of Potami
Aspleniaceae <i>Ceterach officinarum</i>	Spleenwort family Rustyback	West of Potami
Dennstaedtiaceae <i>Pteridium aquilinum</i>	Bracken Family Bracken	Karlovassi
Polypodiaceae <i>Polypodium cambricum</i>	Polypody Family Southern Polypody	Potami
PINOPSIDA	CONIFERS	
Cupressaceae <i>Cupressus macrocarpa</i> <i>Cupressus sempervirens</i> <i>Juniperus oxycedrus</i> <i>Juniperus phoenicea</i>	Juniper Family Monterey Cypress Italian Cypress Prickly Juniper Phoenician Juniper	West of Potami Common West of Potami Potami
Pinaceae <i>Pinus brutia</i>	Pine Family Greek Pine	Mount Ambelos
MAGNOLIOPSIDA	FLOWERING PLANTS	
Magnoliidae (Dicotyledons)		
Acanthaceae <i>Acanthus spinosus</i>	Bear's-breech Family Spiny Bear's-breech	Karlovassi
Aizoaceae <i>Carpobrotus acinaciformis</i>	Dewplant Family Sally-my-handsome	Karlovassi
Anacardiaceae <i>Pistacia lentiscus</i> <i>Pistacia terebinthus</i>	Sumach Family Mastic Tree Turpentine Bush	Potami Potami
Apiaceae <i>Ammi visnaga</i>	Carrot Family -	West of Potami

Scientific name	Common name	Location
<i>Bupleurum rotundifolium</i>	Thorowax	Fields near Monastery of Triadas
<i>Crithmum maritimum</i>	Rock Samphire	West of Potami
<i>Daucus carota</i>	Wild Carrot	West of Potami
<i>Elaeoselinum asclepium</i>	-	North of Limnionas
<i>Eryngium campestre</i>	Field Eryngo (seedheads)	West of Potami
<i>Ferula communis</i>	Giant Fennel	Potami
<i>Lagoecia cumiboides</i>	Lagoecia	West of Potami
<i>Orlaya grandiflora</i>	-	West of Potami
<i>Scandix australis</i>	a Shepherd's-needle	West of Potami
<i>Smyrniium perfoliatum</i>	Perfoliate Alexanders	Potami
<i>Thapsia garganica</i>	Thapsia	Psili Amos
<i>Tordylium apulum</i>	Tordylium	Potami
<i>Tordylium officinale</i>	-	North of Limnionas
<i>Torilis nodosa</i>	Knotted Bur-parsley	Potami
Aristolochiaceae	Birthwort Family	
<i>Aristolochia hirta</i>	A Birthwort	Ambelos mountains
Asteraceae	Daisy Family	
<i>Anthemis chia</i>	-	Karlovassi
<i>Anthemis rigida</i>	Rayless Chamomile	Mykili
<i>Bellis annua</i>	Annual Daisy	Ambelos mountains
<i>Bellis sylvestris</i>	Southern daisy	Potami
<i>Carduus pycnocephalus</i>	Plymouth Thistle	Potami
<i>Carduus tenuiflorus</i>	Slender Thistle	West of Potami
<i>Centaurea cyanus</i>	Cornflower	Ambelos mountains
<i>Cichorium intybus</i>	Chicory	West of Potami
<i>Dittrichia viscosus</i>	Stink Aster	Psili Amos
<i>Doronicum orientale</i>	Heart-leaved Leopard's-bane	Ambelos mountains
<i>Glebionis coronarium</i> var. <i>coronarium</i>	Crown Daisy	Potami
<i>Glebionis coronarium</i> var. <i>discolor</i>	Crown Daisy	Potami
<i>Glebionis segetum</i>	Corn Marigold	North of Pyrgos
<i>Helichrysum orientale</i>	An Everlasting	Potami
<i>Hyoseris radiata</i>	Hyoseris	Potami
<i>Pallenis spinosa</i>	Pallenis	West of Potami
<i>Phagnalon rupestre</i>	Phagnalon	West of Potami
<i>Ptilostemon chamaepeuce</i>	Shrubby Ptilostemon	Potami
<i>Rhagadiolus stellatus</i>	Star Hawkbit	Potami
<i>Silybum marianum</i>	Milk Thistle	Karlovassi
<i>Sonchus oleraceus</i>	Smooth Sow-thistle	Karlovassi
<i>Tragopogon hybridum</i>	A Goat's-beard	Ambelos mountains
<i>Urospermum picroides</i>	a Urospermum	Potami
Boraginaceae	Borage Family	
<i>Alkanna lehmanii</i>	Dyer's Alkanet	West of Potami
<i>Anchusa azurea</i>	Large Blue Alkanet	West of Pyrgos
<i>Anchusa undulata</i> subsp. <i>hybrida</i>	Undulate Anchusa	Psili Amos
<i>Cerinthe major</i>	Greater Honeywort	Potami
<i>Echium italicum</i>	Pale Viper's-bugloss	West of Potami
<i>Echium plantagineum</i>	Purple Viper's-bugloss	Karlovassi
<i>Lithodora hispidula</i>	-	North of Limnionas
<i>Lithodora zahnii</i>	-	Roadside near Karlovassi

Scientific name	Common name	Location
<i>Neatostema apulum</i>	Yellow Gromwell	North of Marathokambos
<i>Onosma graeca</i>	Golden Drops	North of Limnionas
<i>Procopiana cretica</i>	Procopiana	Potami
Brassicaceae	Cabbage Family	
<i>Aethionema saxatile</i>	Burnt Candytuft	Ambelos mountains
<i>Arabis verna</i>	Spring Rock-cress	Ambelos mountains
<i>Aubrietia deltoidea</i>	Aubrietia	Ambelos mountains
<i>Biscutella didyma</i>	Buckler Mustard	West of Potami
<i>Brassica nigra</i>	Black Mustard	Ydoussa
<i>Brassica oleracea</i> subsp. <i>robertiana</i>	Wild Cabbage	Potami
<i>Cakile maritima</i>	Sea Rocket	Psili Amos
<i>Capsella bursa-pastoris</i>	Shepherd's Purse	Karlovassi
<i>Eruca sativa</i>	-	Ydoussa
<i>Hirschfeldia incana</i>	Hoary Mustard	Fields near Triadas Monastery
<i>Iberis spurneri</i>	A Candytuft	Ambelos mountains
<i>Lepidium draba</i>	Hoary Cress	Karlovassi
<i>Malcolmia maritima</i>	Virginia Stock	Potami
<i>Matthiola tricuspidata</i>	Three-horned Stock	Potami
<i>Raphanus raphanistrum</i>	Radish	Ydoussa
<i>Sinapis arvensis</i>	Charlock	Karlovassi
<i>Sisymbrium officinale</i>	Hedge Mustard	Ydoussa
Capparidaceae	Caper Family	
<i>Capparis spinosa</i>	Caper	Karlovassi
Campanulaceae	Bellflower Family	
<i>Campanula</i> c.f. <i>hagielia</i>	-	Potami
<i>Legousia pentagonia</i>	-	Psili Amos
Caprifoliaceae	Honeysuckle Family	
<i>Lonicera etrusca</i>	Etruscan Honeysuckle	West of Potami
<i>Sambucus nigra</i>	Elder	Karlovassi
Caryophyllaceae	Pink Family	
<i>Agrostemma githago</i>	Corn Cockle	Ydoussa
<i>Petrorhagia velutina</i>	Kohlrauschia	Potami
<i>Polycarpon tetraphyllum</i>	Four-leaved Allseed	Karlovassi
<i>Silene colorata</i>	-	Psili Amos
<i>Silene dichotoma</i>	Branched Catchfly	Common on Roadsides
<i>Silene gallica</i> var. <i>gallica</i>	Small-flowered Catchfly	Potami
<i>Silene gallica</i> var. <i>quinquevulnera</i>	Small-flowered Catchfly	Psili Amos
<i>Silene gigantea</i>	Giant Catchfly	West of Potami
<i>Silene italica</i>	Italian Catchfly	West of Potami
<i>Silene sedoides</i>	-	West of Potami
<i>Silene vulgaris</i>	Bladder Campion	Fields near Triadas Monastery
<i>Spergularia marina</i>	Lesser Sea-spurrey	Psili Amos
Chenopodiaceae	Goosefoot Family	
<i>Atriplex portulacoides</i>	Sea Purslane	Mykili
<i>Beta vulgaris</i> subsp. <i>maritima</i>	Sea Beet	Psili Amos
<i>Chenopodium album</i>	Fat Hen	Karlovassi

Scientific name	Common name	Location
<i>Sarcocornia perennis</i>	Perennial Glasswort	Mykili
Cytinaceae	Cytinus Family	
<i>Cytinus hypocistus</i>	Cytinus	Ydoussa
Cistaceae	Cistus Family	
<i>Cistus creticus</i>	Pink Cistus	Roadside near Pyrgos
<i>Cistus parviflorus</i>	Small-flowered Cistus	Roadside near Pyrgos
<i>Cistus salvifolius</i>	Sage-leaved Cistus	Roadside near Pyrgos
<i>Fumana thymifolia</i>	Fumana	West of Votsalakia
Clusiaceae	St. John's-wort Family	
<i>Hypericum empetrifolium</i>	-	Potami
<i>Hypericum perforatum</i>	Perforate St. John's-wort	West of Potami
Convolvulaceae	Bindweed Family	
<i>Convolvulus althaeoides</i>	Mallow-leaved Convolvulus	Psili Amos
<i>Convolvulus arvensis</i>	Field Bindweed	Karlovassi
<i>Cuscuta epithymum</i>	Dodder	Triadas Monastery
Crassulaceae	Stonecrop Family	
<i>Rosularia serrata</i>	-	Potami
<i>Sedum sediforme</i> (leaves)	a Stonecrop	West of Potami
<i>Sedum sexangulare</i>	Tasteless Stonecrop	Potami
<i>Umbilicus parviflora</i>	-	West of Potami
<i>Umbilicus rupestris</i>	Wall Pennywort	Karlovassi
Cucurbitaceae	Gourd Family	
<i>Ecballium elaterium</i>	Squirting Cucumber	North of Hora
Dipsacaceae	Teasel Family	
<i>Pterocephalus plumosus</i>	Annual Pterocephalus	Potami
Ericaceae	Heather Family	
<i>Arbutus unedo</i>	Strawberry Tree	West of Potami
Euphorbiaceae	Euphorbia Family	
<i>Euphorbia acanthothamnus</i>	Greek Spiny Spurge	North of Hora
<i>Euphorbia characias</i> subsp. <i>characias</i>	Large Mediterranean Spurge	West of Potami
<i>Euphorbia helioscopia</i>	Sun Spurge	Ydoussa
<i>Euphorbia peplus</i>	Petty Spurge	Potami
<i>Mercurialis annua</i>	Annual Mercury	West of Potami
Fabaceae	Pea Family	
<i>Anagyris foetida</i>	Bean Trefoil	Karlovassi
<i>Anthyllis tetraphylla</i>	Bladder Vetch	West of Potami
<i>Bitumaria bituminosa</i>	Pitch Trefoil	Potami
<i>Calycotome villosa</i>	Hairy Thorny Broom	Common on Roadsides
<i>Ceratonia siliqua</i>	Carob or Locust Tree	West of Potami
<i>Cercis siliquastrum</i>	Judas Tree	Potami
<i>Coronilla scorpioides</i>	Annual Scorpion Vetch	Triadas Monastery
<i>Coronilla valentina</i> subsp. <i>glauca</i>	Scorpion Vetch	Triadas Monastery

Scientific name	Common name	Location
<i>Genista acanthoclada</i>	-	West of Potami
<i>Hippocrepis unisiliquosa</i>	-	West of Potami
<i>Lathyrus anuus</i>	Annual Vetchling	Psili Amos
<i>Lathyrus cicera</i>	-	Ambelos mountains
<i>Lathyrus gorgonei</i>	-	Mykili
<i>Lathyrus hirsutus</i>	Hairy Vetchling	Mykili
<i>Lathyrus setifolius</i>	-	Ambelos mountains
<i>Lupinus angustifolius</i>	Narrow-leaved Lupin	North of Pyrgos
<i>Medicago arborea</i>	Tree Medick	Roadside near Karlovassi
<i>Medicago orbicularis</i>	Disc Medick	Ambelos mountains
<i>Melilotus altissimus</i>	Tall Melilot	Triadas Monastery
<i>Melilotus indicus</i>	Small Melilot	Potami
<i>Onobrychis aequidentata</i>	-	Fields near Triadas Monastery
<i>Onobrychis caput-galli</i>	Cockscomb Sainfoin	Ambelos mountains
<i>Robinia pseudacacia</i>	False Acacia	Potami
<i>Scoparius muricatus</i>	Scorpion Vetch	Near Karlovassi
<i>Securigera cretica</i>	-	Ambelos mountains
<i>Spartium junceum</i>	Spanish Broom	Common
<i>Trifolium campestre</i>	Hop Trefoil	West of Potami
<i>Trifolium cherleri</i>	-	Psili Amos
<i>Trifolium clypeatum</i>	Shield Clover	Potami
<i>Trifolium hybridum</i>	Alsike Clover	Karlovassi
<i>Trifolium repens</i>	White Clover	Karlovassi
<i>Trifolium resupinatum</i>	Reversed Clover	Karlovassi
<i>Trifolium scabrum</i>	Rough Clover	Potami
<i>Trifolium stellatum</i>	Starry Clover	Potami
<i>Trifolium tomentosum</i>	Woolly Clover	North of Pyrgos
<i>Trifolium uniflorum</i>	One-flowered Clover	Ambelos mountains
<i>Trigonella graeca</i>	a Fenugreek	Potami
<i>Vicia bithynica</i>	Bithynian Vetch	Ydoussa
<i>Vicia hybrida</i>	Hairy Yellow Vetchling	Karlovassi
<i>Vicia sativa subsp. segetalis</i>	Common Vetch	Potami
<i>Vicia villosa</i>	Fodder Vetch	Ydoussa
Fagaceae	Beech Family	
<i>Quercus coccifera</i>	Kermes Oak	Ambelos mountains
<i>Quercus ilex</i>	Holm Oak	Ydoussa
<i>Quercus pubescens</i>	Downy Oak	Ydoussa
Fumariaceae	Fumitory Family	
<i>Fumaria parviflora</i>	Small-flowered Fumitory	Karlovassi
Gentianaceae	Gentian family	
<i>Blackstonia perfoliata</i>	Yellow-wort	West of Potami
Geraniaceae	Geranium Family	
<i>Erodium cicutarium</i>	Common Stork's-bill	Potami
<i>Erodium gruinum</i>	Long-beaked Stork's-bill	Potami
<i>Erodium malacoides</i>	Mallow-leaved Stork's-bill	Potami
<i>Geranium dissectum</i>	Cut-leaved Crane's-bill	Potami
<i>Geranium lucidum</i>	Shining Crane's-bill	Karlovassi
<i>Geranium molle</i>	Dove's-foot Crane's-bill	Karlovassi

Scientific name	Common name	Location
<i>Geranium purpureum</i>	Little Robin	Ambelos mountains
<i>Geranium rotundifolium</i>	Round-leaved Crane's-bill	Potami
Juglandaceae	Walnut Family	
<i>Juglans regia</i>	Walnut	Common
Lamiaceae	Dead-nettle Family	
<i>Ballota acetabulosa</i>	Garden Horehound	Potami
<i>Lamium amplexicaule</i>	Henbit	Karlovassi
<i>Lamium bifidum</i>	-	Potami
<i>Lamium purpureum</i>	Red Deadnettle	Karlovassi
<i>Lavandula stoechas</i>	French Lavender	West of Votsalakia
<i>Origanum heracleoticum</i>	a Marjoram	West of Potami
<i>Phlomis fruticosa</i>	Jerusalem Sage	West of Pyrgos
<i>Prasium majus</i>	Prasium	Potami
<i>Salvia fruticosa</i>	Three-leaved Sage	Common on roadsides
<i>Salvia verbanaca</i>	Wild Clary	Ambelos mountains
<i>Satureja thymbra</i>	Satureja	North of Hora
<i>Sideritis lanata</i>	-	West of Potami
<i>Teucrium polium</i> agg.	Felty Germander	West of Potami
<i>Thymus capitatus</i>	Capitate Thyme	North Limnionas
<i>Thymus longicaulis</i>	a Thyme	West of Potami
Lauraceae	Laurel Family	
<i>Laurus nobilis</i>	Sweet Bay	Potami
Linaceae	Flax Family	
<i>Linum bienne</i>	Pale Flax	Potami
<i>Linum nodiflorum</i>	-	North of Limnionas
<i>Linum strictum</i>	-	North of Limnionas
Malvaceae	Mallow Family	
<i>Althaea hirsuta</i>	Hairy Mallow	West of Potami
<i>Lavatera cretica</i>	Small Tree Mallow	Potami
<i>Malva sylvestris</i>	Common Mallow	Potami
Meliaceae	Persian Lilac Family	
<i>Melia azedarach</i>	Indian Bead Tree	Planted
Moraceae	Fig Family	
<i>Ficus carica</i>	Fig	Common
Myrtaceae	Myrtle family	
<i>Eucalyptus camaldulensis</i>	River Red Gum	Planted
Nyctaginaceae	Bougainvillea Family	
<i>Bougainvillea glabra</i>	Bougainvillea	Planted
Oleaceae	Olive Family	
<i>Olea europaea</i>	Olive	Common

Scientific name	Common name	Location
Orobanchaceae	Broomrape Family	
<i>Orobanche caryophyllaea</i>	Clove-scented Broomrape	Mykili
<i>Orobanche crenata</i>	a Broomrape	Mykili
<i>Orobanche hederaceae</i>	Ivy Broomrape	Potami
<i>Orobanche minor</i>	Common Broomrape	Potami
<i>Orobanche ramosa</i>	Branched Broomrape	Potami
Oxalidaceae	Oxalis Family	
<i>Oxalis pes-caprae</i>	Bermuda Buttercup	Common
Papaveraceae	Poppy Family	
<i>Glaucium flavum</i>	Yellow-horned Poppy	Potami
<i>Papaver apulum</i>	-	Common
<i>Papaver hybridum</i>	Rough Poppy	Fields near Triadas Monastery
Pittosporaceae	Pittosporum Family	
<i>Pittosporum tobria</i>	Pittosporum	Planted
Plantaginaceae	Plantain Family	
<i>Plantago afra</i>	-	West of Potami
<i>Plantago coronopus</i>	Stag's-horn Plantain	Mykili
<i>Plantago lagopus</i>	Hare's-tail Plantain	Potami
<i>Plantago lanceolata</i>	Ribwort Plantain	Ydoussa
<i>Plantago major</i>	Greater Plantain	Karlovassi
Platanaceae	Plane Tree Family	
<i>Platanus orientalis</i>	Plane Tree	Ydoussa
Plumbaginaceae	Thrift Family	
<i>Acantholimon androsaceum</i>	-	Ambelos mountains
<i>Limonium sinuatum</i>	Winged Sea Lavender	Mykili
Polygonaceae	Dock Family	
<i>Rumex acetosa</i>	Common Sorrel	Karlovassi
<i>Rumex bucephalophorus</i>	Horned Dock	Ydoussa
<i>Rumex pulcher</i>	Fiddle Dock	Karlovassi
<i>Rumex thyrsiflorus</i>	a Dock	Potami
Primulaceae	Primrose family	
<i>Anagallis arvensis</i> subsp. <i>arvensis</i>	Scarlet Pimpernel	Karlovassi
<i>Anagallis arvensis</i> subsp. <i>foemina</i>	Blue Pimpernel	Karlovassi
<i>Cyclamen hederifolium</i>	Ivy-leaved Sowbread	Ydoussa
<i>Cyclamen repandum</i> (leaves)	Spring Sowbread	Potami
Ranunculaceae	Buttercup Family	
<i>Anemone blanda</i>	-	Ambelos mountains
<i>Anemone pavonina</i>	Peacock Anemone	West of Potami
<i>Clematis cirrhosa</i>	Maiden's Bower	Ydoussa
<i>Ranunculus acris</i>	Meadow Buttercup	Ydoussa
<i>Ranunculus arvensis</i>	Corn Buttercup	Fields near Triadas Monastery
<i>Ranunculus ficaria</i>	Lesser Celandine	West of Potami
<i>Ranunculus sardous</i>	Hairy Buttercup	Psili Amos

Scientific name	Common name	Location
<i>Ranunculus parviflorus</i>	Small-flowered Buttercup	Potami
<i>Ranunculus sardous</i>	Hairy Buttercup	Karlovassi
Resedaceae	Mignonette Family	
<i>Reseda alba</i>	White Mignonette	Karlovassi
Rhamnaceae	Buckthorn Family	
<i>Rhamnus alaternus</i>	Mediterranean Buckthorn	Potami
Roseaceae	Rose Family	
<i>Prunus dulcis</i>	Almond	North of Pyrgos
<i>Sanguisorba minor</i>	Salad Burnet	Ambelos mountains
<i>Sanguisorba verrucosa</i>	a Salad Burnet	West of Pyrgos
<i>Sarcopoterium spinosum</i>	Spiny Burnet	Roadside East of Karlovassi
Rubiaceae	Bedstraw Family	
<i>Cruciata laevipes</i>	Crosswort	Ambelos mountains
<i>Rubia peregrina</i>	Wild Madder	West of Potami
<i>Rubia tinctorum</i>	Madder	Karlovassi
<i>Sherardia arvensis</i>	Field Madder	West of Potami
<i>Valantia hispida</i>	-	West of Potami
Rutaceae	Rue Family	
<i>Citrus limon</i>	Lemon	Planted
Saxifragaceae	Saxifrage Family	
<i>Saxifraga granulata</i>	Meadow Saxifrage	Potami
<i>Saxifraga tridactylites</i>	Rue-leaved Saxifrage	Karlovassi
<i>Saxifraga hederacea</i>	-	South of Kastania
Scrophulariaceae	Figwort Family	
<i>Antirrhinum majus</i>	Common Snapdragon	Naturalised on walls
<i>Bellardia trixago</i>	Bellardia	Potami
<i>Cymbalaria muralis</i>	Ivy-leaved Toadflax	Karlovassi
<i>Misopates orontium</i>	Weasel's Snout	Karlovassi
<i>Parentucellia latifolia</i>	Southern Red Bartsia	Psili Amos
<i>Parentucellia viscosa</i>	Yellow Bartsia	Psili amos
<i>Scrophularia heterophylla</i>	-	Potami
<i>Verbascum olympicum</i>	-	Karlovassi
<i>Verbascum sinuatum</i>	a Mullein	North of Pyrgos
<i>Veronica cymbalaria</i>	White Speedwell	Potami
Solanaceae	Nightshade Family	
<i>Mandragora officinalis</i>	Mandrake	Triadas Monastery
<i>Solanum nigrum</i>	Black Nightshade	West of Potami
Styracaceae	Storax Family	
<i>Styrax officinalis</i>	Storax	Ydoussa
Urticaceae	Nettle Family	
<i>Parietaria diffusa</i>	a Pellitory of the Wall	Karlovassi
<i>Parietaria cretica</i>	Pellitory-of-the-wall	Potami

Scientific name	Common name	Location
<i>Parietaria officinalis</i>	Large Pellitory-of-the-wall	Potami
<i>Urtica membranacea</i>	Membranous Nettle	Karlovassi
<i>Urtica pilulifera</i>	Roman Nettle	Potami
Valerianaceae	Valerian Family	
<i>Centranthus calcitrapa</i>	Small Valerian	West of Potami
<i>Centranthus ruber</i>	Red Valerian	Potami
<i>Valeriana officinalis</i>	Common Valerian	Ambelos mountains
Vitaceae	Grape-vine Gamily	
<i>Vitis vinifera</i>	<i>Grape-vine</i>	Karlovassi
Zygophyllaceae	Caltrop Family	
<i>Tribulus terrestris</i>	Maltese Cross	Ydoussa
Liliidae (Monocotyledons)		
Agavaceae	Century Plant Family	
<i>Agave americana</i>	Century Plant	Planted
Araceae	Arum Family	
<i>Arisarum vulgare (leaves)</i>	Friar's Cowl	West of Potami
<i>Arum discordis (leaves)</i>	-	Psili Amos
<i>Arum italicum subsp. italicum</i>	Italian Lords and Ladies	West of Potami
<i>Dracunculus vulgaris</i>	Dragon Arum	Ydoussa
Dioscoreaceae	Yam Family	
<i>Tamus communis</i>	Black Bindweed	South of Kastania
Iridaceae	Iris Family	
<i>Gladiolus italicus</i>	Field Gladiolus	Fields near Triadas Monastery
<i>Iris attica</i>	-	Ambelos mountains
<i>Moraea sisyrinchium</i>	Barbary Nut	Triadas Monastery
Juncaceae	Rush Family	
<i>Juncus acutus</i>	Sharp Rush	Psili Amos
<i>Juncus bufonius</i>	Toad Rush	Mykili
<i>Juncus maritimus</i>	Sea Rush	Mykili
<i>Schoenus nigricans</i>	Black Bog Rush	Mykili
<i>Scirpoides holoschoenus</i>	Round-headed Clubrush	West of Potami
Liliaceae	Lily Family	
<i>Allium neapolitanum</i>	Naples Garlic	Fields near Triadas Monastery
<i>Allium nigrum</i>	-	Fields near Triadas Monastery
<i>Allium roseum</i>	Rosy Garlic	Mykili
<i>Allium subhirsutum</i>	-	Potami
<i>Asparagus acutifolius</i>	Prickly Asparagus	Karlovassi
<i>Bellevalia trifoliata</i>	-	Triadas Monastery
<i>Fritillaria conica</i>	-	Ambelos mountains
<i>Gagea graeca</i>	-	Ambelos mountains
<i>Muscari comosum</i>	Tassel Hyacinth	Potami
<i>Muscari neglectum</i>	Grape Hyacinth	Ambelos mountains

Scientific name	Common name	Location
<i>Ornithogalum narbonense</i>	-	Fields near Triadas Monastery
<i>Pancratium maritimum</i>	Sea Daffodil	Potami
<i>Ruscus aculeatus</i>	Butcher's Broom	Potami
<i>Smilax aspera</i>	Sarsaparilla Plant	Potami
<i>Urginea maritima</i>	Sea Squill (leaves only)	Potami
Orchidaceae	Orchid Family	
<i>Anacamptis pyramidalis</i>	Pyramidal Orchid	North of Limnionas
<i>Dactylorhiza romana</i>	Roman Orchid	Ambelos mountains
<i>Himantoglossum robertianum (over)</i>	Giant Orchid	North of Pyrgos
<i>Limnorchis abortivum</i>	Violet Bird's-nest Orchid	Ydoussa
<i>Ophrys apifera subsp. apifera</i>	Bee Orchid	Mykili
<i>Ophrys bombyliflora</i>	Bumblebee Orchid	Mykili
<i>Ophrys episcopalidis</i>	Large-flowered Bee Orchid	Potami
<i>Ophrys fusca</i>	Sombre Bee Orchid	North of Pyrgos
<i>Ophrys heldreichii</i>	Heldreich's Ophrys	Roadside East of Karlovassi
<i>Ophrys mammosa</i>	An early Spider Orchid	Ydoussa
<i>Ophrys oestrifera</i>	a Woodcock Orchid	Potami
<i>Ophrys reinholdii</i>	Reinhold's Bee Orchid	South of Kastania
<i>Ophrys sicula</i>	Yellow Bee Orchid	North of Marathokambos
<i>Orchis anatolica</i>	Anatolian Orchid	North of Pyrgos
<i>Orchis fragrans</i>	Bug Orchid	North of Limnionas
<i>Orchis italica</i>	Naked Man Orchid	North of Hora
<i>Orchis morio</i>	Green-winged Orchid	North of Pyrgos
<i>Orchis sancta</i>	Holy Orchid	North of Limnionas
<i>Serapias orientalis</i>	a Tongue Orchid	Psili Amos
<i>Serapias parviflora</i>	Small-flowered Tongue Orchid	Psili Amos
<i>Serapias vomeracea</i>	Ploughshare Tongue Orchid	North of Pyrgos
Poaceae	Grass Family	
<i>Aegilops comosa</i>	Aegilops	West of Pyrgos
<i>Anisantha diandra</i>	Great Brome	East of Karlovassi
<i>Anisantha rigida</i>	Stiff Brome	Psili Amos
<i>Anisantha sterilis</i>	Barren Brome	Karlovassi
<i>Anisantha tectorum</i>	Drooping Brome	North of Pyrgos
<i>Arundo donax</i>	Giant Reed	Karlovassi
<i>Avena barbata</i>	Bristle Oat	Potami
<i>Avena sterilis</i>	Winter Wild Oat	Mykili
<i>Brachypodium pinnatum</i>	Tor-grass	Ambelos mountains
<i>Briza maxima</i>	Great Quaking Grass	Potami
<i>Briza minor</i>	Annual Quaking Grass	Mykili
<i>Bromus rubens</i>	Red Brome	Potami
<i>Catapodium maritimum</i>	Sea Fern-grass	Potami
<i>Catapodium rigidum</i>	Fern-grass	karlovassi
<i>Cynodon dactylon</i>	Bermuda Grass	Psili Amos
<i>Hordeum murinum</i>	Wall Barley	East of Karlovassi
<i>Hyparrhenia hirta</i>	-	Potami
<i>Imperata cylindrica</i>	-	Mykili
<i>Lagurus ovatus</i>	Hare's-tail Grass	Potami
<i>Lolium perenne</i>	Italian Rye Grass	Common
<i>Phragmites australis</i>	Common Reed	Mykili
<i>Poa annua</i>	Annual Meadow-grass	Karlovassi

Scientific name**Common name****Location***Rostraria cristata*

-

Potami

Stipa capensis

Feather Grass

Potami

Posidoniaceae**Posidonia Family***Posidonia oceanica*

Posidonia

Psili Amos

Birds (H = heard only; A = Athens ; LO = Leader Only)

	Common name	Scientific name	April						
			23	24	25	26	27	28	29
1	Chukar Partridge	<i>Alectoris chukar</i>		✓				✓	✓
2	Common Quail	<i>Coturnix coturnix</i>		✓					
3	Ruddy Shelduck	<i>Tadorna ferruginea</i>			✓				✓
4	Scopoli's Shearwater	<i>Calonectris diomedea diomedea</i>	✓		✓	✓			
5	Yelkouan Shearwater	<i>Puffinus yelkouan</i>	✓			✓		✓	
6	Greater Flamingo	<i>Phoenicopterus roseus</i>			✓				
7	Little Bittern	<i>Ixobrychus minutus</i>							✓
8	Black-crowned Night Heron	<i>Nycticorax nycticorax</i>							✓
9	Squacco Heron	<i>Ardeola ralloides</i>	✓	✓	✓	✓	✓	✓	✓
10	Grey Heron	<i>Ardea cinerea</i>	✓						
11	Purple Heron	<i>Ardea purpurea</i>			✓				
12	Little Egret	<i>Egretta garzetta</i>	✓		✓	✓	✓	✓	
13	Great Cormorant	<i>Phalacrocorax carbo</i>				✓			
14	Short-toed Snake Eagle	<i>Circaetus gallicus</i>	✓	✓		✓	✓	✓	
15	Montagu's Harrier	<i>Circus pygargus</i>							A
16	Eurasian Sparrowhawk	<i>Accipiter nisus</i>					✓		✓
17	Common Buzzard	<i>Buteo buteo</i>				✓		✓	✓
18	Long-legged Buzzard	<i>Buteo rufinus</i>		✓		✓	✓		✓
19	Bonelli's Eagle	<i>Aquila fasciata</i>							✓
20	Common Kestrel	<i>Falco tinnunculus</i>	✓	✓					
21	Red Footed Falcon	<i>Falco vespertinus</i>			✓			✓	✓
22	Eleonora's Falcon	<i>Falco eleonora</i>		✓			✓		✓
23	Common Moorhen	<i>Gallinula chloropus</i>			✓				
24	Eurasian Coot	<i>Fulica atra</i>			✓				
25	Black-winged Stilt	<i>Himantopus ostralegus</i>			✓				
26	Spur-winged Lapwing	<i>Vanellus spinosus</i>		✓	✓	✓			
27	Little Ringed Plover	<i>Charadrius dubius</i>							✓
28	Green Sandpiper	<i>Tringa ochropus</i>							✓
29	Wood Sandpiper	<i>Tringa glareola</i>		✓	✓	✓	✓	✓	
30	Common Sandpiper	<i>Actitis hypoleucos</i>	✓	✓	✓	✓		✓	✓
31	Ruff	<i>Philomachus pugnax</i>		✓		✓			
32	Audouin's Gull	<i>Ichthyaeetus audouinii</i>	✓						
33	Yellow-legged Gull	<i>Larus michahellis</i>	✓	✓	✓	✓	✓	✓	✓
34	White-winged Tern	<i>Chlidonias leucopterus</i>			✓				
35	Common Pigeon	<i>Columba livia 'feral'</i>	✓	✓	✓	✓	✓	✓	✓
36	Common Woodpigeon	<i>Columba palumbus</i>		✓	✓				
37	European Turtle Dove	<i>Streptopelia turtur</i>				✓	✓		
38	Eurasian Collared Dove	<i>Streptopelia decaocto</i>	✓	✓	✓	✓	✓	✓	✓
39	Common Cuckoo	<i>Cuculus canorus</i>				H		H	H
40	Tawny Owl	<i>Strix aluco</i>			H		✓	H	

	Common name	Scientific name	April							
			23	24	25	26	27	28	29	30
41	Little Owl	<i>Athene noctua</i>			✓		✓			✓
42	Alpine Swift	<i>Apus melba</i>	✓						✓	✓
43	Common Swift	<i>Apus apus</i>	✓	✓	✓	✓	✓	✓	✓	✓
44	Pallid Swift	<i>Apus pallidus</i>	✓	✓	✓	✓	✓	✓	✓	
45	European Bee Eater	<i>Merops apiaster</i>	✓	✓		H		✓	✓	✓
46	Eurasian Hoopoe	<i>Upupa epops</i>					✓			
47	Eurasian Wryneck	<i>Jynx torquilla</i>		✓						
48	Lesser Grey Shrike	<i>Lanius minor</i>		✓						
49	Woodchat Shrike	<i>Lanius senator</i>	✓	✓	✓	✓	✓	✓	✓	✓
50	Masked Shrike	<i>Lanius nubicus</i>	✓	✓					✓	
51	Eurasian Golden Oriole	<i>Oriolus oriolus</i>		✓		✓			✓	
52	'Black-capped' Eurasian Jay	<i>Garrulus glandarius samios</i>	✓	✓	✓	✓	✓	✓	✓	✓
53	Eurasian Magpie	<i>Pica pica</i>								A
54	Western Jackdaw	<i>Corvus monedula</i>					✓			
55	Hooded Crow	<i>Corvus corone cornix</i>	✓	✓	✓	✓	✓		✓	✓
56	Northern Raven	<i>Corvus corax</i>						✓	✓	
57	Great Tit	<i>Parus major</i>	✓	✓	✓	✓	✓	✓	✓	H
58	Eurasian Blue Tit	<i>Cyanistes caeruleus</i>		✓	✓	H	✓	✓	H	
59	Greater Short-toed Lark	<i>Calandrella brachydactyla</i>			✓					
60	Crested Lark	<i>Galerida cristata</i>			✓		✓			✓
61	Sand Martin	<i>Riparia riparia</i>			✓	✓	✓	✓	✓	✓
62	Barn Swallow	<i>Hirundo rustica</i>	✓	✓	✓	✓	✓	✓	✓	✓
63	Common House Martin	<i>Delichon urbica</i>	✓	✓	✓	✓	✓	✓	✓	✓
64	Red-rumped Swallow	<i>Cecropis daurica</i>	✓	✓	✓	✓	✓	✓	✓	✓
65	Cetti's Warbler	<i>Cettia cetti</i>	H							
66	Willow Warbler	<i>Phylloscopus trochilus</i>						✓	✓	
67	Wood Warbler	<i>Phylloscopus sibilatrix</i>						✓	✓	
68	Great Reed Warbler	<i>Acrocephalus arundinaceus</i>							✓	
69	Sedge Warbler	<i>Acrocephalus schoenobaenus</i>							✓	
70	Eurasian Reed Warbler	<i>Acrocephalus scirpaceus</i>			H				✓	✓
71	Eastern Olivaceous Warbler	<i>Iduna pallida</i>		✓	✓	✓	✓	✓	✓	✓
72	Olive Tree Warbler	<i>Hippolais olivetorum</i>							✓	
73	Zitting Cisticola	<i>Cisticola juncidis</i>	H		✓					
74	Eurasian Blackcap	<i>Sylvia atricapilla</i>			✓				✓	
75	Barred Warbler	<i>Sylvia atricapilla</i>		✓	✓				✓	
76	Lesser Whitethroat	<i>Sylvia curruca</i>		✓						
77	Common Whitethroat	<i>Sylvia communis</i>		✓	✓	✓	✓	✓	✓	✓
78	Eastern Subalpine Warbler	<i>Sylvia cantillans albistriata</i>		✓				H		
79	Sardinian Warbler	<i>Sylvia melanocephala</i>		✓	✓	✓		✓	✓	✓
80	Ruppell's Warbler	<i>Sylvia rueppelli</i>		✓						
81	Goldcrest	<i>Regulus regulus</i>						H		
82	Eurasian Wren	<i>Troglodytes troglodytes</i>		H	✓	H				
83	Common Starling	<i>Sternus vulgaris</i>	✓	✓						
84	Common Blackbird	<i>Turdus merula</i>	✓	✓	✓	✓	✓	✓	✓	✓
85	Mistle Thrush	<i>Turdus viscivorus</i>	✓	✓						
86	European Robin	<i>Erithacus rubecula</i>							H	
87	Common Nightingale	<i>Luscinia megarhynchos</i>	H	✓	H			H	H	
88	Common Redstart	<i>Phoenicurus phoenicurus</i>					LO			
89	Whinchat	<i>Saxicola rubetra</i>	✓	✓	✓	✓	✓	✓	✓	✓
90	Northern Wheatear	<i>Oenanthe oenanthe</i>		✓	✓					

	Common name	Scientific name	April							
			23	24	25	26	27	28	29	30
91	Eastern Black-eared Wheatear	<i>Oenanthe melanoleuca</i>		✓	✓		✓			
92	Spotted Flycatcher	<i>Muscicapa striata</i>					✓	✓	✓	✓
93	European Pied Flycatcher	<i>Ficedula hypoleuca</i>		✓	✓	✓	✓	✓	✓	✓
94	House Sparrow	<i>Passer domesticus</i>	✓	✓	✓	✓	✓	✓	✓	✓
95	Spanish Sparrow	<i>Passer hispaniolensis</i>	✓	✓	✓	✓	✓	✓	✓	✓
96	Yellow (Blue-headed) Wagtail	<i>Motacilla flava flava</i>	✓	✓	✓	✓	✓	✓	✓	✓
97	Yellow (Black-headed) Wagtail	<i>Motacilla flava feldegg</i>		✓	✓					✓
98	Yellow (Grey-headed) Wagtail	<i>Motacilla flava thunbergi</i>			✓					✓
99	White Wagtail	<i>Motacilla alba</i>	✓	✓	✓	✓	✓	✓	✓	✓
100	Tawny Pipit	<i>Anthus campestris</i>			✓					
101	Meadow Pipit	<i>Anthus pratensis</i>		✓	✓			✓	✓	✓
102	Tree Pipit	<i>Anthus trivialis</i>				✓		✓	✓	
103	Red-throated Pipit	<i>Anthus cervinus</i>			✓					
104	Common Chaffinch	<i>Fringilla coelebs</i>	✓	✓		✓	✓	✓	✓	✓
105	European Serin	<i>Serinus serinus</i>	✓	✓	✓	✓	✓	✓	✓	✓
106	European Greenfinch	<i>Carduelis chloris</i>				✓				✓
107	European Goldfinch	<i>Carduelis carduelis</i>			✓	✓				
108	Common Linnet	<i>Carduelis cannabina</i>	H							
109	Red Crossbill	<i>Loxia curvirostra</i>		✓						
110	Corn Bunting	<i>Miliaria calandra</i>			✓		✓			
111	Cretzschmar's Bunting	<i>Emberiza caesia</i>		✓			✓			
112	Black-headed Bunting	<i>Emberiza bruniceps</i>								✓

NB. This species list follows the names, taxonomy and species order of the International Ornithological Congress (version 2.9 , July 2011)

Butterflies (C = Caterpillar)

	Common name	Scientific name	April							
			23	24	25	26	27	28	29	30
	Hesperiidae									
1	Lulworth Skipper	Thymelicus acteon			✓					
2	Papilionidae									
3	Eastern Festoon	Zerynthia cerisy	✓	✓		✓				✓
4	Scarce Swallowtail	Iphiclydes podalirius	✓		✓	✓				
5	Swallowtail	Papilion machaon			✓	✓			✓	✓
6	Pieridae									
7	Large White	Pieris brassicae	✓	✓	✓	✓			✓	✓
8	Small White	Pieris rapae				✓	✓		✓	✓
9	Southern Small White	Pieris mannii			✓					
10	Eastern Bath White	Pontia edusa			✓					
11	Orange-tip	Anthocharis cardamines	✓			✓			✓	
12	Eastern Dappled White	Euchloe ausonia	✓			✓			✓	
13	Clouded Yellow	Colias crocea			✓	✓			✓	✓
14	Lycaenidae									
15	Green Hairstreak	Callophrys rubi			✓					
16	Small Copper	Lycaena phlaeas			✓	✓				
17	Holly Blue	Celastrina argiolus	✓			✓			✓	
18	Green-underside Blue	Glaucopsyche alexis	✓				✓			
19	Common Blue	Polyommatus icarus	✓	✓	✓	✓	✓		✓	
20	Brown Argus	Aricia agrestis			✓	✓	✓			
21	Nymphallidae									

	Common name	Scientific name	April							
			23	24	25	26	27	28	29	30
22	Red Admiral	<i>Vanessa atalanta</i>		✓		✓				
23	Painted Lady	<i>Vanessa cardui</i>	✓	✓		✓			✓	
24	Lesser Spotted Fritillary	<i>Melitaea trivia</i>					C			
25	Satyrinae									
26	Speckled Wood	<i>Pararge aegeria aegeria</i>				✓			✓	
27	Large Wall Brown	<i>Lasiommata maera</i>		✓						
28	Aegean Meadow Brown	<i>Maniola telmessia</i>			✓	✓	✓	✓	✓	✓
29	Samos Grayling	<i>Hipparchia mersina</i>							✓	
30	Balkan Grayling	<i>Hipparchia senthes</i>							✓	

Moths (B = Bivouac & C = Caterpillar)

	Common name	Scientific name	April							
			23	24	25	26	27	28	29	30
1	Plume Moth	<i>Pterophoridae sp.</i>				✓				
2	Giant Peacock Moth	<i>Saturnia pyri</i>						✓		
3	c.f. Least Carpet	<i>Idaea rusticata</i>								✓
4	c.f. Provencal Carpet	<i>Xanthorhoe oxybiata</i>						✓	✓	
5	Yellow Belle	<i>Semiaspilates ochrearia</i>		✓	✓	✓			✓	
6	Hummingbird Hawkmoth	<i>Macroglossum stellatarum</i>		✓	✓				✓	
7	Pine Processionary	<i>Thaumetopoea pityocampa</i>	B	B	B	B	B	B	B	B
8	Cream-spot Tiger	<i>Arctia villica</i>			✓	✓				
9	Mullein	<i>Shargacucullia verbasci</i>					C			
10	Bordered Straw	<i>Heliothis peltigera</i>			✓	✓			✓	

Other Invertebrates (N = Nymph)

	Common name	Scientific name	April							
			23	24	25	26	27	28	29	30
1	Common Bluet	<i>Enallagma cyathigerum</i>				✓				
2	c.f. Lesser Emperor	<i>Anax parthenope</i>								✓
3	Red-veined Darter	<i>Sympetrum fonscolombii</i>								✓
4	Grasshopper sp.	<i>Caliptamus</i> sp.			N					
5	Egyptian Grasshopper	<i>Anacridium aegyptium</i>		✓	✓					
6	Great Green Bush Cricket	<i>Tettigonia viridissima</i>	N	N						
7	White-faced Bush Cricket	<i>Decticus albifrons</i>							✓	
8	Bush Cricket sp.	<i>Pholidoptera</i> sp.			N					
9	Mantis	<i>Empusa fasciata</i>							N	
10	European Termite	<i>Kaloterms flavicollis</i>		✓						
11	Shield Bug	<i>Eurydema</i> sp.				✓				
12	Green Shield Bug	<i>Palomena prasina</i>		✓						
13	Southern Green Shield Bug	<i>Nezara viridula</i>								✓
14	Fire Bug	<i>Pyrrhocoris apterus</i>				✓				
15	Gendarme Bug	<i>Lygaeus</i> sp.			✓	✓				
16	Assassin Bug	<i>Reduviidae</i> sp							✓	
17	Froghopper	<i>Cercopis vulnerata</i>				✓	✓		✓	
18	Lacewing	<i>Phaeostigma</i> sp.						✓		
19	St. Mark's Fly	<i>Bibio marci</i>				✓				
20	Beefly	<i>Bombylius</i> sp.	✓	✓		✓				
21	Robber Fly	<i>Asilidae</i> sp.							✓	
22	Ruby-tail Wasp	<i>Chrysis ignita</i>		✓						

	Common name	Scientific name	April							
			23	24	25	26	27	28	29	30
23	Velvet Ant	<i>Mutilla europaea</i>		✓						
24	Bee-killer	<i>Philanthus triangulum</i>					✓			
25	Carpenter Bee	<i>Xylocopa</i> sp.	✓			✓			✓	
26	Buff-tailed Bumblebee	<i>Bombus terrestris</i>		✓						
27	Honey Bee	<i>Apis mellifera</i>	✓	✓	✓	✓		✓	✓	
28	Violet Ground Beetle	<i>Carabus auratus</i>					✓			
29	Chafer	<i>Oxythyrea funesta</i>		✓	✓				✓	
30	Glow-worm	<i>Lampyris noctiluca</i>			✓					
31	Malachite Beetle	<i>Malachius bipustulatus</i>							✓	
32	7-Spot Ladybird	<i>Coccinella 7-punctata</i>			✓	N				
33	10 Spot Ladybird	<i>Adalia 10-punctata</i>					✓			
34	Lily Beetle	<i>Lilioceris lili</i>		✓						
35	Leaf Beetle (Green)	<i>Chrysomelidae</i> sp.		✓	✓				✓	
36	Leaf Beetle (Matt Black)	<i>Chrysomelidae</i> sp.					✓			
37	Giant Centipede	<i>Scolopendra cingulatus</i>							✓	
39	Flat-backed Millipede	<i>Polydesmus</i> sp.			✓			✓	✓	
40	Millipede sp	<i>Tachypodoiulus niger</i>								
41	Pill Woodlouse	<i>Glomeris marginata</i>		✓	✓	✓	✓		✓	
42	Sheep Tick	<i>Ixodes ricinus</i>							✓	
43	Harvestman (Black)	<i>Opiliones</i> sp.							✓	
44	Trapdoor Spider	<i>Cteniza</i> sp.				✓				
45	Jumping Spider	<i>Philaeus chrysops</i>			✓				✓	

Reptiles & Amphibians (LO = Leader Only)

	Common name	Scientific name	April							
			23	24	25	26	27	28	29	30
1	Common Tree Frog	<i>Hyla arborea</i>					H			
2	Levant's Water Frog	<i>Pelophylax bedriagae</i>	H	H		H	H		H	
3	Spur-thighed Tortoise	<i>Testudo graeca</i>				✓				
4	Starred Agama	<i>Laudakia stellio</i>	✓	✓		✓				✓
5	Anatolian Rock Lizard	<i>Anatoloacerta anatolica</i>				✓			✓	
6	Balkan Green Lizard	<i>Lacerta trilineata</i>				✓			✓	
7	Snake-eyed Skink	<i>Ablepharus kitaibelii</i>				✓				
8	Dahl's Whip Snake	<i>Platyceps najadam</i>							L O	

Mammals

	Common name	Scientific name	April							
			23	24	25	26	27	28	29	30
1	Eastern Hedgehog	<i>Erinaceus concolor</i>				✓				
2	Lesser Horseshoe Bat	<i>Rhinolophus hipposideros</i>			?					
3	Nathusius's Pipistrelle	<i>Pipistrellus nathusii</i>				✓				
4	Golden Jackal	<i>Canis aureus</i>							✓	
5	Beech Marten	<i>Martes foina</i>		✓						
6	Wood Mouse	<i>Apodemus sylvaticus</i>						✓		

Molluscs

	Common name	Scientific name	April							
			23	24	25	26	27	28	29	30
1	Door Snail	<i>Clausiliidae sp.</i>					✓			
2	Brown-lipped Banded Snail	<i>Cepaea nemoralis</i>				✓				
3	Garden Snail	<i>Cornu aspersum</i>				✓				
4	Roman Snail	<i>Helix pomatia</i>	✓							